

Find Your Space.

180 Sheree Boulevard
Exton, PA 19341

12,376 SQ. FT.
Available for Lease



Property Highlights



AMENITIES

Nearby shopping, restaurants, hotels, daycare facilities & Marsh Creek State Park.



TRANSPORTATION

Easy Access to the PA Turnpike and Routes 100, 113, & 401.



TAXES

Located in tax-friendly Uwchlan Township and the Chester County Keystone Innovation Zone.



TECHNOLOGY

Comcast & Verizon available in the building.



SUSTAINABILITY

Landlord will collaborate with tenant should they desire LEED certification for space improvements. Landlord also offers single-stream recycling and provides e-waste recycling twice a year.



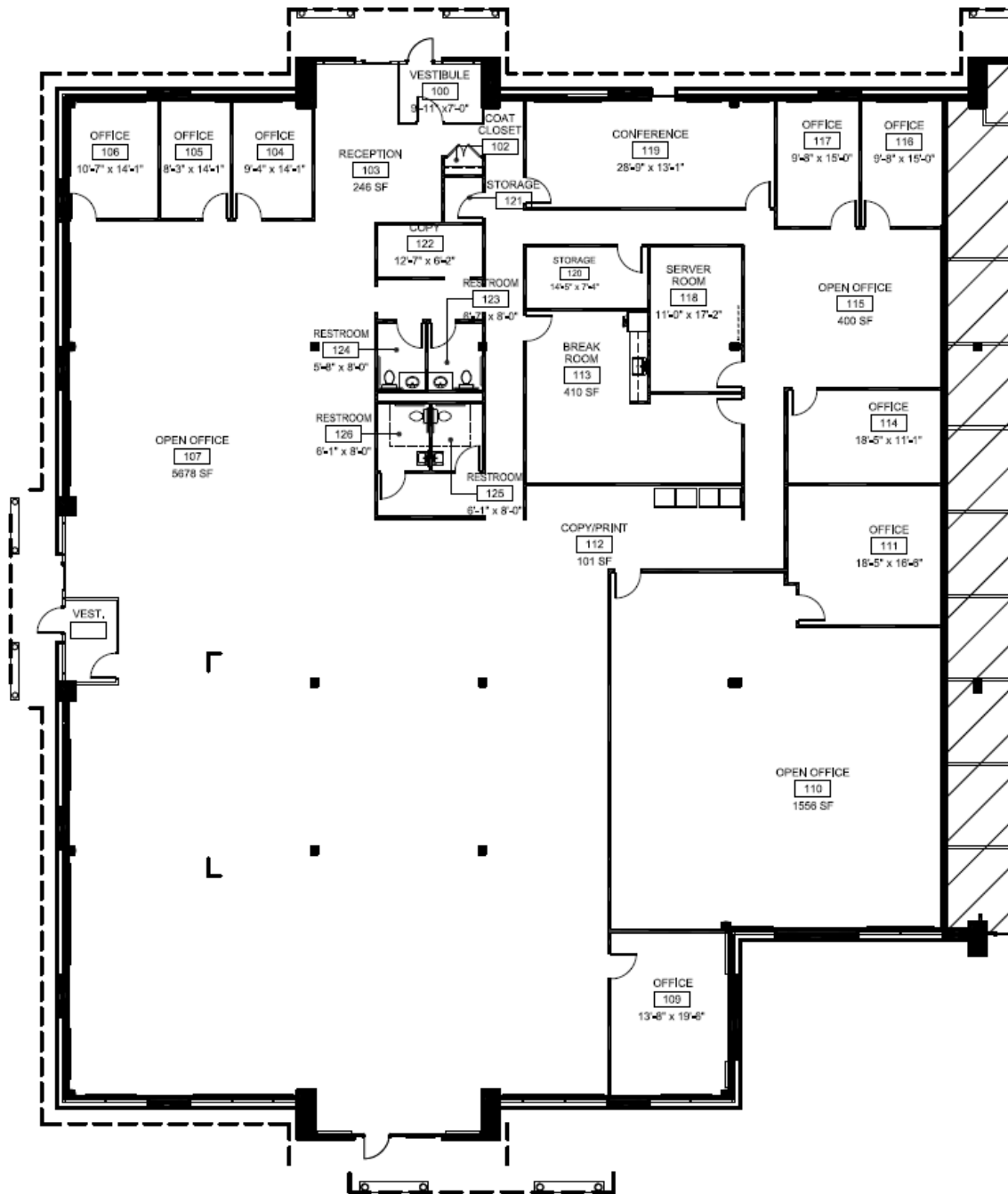
WORKSPACE PROPERTY TRUST (WSPT®)

Workspace Property Trust is a privately held, vertically integrated, full-service commercial real estate company specializing in the ownership, management, leasing, and development of Office, and Industrial / R&D / Flex (IRDF) spaces. Workspace owns and operates approximately 18 million square feet across over 200 properties in sought-after markets, including 13 of the top 20 US metropolitan areas.

Our Space Works.

180 Sheree Boulevard | 12,376 SF | Exton, PA

FOR LEASE



- Generous Window Line
- Prominent, Direct Suite Entrance
- Private Outside Seating & Collaboration Opportunities
- Exterior Signage Opportunities
- Individualized HVAC & Electric
- In-Suite, Private Restrooms
- Recent Exterior Façade Upgrades
- Ample Parking

**LEASING
INFORMATION**

5 Great Valley Parkway
Suite 209
Malvern, PA 19355
www.workspaceproperty.com

DIRECTOR OF LEASING
Catherine Bianco
O 484.320.3708
C 484-429.4899
cbianco@workspaceproperty.com

FOLLOW US ON



@workspacepropertytrust

180 Sheree Boulevard | 12,376 SF | Exton, PA

FOR LEASE



- Within minutes to several eateries, hotels, gyms, and shopping centers.
- Less than a mile from the Turnpike Interchange.
- Management services provided by Workspace's Property Management Office, with dedicated personnel including Property Managers, Maintenance Technicians, & Tenant Services Coordinators.

LEASING INFORMATION

5 Great Valley Parkway
Suite 209
Malvern, PA 19355
www.workspaceproperty.com

DIRECTOR OF LEASING
Catherine Bianco
O 484.320.3708
C 484-429.4899
cbianco@workspaceproperty.com

FOLLOW US ON



@workspacepropertytrust