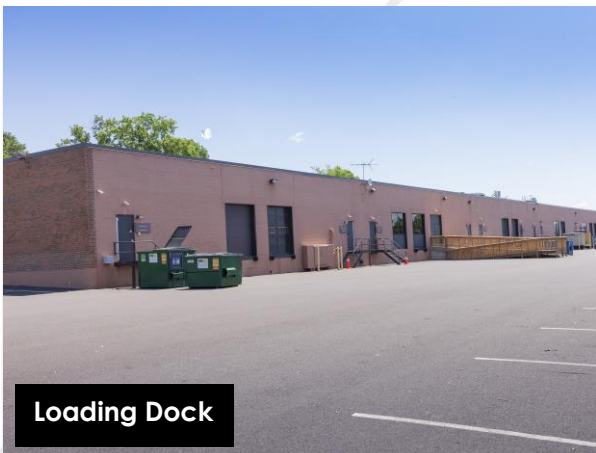


201-223 Witmer Road  
Suite 207  
Horsham, PA 19044

5,000 sf  
Available for Lease



Complimentary Tenant Events



Loading Dock

## Property Highlights



### PARK AMENITIES

Numerous shopping centers, hotels, dining options, banking, retail, daycare and fitness centers under a 5 minute drive. Plus, sports leagues, landlord-coordinated social and networking events.



### TRANSPORTATION

Proximate access to PA Turnpike, Routes 611 and 309, SEPTA Routes 80 & 310 with multiple stops throughout the Pennsylvania Business Campus.



### TAXES

No Business Privilege or Occupational Tax in Horsham Township.



### TECHNOLOGY

Comcast & Verizon available throughout.



### SUSTAINABILITY

Landlord will collaborate with tenant should they desire LEED certification for space improvements.



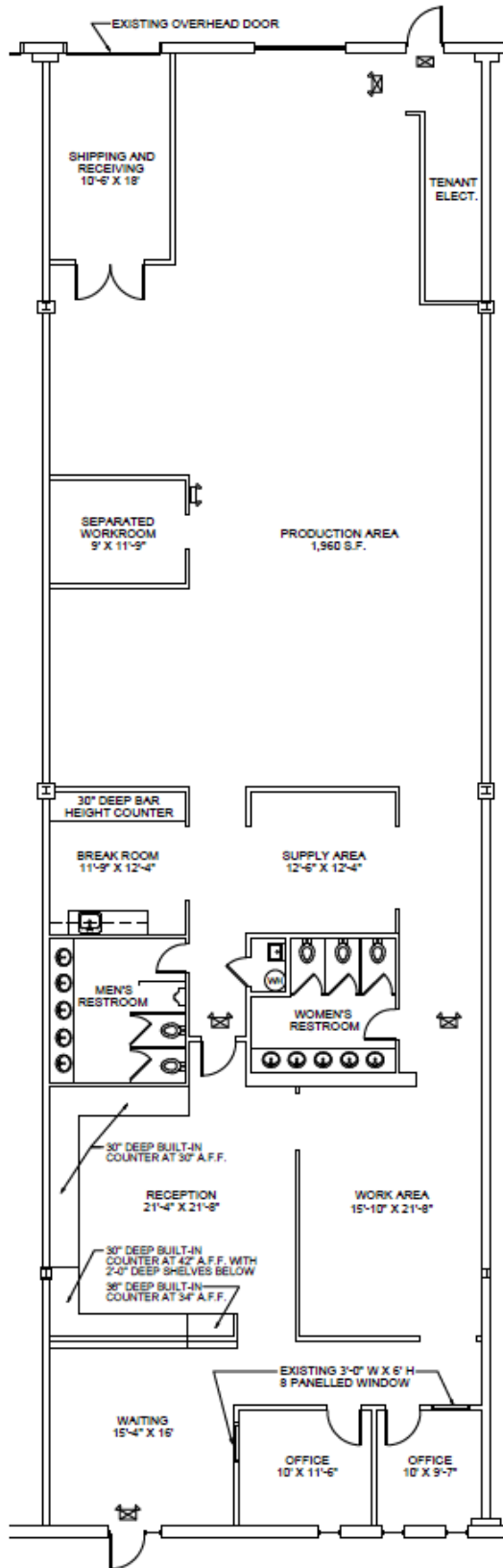
### WORKSPACE PROPERTY TRUST (WSPT)

WSPT is a privately held, vertically integrated, full-service commercial real estate company specializing in the ownership, management, leasing, and development of Office, and Industrial R D le (IRD) spaces. Workspace owns and operates approximately 1 million square feet across over 200 properties in sought-after markets, including 13 of the top 20 US metropolitan areas.

Our Space Works.

201-223 Witmer Road, Suite 207 | Horsham, PA 19044

FOR LEASE



- Single-story Industrial / R&D/ Flex (IRDF) building
- Dock loading
- Prominent visibility on Witmer Road
- Ample parking

**LEASING  
INFORMATION**

700 Dresher Road  
Suite 150  
Horsham, PA 19044  
www.workspaceproperty.com

FOLLOW US ON



@workspacepropertytrust