

Find Your Space.

240 Gibraltar Road
Suite 170
Horsham, PA 19044

3,392 sf
Available for Lease



Updated Lobby Finishes



On-Campus Fitness Center

Property Highlights



PARK AMENITIES

Numerous shopping centers, hotels, dining options, banking, retail, daycare and fitness centers under a 2-minute drive. Plus, sports leagues, landlord-coordinated social and networking events.



TRANSPORTATION

Proximate access to PA Turnpike, Routes 611 and 309, SEPTA Routes 80 & 310 with multiple stops throughout the Pennsylvania Business Campus.



TAXES

No Business Privilege or Occupational Tax in Horsham Township.



TECHNOLOGY

Comcast & Verizon available throughout the Pennsylvania Business Campus.



SUSTAINABILITY

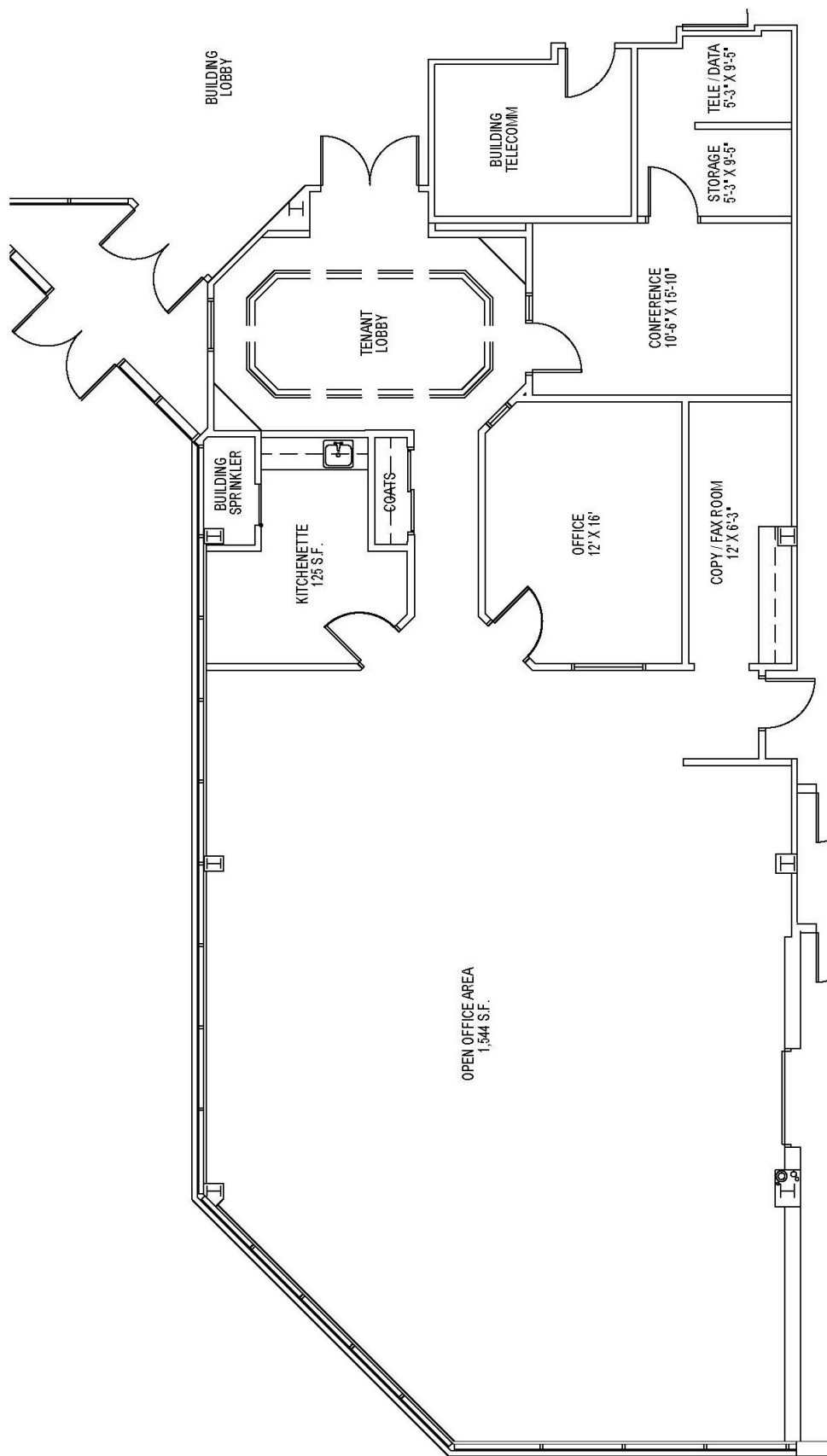
Landlord will collaborate with tenant should they desire LEED certification for space improvements.



WORKSPACE PROPERTY TRUST (WSPT®)

Workspace Property Trust locally owns, manages and leases 40 buildings consisting of over 2.3 million square feet of office and light industrial properties as a First-Class corporate campus.

Our Space Works.



- Updated lobby finishes and new furniture (2021)
- First floor space directly off the lobby
- Fitness center, deli café, and furnished outdoor patio next door
- Electric vehicle (EV) charging stations available
- 4/1,000 parking
- Over 1,000 newly developed apartments within 3-minute drive

LEASING INFORMATION

700 Dresher Road
Suite 150
Horsham, PA 19044
www.workspaceproperty.com

FOLLOW US ON



@workspacepropertytrust