

Find Your Space.

240 Gibraltar Road
Suite 150
Horsham, PA 19044

4,562 sf
Available for Lease



Updated Lobby Finishes



On-Site Fitness Center

Property Highlights



PARK AMENITIES

Numerous shopping centers, hotels, dining options, banking, retail, daycare and fitness centers under a 2-minute drive. Plus, sports leagues, landlord-coordinated social and networking events.



TRANSPORTATION

Proximate access to PA Turnpike, Routes 611 and 309, SEPTA Routes 80 & 310 with multiple stops throughout the Pennsylvania Business Campus.



TAXES

No Business Privilege or Occupational Tax in Horsham Township.



TECHNOLOGY

Comcast & Verizon available throughout the Pennsylvania Business Campus.



SUSTAINABILITY

Landlord will collaborate with tenant should they desire LEED certification for space improvements.

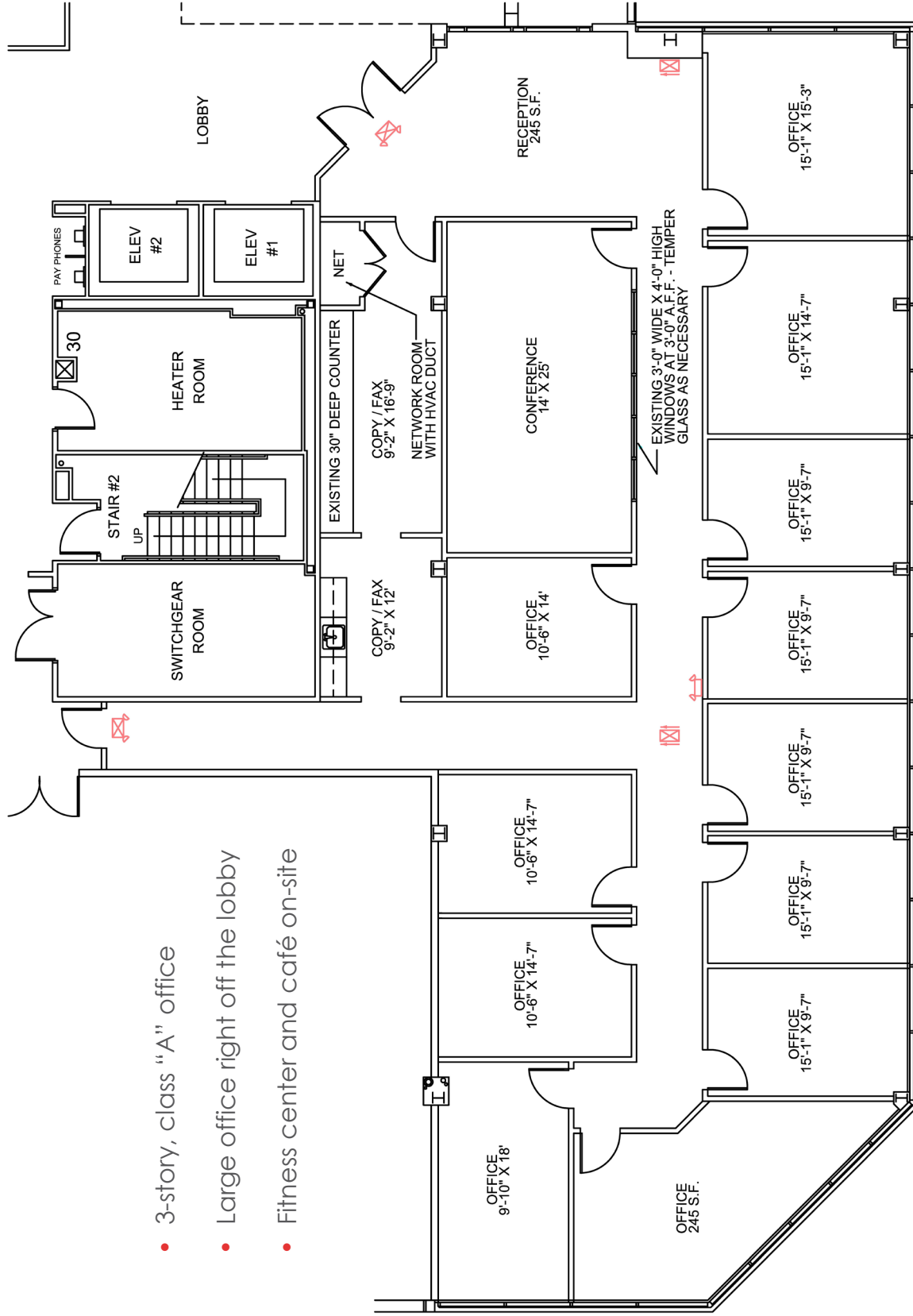


WORKSPACE PROPERTY TRUST (WSPT®)

Workspace Property Trust locally owns, manages and leases 40 buildings consisting of over 2.3 million square feet of office and light industrial properties as a First-Class corporate campus.

Our Space Works.

- 3-story, class "A" office
- Large office right off the lobby
- Fitness center and café on-site



LEASING INFORMATION

700 Dresher Road
Suite 150
Horsham, PA 19044
www.workspacepropertytrust.com

FOLLOW US ON



@workspacepropertytrust