

Find Your Space.

240 Gibraltar Road
Suite 260
Horsham, PA 19044

8,504 sf
Available for Lease



Updated Lobby Finishes



On-Campus Fitness Center

Property Highlights



PARK AMENITIES

Numerous shopping centers, hotels, dining options, banking, retail, daycare and fitness centers under a 2-minute drive. Plus, sports leagues, landlord-coordinated social and networking events.



TRANSPORTATION

Proximate access to PA Turnpike, Routes 611 and 309, SEPTA Routes 80 & 310 with multiple stops throughout the Pennsylvania Business Campus.



TAXES

No Business Privilege or Occupational Tax in Horsham Township.



TECHNOLOGY

Comcast & Verizon available throughout the Pennsylvania Business Campus.



SUSTAINABILITY

Landlord will collaborate with tenant should they desire LEED certification for space improvements.



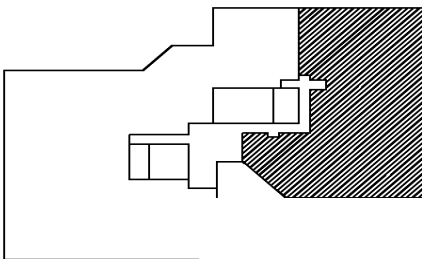
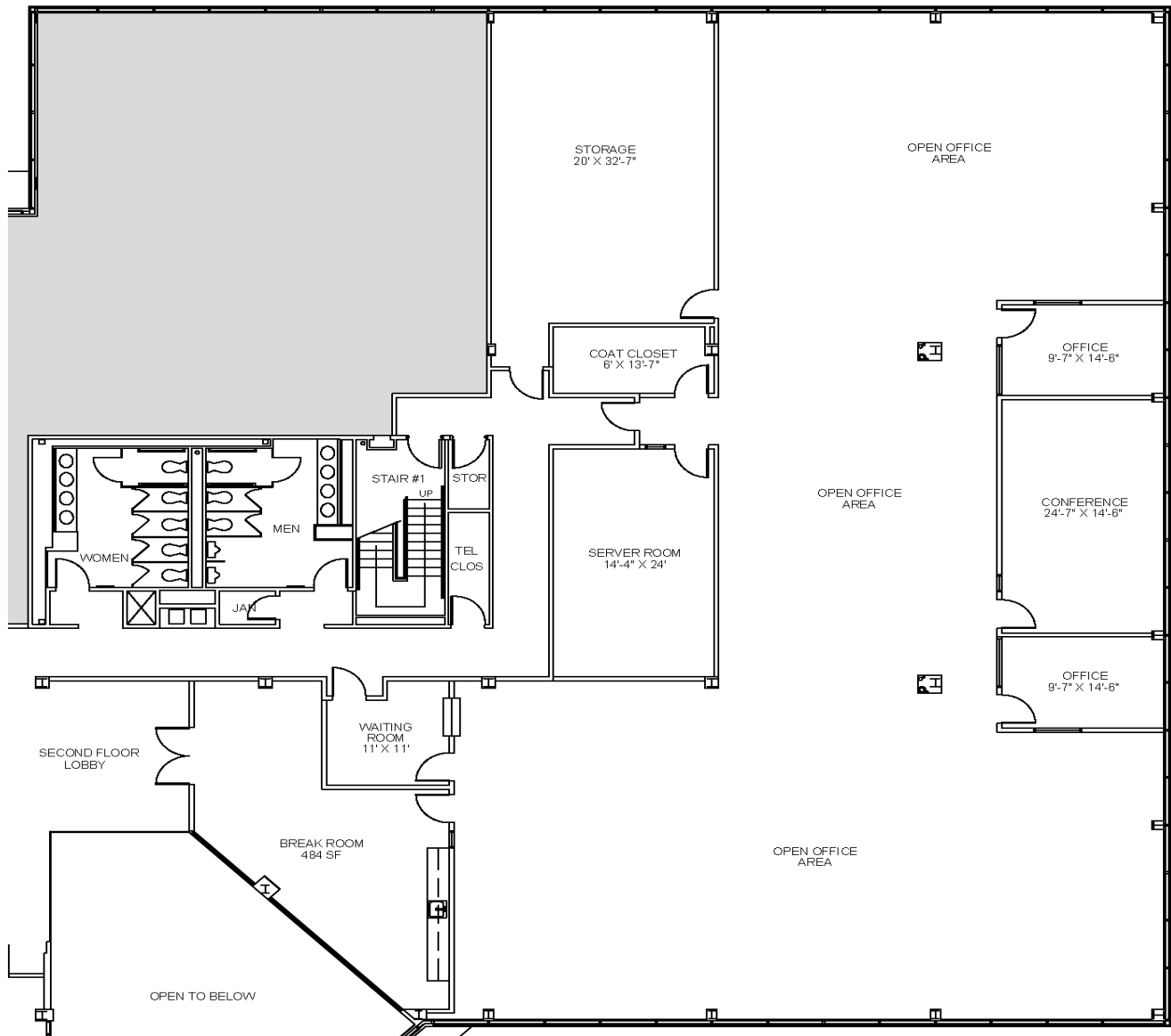
WORKSPACE PROPERTY TRUST (WSPT®)

Workspace Property Trust locally owns, manages and leases 40 buildings consisting of over 2.3 million square feet of office and light industrial properties as a First-Class corporate campus.

Our Space Works.

240 Gibraltar Road, Suite 260 | Horsham, PA 19044

FOR LEASE



- 2nd floor space available in renovated class "A" building
- Amenities include café, fitness center, showers and patio
- Ample natural light and atrium view
- Easy plug and play space

**LEASING
INFORMATION**

700 Dresher Road
Suite 150
Horsham, PA 19044
www.workspaceproperty.com

FOLLOW US ON



@workspacepropertytrust