

Find Your Space.

400-455 Lakeside Drive
Horsham, PA 19044

24,350-62,123 sf
Available for Lease

NEW ZONING!

Property Highlights



PARK AMENITIES

Numerous shopping centers, hotels, dining options, banking, retail, daycare and fitness centers under a 2-minute drive. Plus, sports leagues, landlord-coordinated social and networking events.



TRANSPORTATION

Proximate access to PA Turnpike, Routes 611 and 309, SEPTA Routes 80 & 310 with multiple stops throughout the Pennsylvania Business Campus.



TAXES

No Business Privilege or Occupational Tax in Horsham Township.



TECHNOLOGY

Comcast & Verizon available throughout.



SUSTAINABILITY

Landlord will collaborate with tenant should they desire LEED certification for space improvements.



WORKSPACE PROPERTY TRUST (WSPT®)

WSPT is a privately held, vertically integrated, full-service commercial real estate company specializing in the ownership, management, leasing, and development of Office, and Industrial / R&D / Flex (IRDF) spaces. Workspace owns and operates approximately 18 million square feet across over 200 properties in sought-after markets, including 13 of the top 20 US metropolitan areas.

Private & Open-Office Options

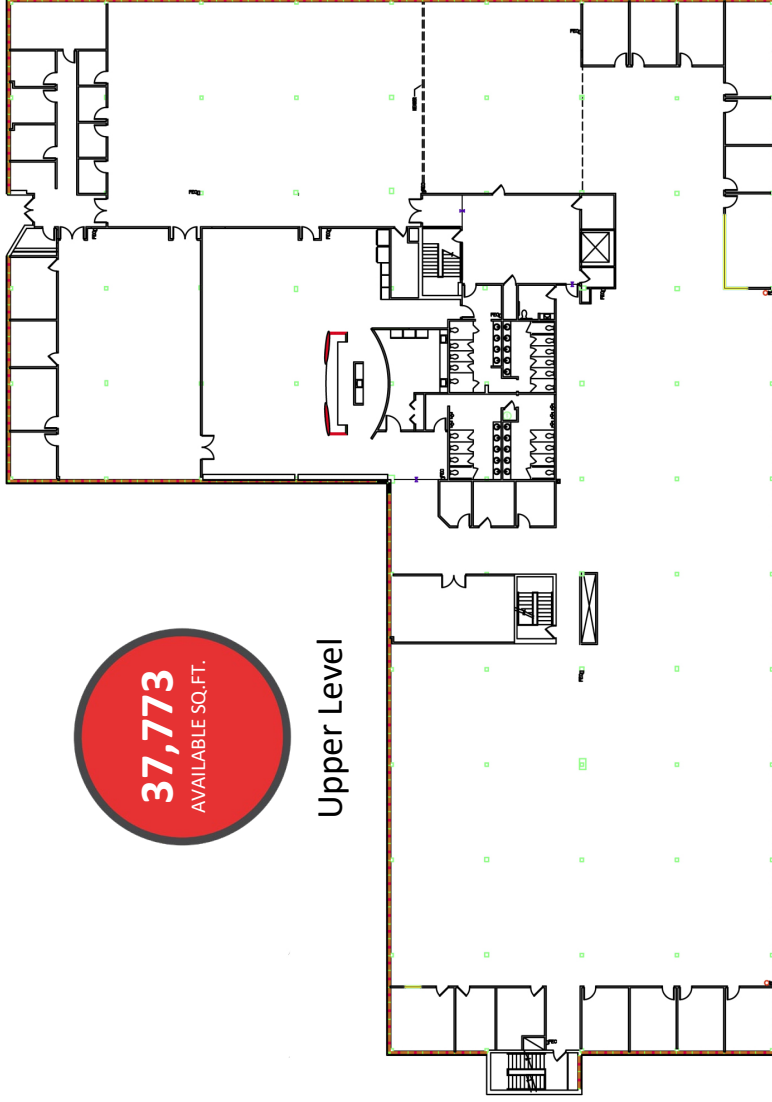
First Floor Lobby

Our Space Works.

- Zoned for inpatient rehab use
- Ample parking
- Cafeteria with seating for 60
- 9 ft. ceilings
- 1,200 AMP, 3 phase electric service
- 750 KW backup generator

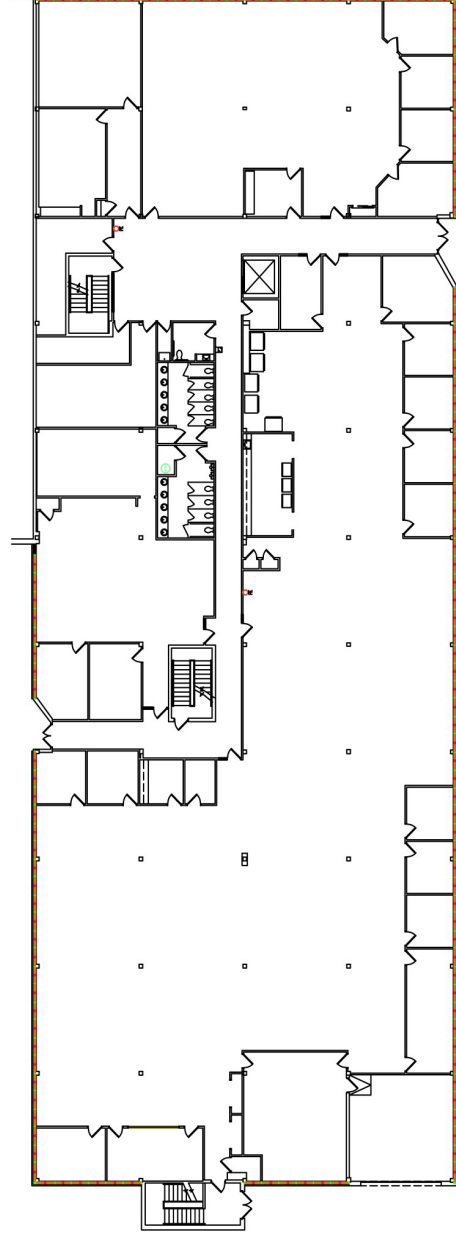
37,773
AVAILABLE SQ.FT.

Upper Level



24,350
AVAILABLE SQ.FT.

Lower Level



LEASING INFORMATION

700 Dresher Road
Suite 150
Horsham, PA 19044
www.workspaceproperty.com

FOLLOW US ON



@workspacepropertytrust