

Find Your Space.

6625 W. 78th Street
Bloomington, MN 55439

57,329 SQ. FT.
Available for Lease

Property Highlights



PARK AMENITIES

Full-service cafe, Lakeside walking trails, a beautifully appointed lobby with casual meeting areas, workout room with private showers, 50-person Training room.



TRANSPORTATION

Metro Transit bus service. Easy access to I-494 and Highways 169 and 100.



TAXES

2023 Estimated Tax & CAM - \$14.37/sq. ft.
Tax \$4.78 | \$9.59 CAM



TECHNOLOGY

Comcast telecommunications and Fiber



SUSTAINABILITY

Landlord will collaborate with tenant should tenant desire LEED certification for tenant improvements.



WORKSPACE PROPERTY TRUST (WSPT®)

Workspace Property Trust is a privately held, vertically integrated, full-service commercial real estate company specializing in the ownership, management, leasing, and development of Office, and Industrial / R&D / Flex (IRDF) spaces. Workspace owns and operates approximately 18 million square feet across over 200 properties in sought-after markets, including 13 of the top 20 US metropolitan areas.



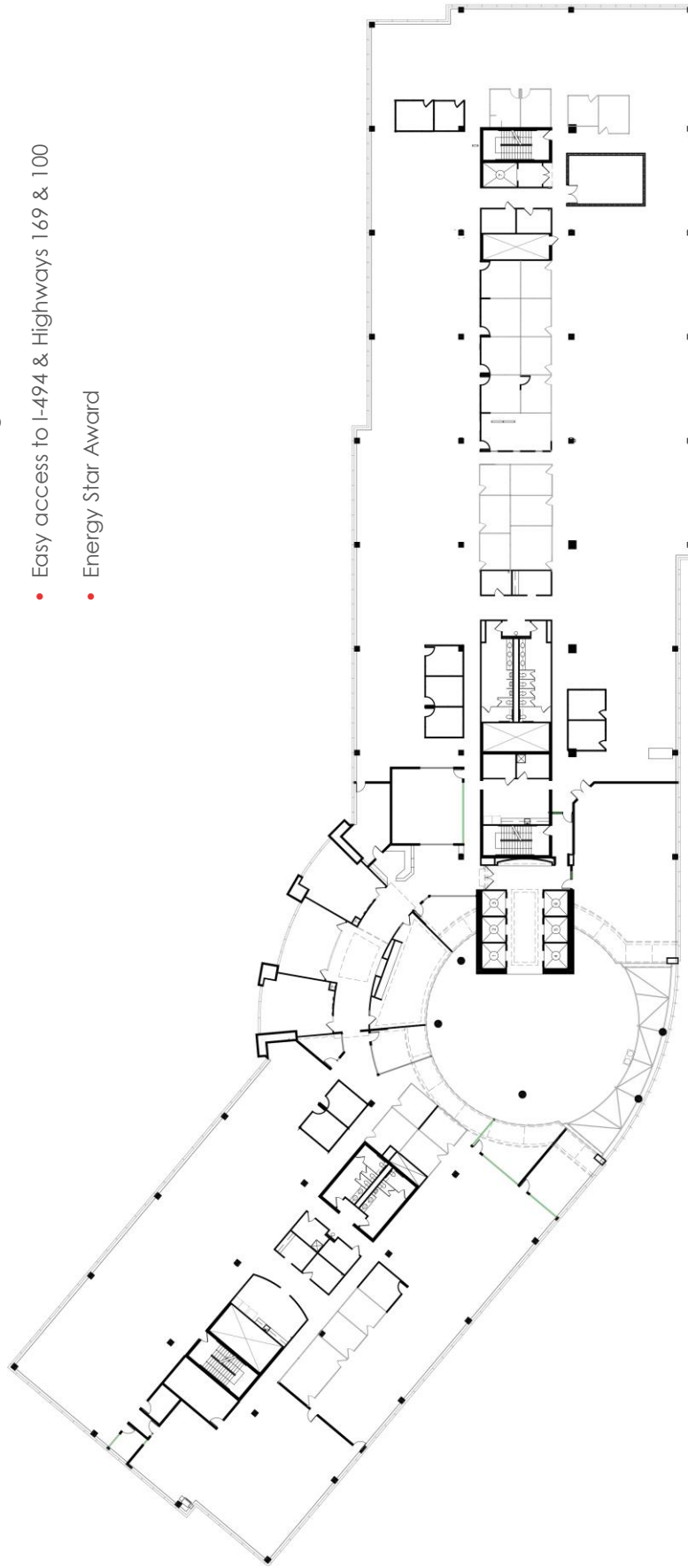
Comfortable Lobby Atrium



Fitness Center with Private Showers

Our Space Works.

- Full service cafeteria
- Workout facility with private shower rooms
- 50 person training/conference room
- Casual meeting areas with wifi
- Easy access to I-494 & Highways 169 & 100
- Energy Star Award



1 FLOOR PLAN
1 SUITE 300: 57,329 SFR



LEASING INFORMATION

6625 W. 78th St.
Suite 140
Bloomington, MN 55439
www.workspaceproperty.com

VICE PRESIDENT, REGIONAL DIRECTOR
Brad Butler
O 612.426.4033
C 952.292.4952
bbutler@workspaceproperty.com

FOLLOW US ON



@workspacepropertytrust