

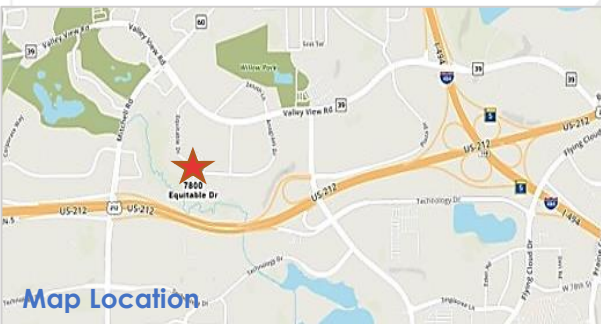
# Find Your Space.

**7800 Equitable**  
Eden Prairie, MN 55344

**7,436 SQ. FT.**  
Available for Lease



Two Story Lobby



Map Location



Tenant Appreciation Events

## Property Highlights



### BUILDING AMENITIES

Located within the southwest suburb of Eden Prairie, this office building has a contemporary feel, excellent glass lines, lower level sitting area, and an exterior south-facing patio.



### TRANSPORTATION

Easy access to I-494 and Highway 212



### TAXES

2023 Estimated Tax & CAM – \$12.88/Sq. Ft.  
\$3.35 Tax | \$9.53 CAM



### TECHNOLOGY

Comcast telecommunications and fiber



### SUSTAINABILITY

Energy Star portfolio, numerous green initiatives. Landlord will collaborate with Tenant should Tenant desire LEED certification for Tenant improvements

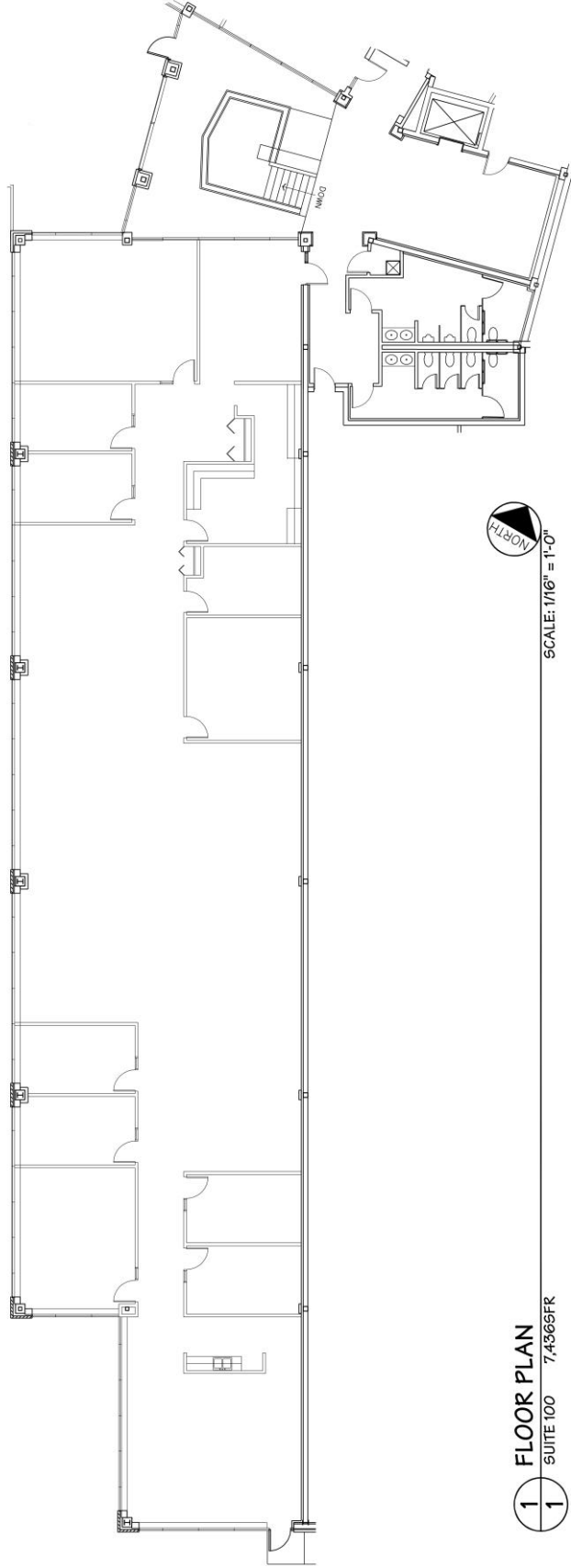
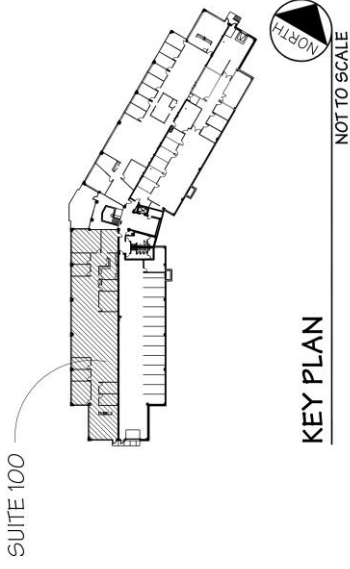


### WORKSPACE PROPERTY TRUST (WSPT®)

Workspace Property Trust is a privately held, vertically integrated, full-service commercial real estate company specializing in the ownership, management, leasing, and development of Office, and Industrial / R&D / Flex (IRDF) spaces. Workspace owns and operates approximately 18 million square feet across over 200 properties in sought-after markets, including 13 of the top 20 US metropolitan areas.

Our Space Works.

- 2 Story Class B Office Building
- Tempered indoor parking available
- Dock with shipping & receiving area
- Lower level seating and exterior patio
- Quiet natural setting



1 FLOOR PLAN  
1 SUITE 100 7,436SF

# LEASING INFORMATION

6625 W. 78th St.  
Suite 140  
Bloomington, MN 55439  
[www.workspaceproperty.com](http://www.workspaceproperty.com)

VICE PRESIDENT, REGIONAL DIRECTOR  
Brad Butler  
O 612.426.4033  
C 952.292.4952  
[bbutler@workspaceproperty.com](mailto:bbutler@workspaceproperty.com)

FOLLOW US ON



[@workspacepropertytrust](https://www.instagram.com/workspacepropertytrust)