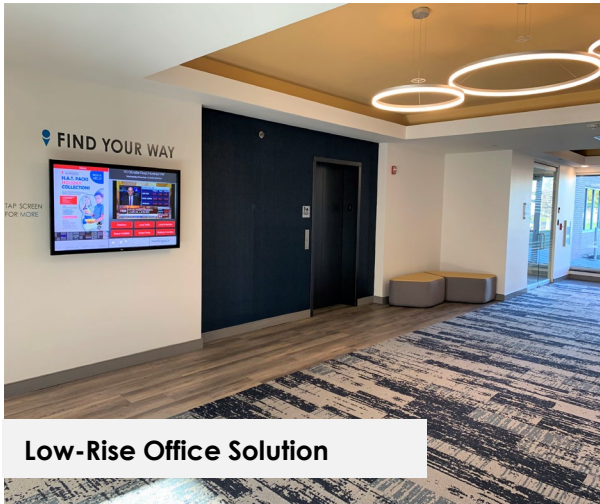


# Find Your Space.

**110 Gibraltar Road  
Suite 250**  
Horsham, PA 19044

**14,522 sf**  
Available for Lease



**Low-Rise Office Solution**



**Verdant & Walkable Corporate Setting**

## Property Highlights



### PARK AMENITIES

Numerous shopping centers, hotels, dining options, banking, retail, daycare and fitness centers under a 2-minute drive. Plus, sports leagues, landlord-coordinated social and networking events.



### TRANSPORTATION

Proximate access to PA Turnpike, Routes 611 and 309, SEPTA Routes 80 & 310 with multiple stops throughout the Pennsylvania Business Campus.



### TAXES

No Business Privilege or Occupational Tax in Horsham Township.



### TECHNOLOGY

Comcast & Verizon available throughout.



### SUSTAINABILITY

Landlord will collaborate with tenant should they desire LEED certification for space improvements.

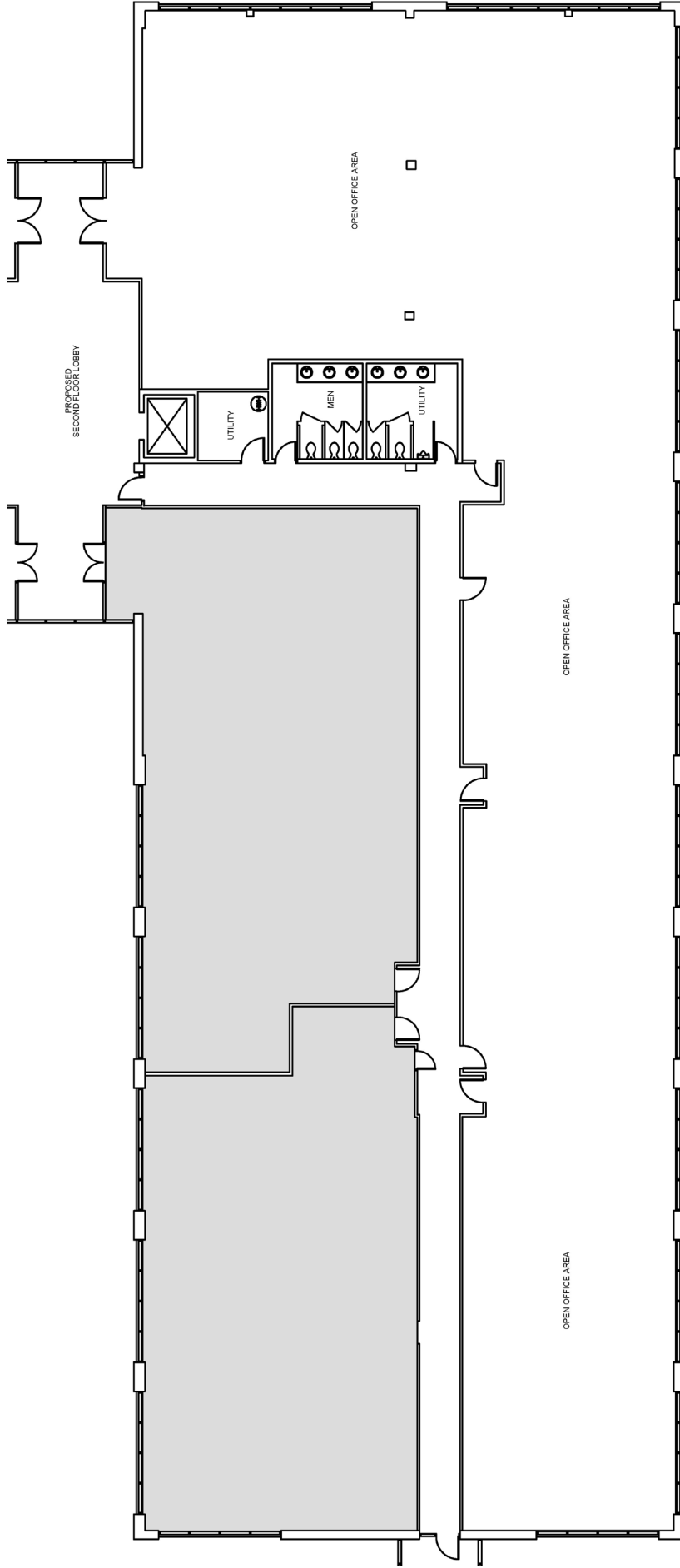


### WORKSPACE PROPERTY TRUST (WSPT®)

WSPT is a privately held, vertically integrated, full-service commercial real estate company specializing in the ownership, management, leasing, and development of Office, and Industrial / R&D / Flex (IRDF) spaces. Workspace owns and operates approximately 18 million square feet across over 200 properties in sought-after markets, including 13 of the top 20 US metropolitan areas.

**Our Space Works.**





- Renovated 1<sup>st</sup> and 2<sup>nd</sup> floor lobbies
- New windows throughout the building
- Walk next door to Wawa, PJ Whelihans, and CVS Pharmacy
- 0.8 miles to PA Turnpike interchange at Rt. 611
- Childcare center located across the street

## LEASING INFORMATION

700 Dresher Road  
Suite 150  
Horsham, PA 19044  
[www.workspaceproperty.com](http://www.workspaceproperty.com)

FOLLOW US ON



@workspacepropertytrust