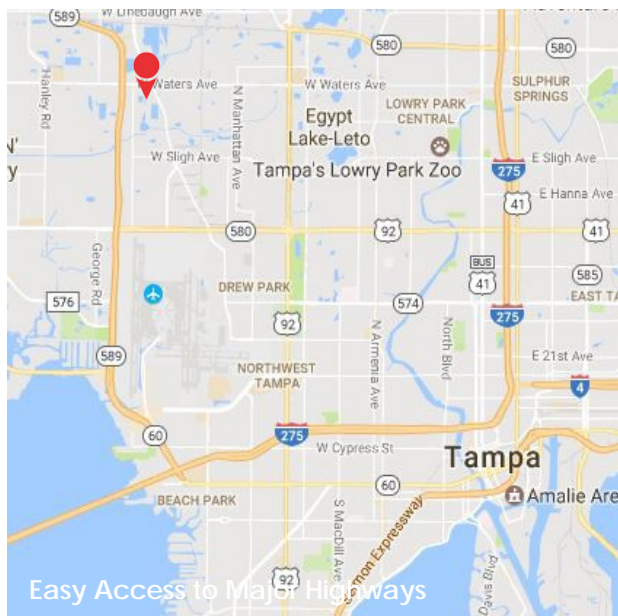


# Find Your Space.

8405-G Benjamin Rd  
Tampa, FL 33634

\$10/NNN | 4,396 SQ. FT.

4/1,000 Parking Ratio  
Available for Lease



## Property Highlights



### PARK AMENITIES

Property management office located on near by campus. Close proximity, and within walking distance, to numerous hotels, restaurants, mall and retail shops.



### TRANSPORTATION

Quick access to the Veterans Expressway, I-275 & Dale Mabry Highway. 10 minutes to Tampa Int'l Airport. HART stops in front of the business park.



### TECHNOLOGY

Spectrum and Fiber Net.



### SUSTAINABILITY

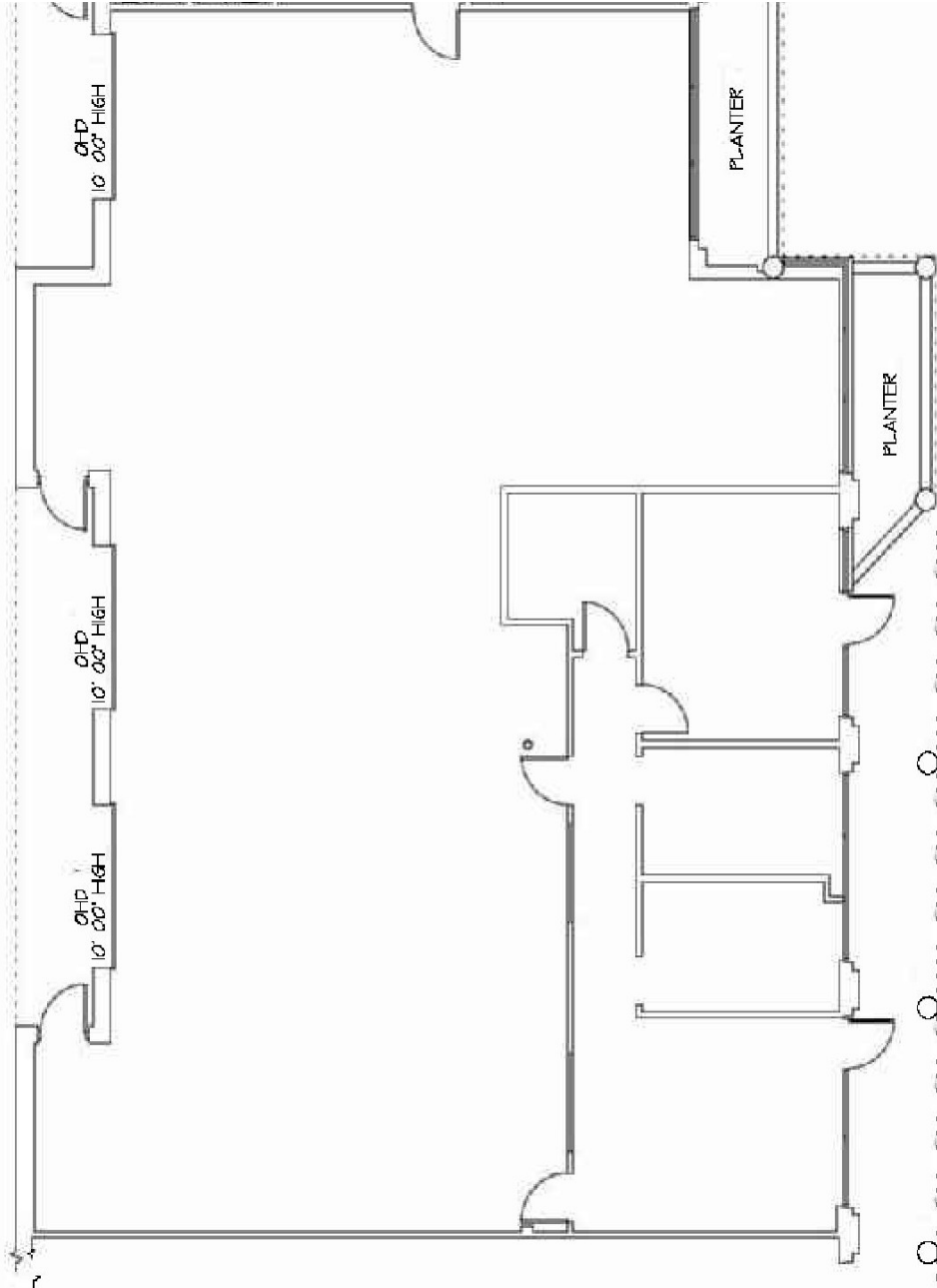
Recycling receptacles on-site.



### WORKSPACE PROPERTY TRUST (WSPT®)

Locally owns, manages, and leases 41 buildings consisting of 1.8 million square feet of office and light industrial properties in 5 business parks. The Tampa West Portfolio includes Woodland Corporate Center and Northport, while the Tampa East Portfolio includes Legacy Park, Silo Bend, and Crosspointe I and II.

Our Space Works.



- One -story flex/office building
- Office or air conditioned warehouse
- Grade level loading with 13' doors
- Tenant pays own electric and janitorial
- \$4.18/SF Estimated Operating Expenses

## LEASING INFORMATION

4631 Woodland Corporate Blvd.  
Suite 209  
Tampa, FL 33614  
[www.workspaceproperty.com](http://www.workspaceproperty.com)

VICE PRESIDENT, REGIONAL DIRECTOR  
Jeff Lanning  
O 813.889.3733  
C813.928.3142  
[jlanning@workspaceproperty.com](mailto:jlanning@workspaceproperty.com)

FOLLOW US ON



[@workspacepropertytrust](https://www.workspacepropertytrust.com)