

# Find Your Space.

Lakeview Plaza B  
13630 N.W 8<sup>th</sup> Street  
Suite 220  
Sunrise, FL 33325

**5,178 SQ. FT.**  
Available for Lease

Asking Rent: \$16.00/NNN  
2022 OPEX: \$9.24/RSF



Water Views



Tenant Appreciation Events

## Property Highlights



### AMENITIES

100% Tenant controlled with no shared spaces. Centrally located within "Sawgrass International Corporate Park". Featuring store front entrances with both individual and monument signage available, separately metered tenant-controlled electricity, zero loss factor, and roving security. Located in close proximity to the Sawgrass Mills Mall, numerous shopping centers, hotels, eateries, banking, and schools



### TRANSPORTATION

Easy access to Interstate 75, Sawgrass Expressway and Interstate 595



### TECHNOLOGY

AT&T, Comcast and FPL Fibernet

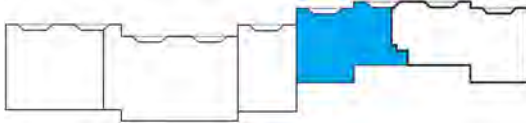


### WORKSPACE PROPERTY TRUST (WSPT®)

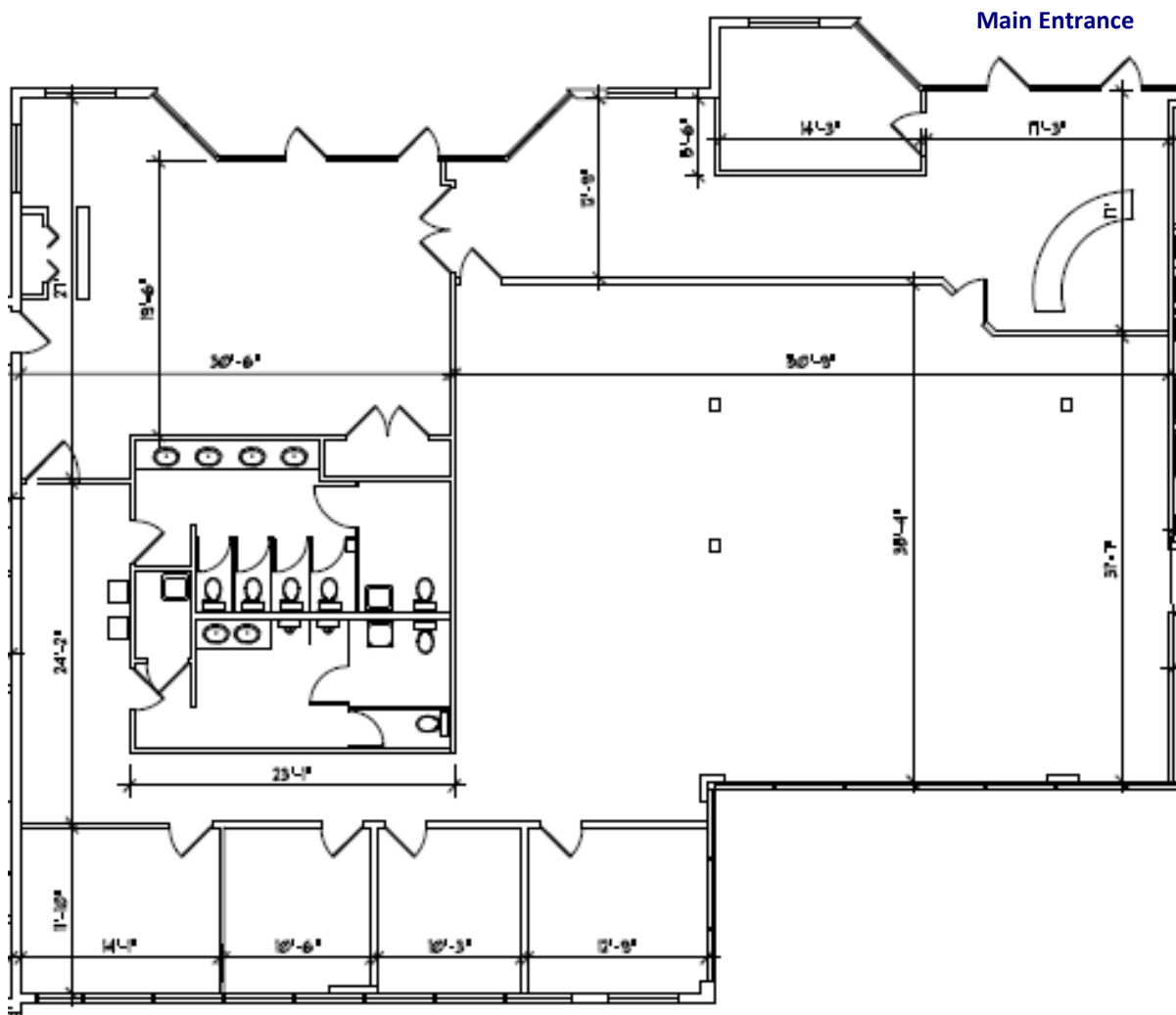
WSPT is a privately held, vertically integrated, full-service commercial real estate company specializing in the ownership, management, leasing, and development of Office, and Industrial / R&D / Flex (IRDF) spaces. Workspace owns and operates approximately 18 million sf across over 200 properties in sought-after markets, including 13 of the top 20 US metropolitan areas.

Our Space Works.

13630 N.W 8<sup>th</sup> Street, Sunrise, FL 33027



### Suite 220



## LEASING INFORMATION

3350 S.W 148<sup>th</sup> Ave  
Suite 124  
Miramar, FL 33027  
[www.workspaceproperty.com](http://www.workspaceproperty.com)

Director of Leasing  
Mike Nathanson  
O 954.391.5526  
C 954.695.5636

[mnathanson@workspaceproperty.com](mailto:mnathanson@workspaceproperty.com)

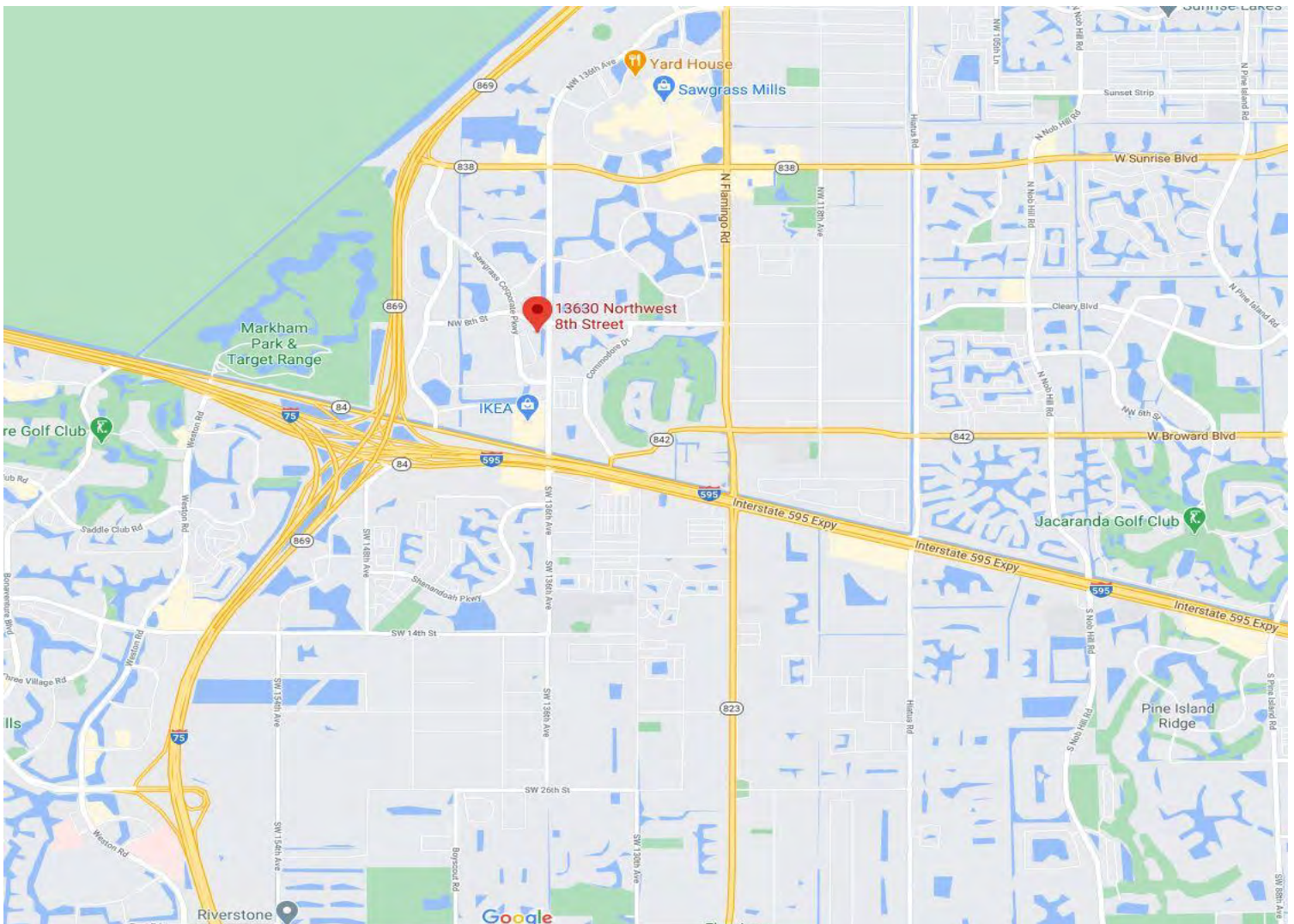
FOLLOW US ON



@workspacepropertytrust



13630 N.W. 8<sup>th</sup> Street, Sunrise, FL 33323



## LEASING INFORMATION

3350 S.W. 148<sup>th</sup> Ave  
Suite 124  
Miramar, FL 33027  
[www.workspaceproperty.com](http://www.workspaceproperty.com)

Director of Leasing  
Mike Nathanson  
O 954.391.5526  
C 954.695.5636

[mnathanson@workspaceproperty.com](mailto:mnathanson@workspaceproperty.com)

FOLLOW US ON



@workspacepropertytrust