

Find Your Space.

100 Gibraltar Road
Horsham, PA 19044

2,800 sf
Available for Lease

Property Highlights



PARK AMENITIES

Numerous shopping centers, hotels, dining options, banking, retail, daycare and fitness centers under a 2-minute drive. Plus, sports leagues, landlord-coordinated social and networking events.



TRANSPORTATION

Proximate access to PA Turnpike, Routes 611 and 309, SEPTA Routes 80 & 310 with multiple stops throughout the Pennsylvania Business Campus.



TAXES

No Business Privilege or Occupational Tax in Horsham Township.



TECHNOLOGY

Comcast & Verizon available throughout.



SUSTAINABILITY

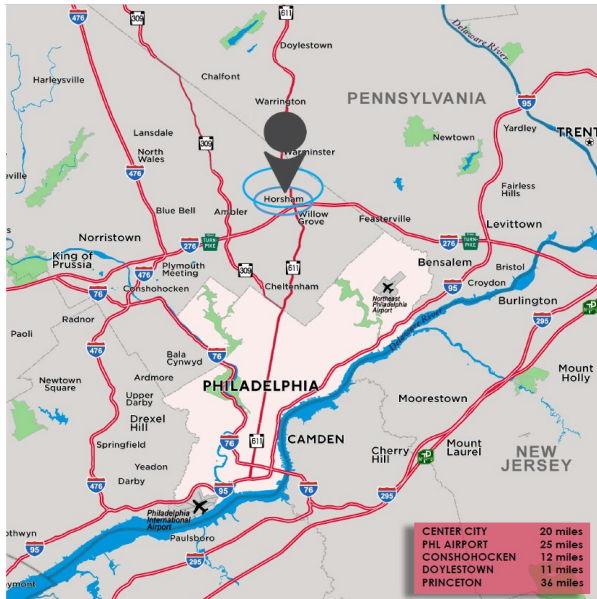
Landlord will collaborate with tenant should they desire LEED certification for space improvements.

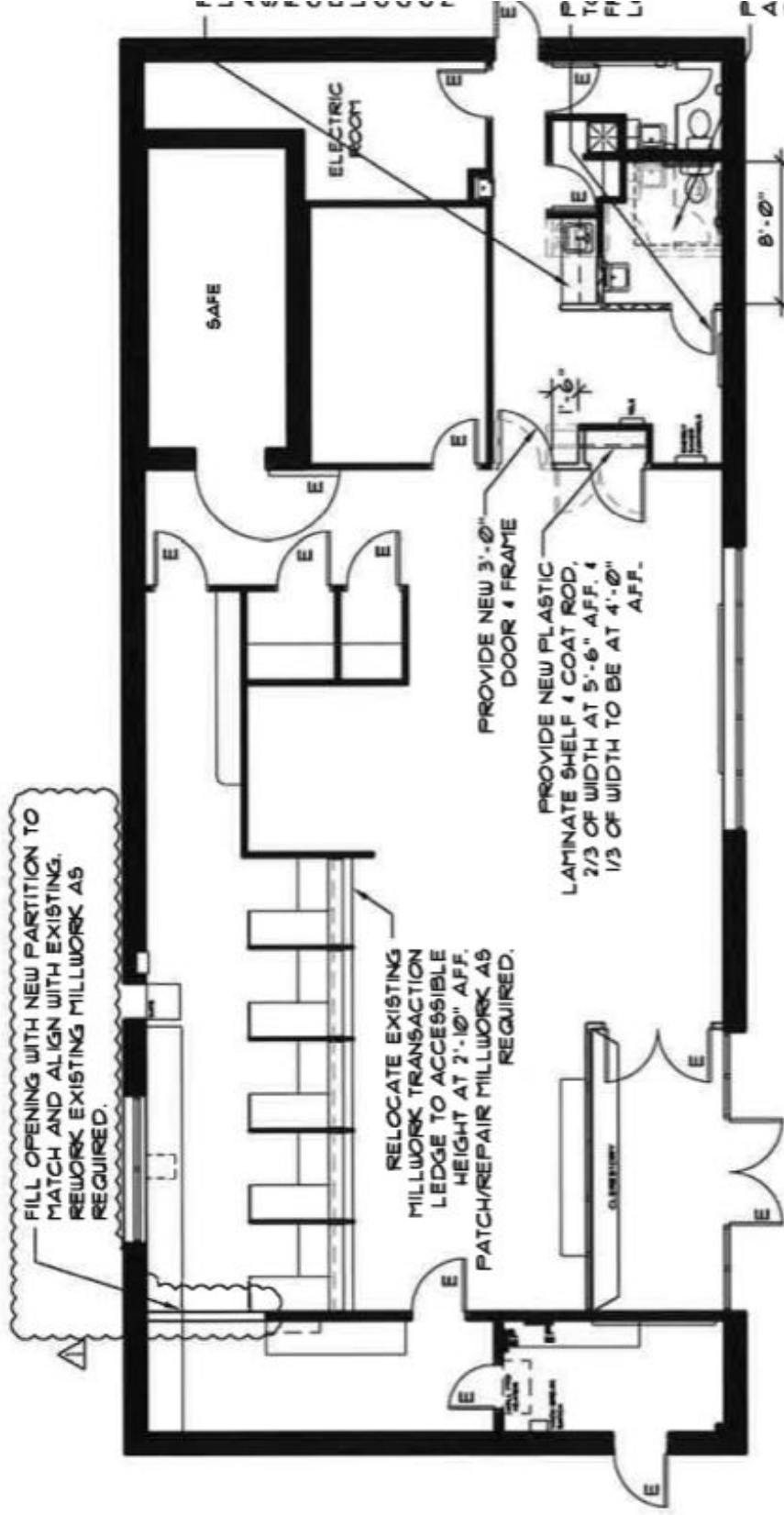


WORKSPACE PROPERTY TRUST (WSPT®)

WSPT is a privately held, vertically integrated, full-service commercial real estate company specializing in the ownership, management, leasing, and development of Office, and Industrial / R&D / Flex (IRDF) spaces. Workspace owns and operates approximately 18 million square feet across over 200 properties in sought-after markets, including 13 of the top 20 US metropolitan areas.

Our Space Works.





- Move in ready for drive-through bank
- Conveniently located at the corner of Gibraltar and Blair Mill Road
- Walk next door to Wawa, PJ Whelihans, and CVS Pharmacy
- 0.8 miles to PA Turnpike interchange at Rt. 611

LEASING INFORMATION

700 Dresher Road
Suite 150
Horsham, PA 19044
www.workspaceproperty.com

FOLLOW US ON



@workspacepropertytrust