

Find Your Space.

Paragon Business Center
951 Broken Sound Pkwy,
Suite 188
Boca Raton, FL 33487

7,011 SQ. FT.
Available Now

Asking Rent: \$17.00/NNN
2023 OPEX: \$7.99/RSF



workspace
property trust

Local Management Office



Tenant Appreciation Events

Property Highlights



AMENITIES

100% Tenant controlled with no shared spaces. Class "B" office/flex building in prestigious "The Park at Broken Sound". Featuring store front entrances with both individual and monument signage available, separately metered tenant-controlled electricity, zero loss factor, covered parking available, and roving security. Located in close proximity to numerous shopping centers, hotels, eateries, banking, big box retail, and fitness centers all within minutes from the campus.



TRANSPORTATION

Immediate access to Interstate 95. Free shuttle service from Tri-Rail with [The Park at Broken Sound](#) Shuttles.

TECHNOLOGY

AT&T, Level 3



SUSTAINABILITY

Green initiatives in place by tenants and property management to include janitorial and recycling.

WORKSPACE PROPERTY TRUST (WSPT®)

WSPT is a privately held, vertically integrated, full-service commercial real estate company specializing in the ownership, management, leasing, and development of Office, and Industrial / R&D / Flex (IRDF) spaces. Workspace owns and operates approximately 18 million square feet across over 200 properties in sought-after markets, including 13 of the top 20 US metropolitan areas.

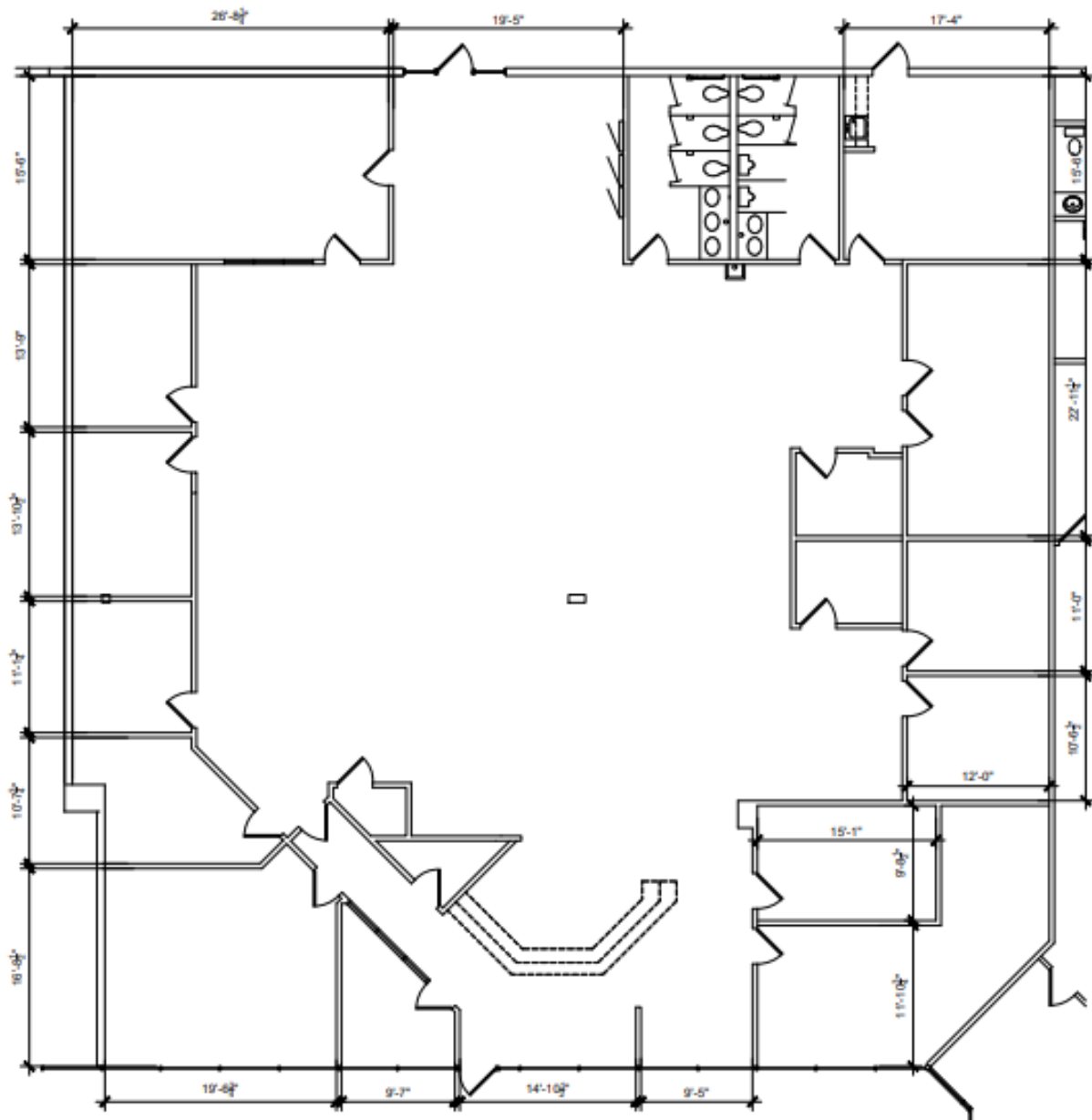


Our Space Works.

951 Broken Sound Parkway, Boca Raton, FL 33487

Suite 188

7,011 RSF



LEASING INFORMATION

3350 S.W 148th Ave
Suite 124
Miramar, FL 33027

www.workspaceproperty.com

Director of Leasing
Mike Nathanson
O 954.391.5526
C 954.695.5636

mnathansonr@workspaceproperty.com

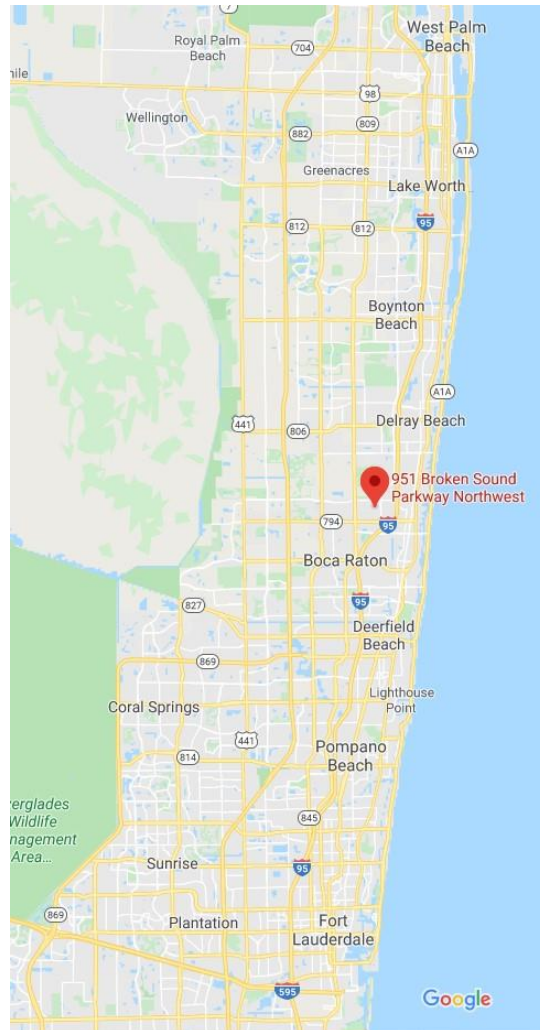
FOLLOW US ON



@workspacepropertytrust

951 Broken Sound Parkway, Boca Raton, FL 33487

FOR LEASE



LEASING INFORMATION

3350 S.W 148th Ave
Suite 124
Miramar, FL 33027
www.workspaceproperty.com

Director of Leasing
Mike Nathanson
O 954.391.5526
C 954.695.5636

mnathanson@workspaceproperty.com @workspacepropertytrust

FOLLOW US ON

