

201

Gibraltar Road

Horsham, PA 19044

workspace
property trust

23,381 SF Available for Lease

Office Space



201 Gibraltar Road

Horsham, PA 19044

Minutes from the PA Turnpike, Rt 63 and 611, 201 Gibraltar Road provides quick access to major roadways feeding into downtown Philadelphia, neighboring suburbs, and New Jersey. Lunchtime errands couldn't be easier with multiple lifestyle centers within a 10-minute drive from the office, including CVS, Wawa and PJ Whelihan's within walking distance.

Property Highlights

Building Owner: Workspace Property Trust

Total Building Size: 62,123 Square Feet

Available Space: 13,866 Square Feet

Finished Ceiling Height: 8'3" & 10'5"

Power:

- 1,200 AMP, 3 Phase electrical services
- 750 KW backup generator

Amenities:

- Walkable to *the Patio*, outdoor beer garden
- Campus fitness center and EV charging stations
- Access to Horsham's 11-mile Power Walking and Biking Trail



The Patio, On-Site Beer Garden



Campus Fitness Center

23,381 SF Available for Lease

Office Space

201 Gibraltar Road | Suite 100

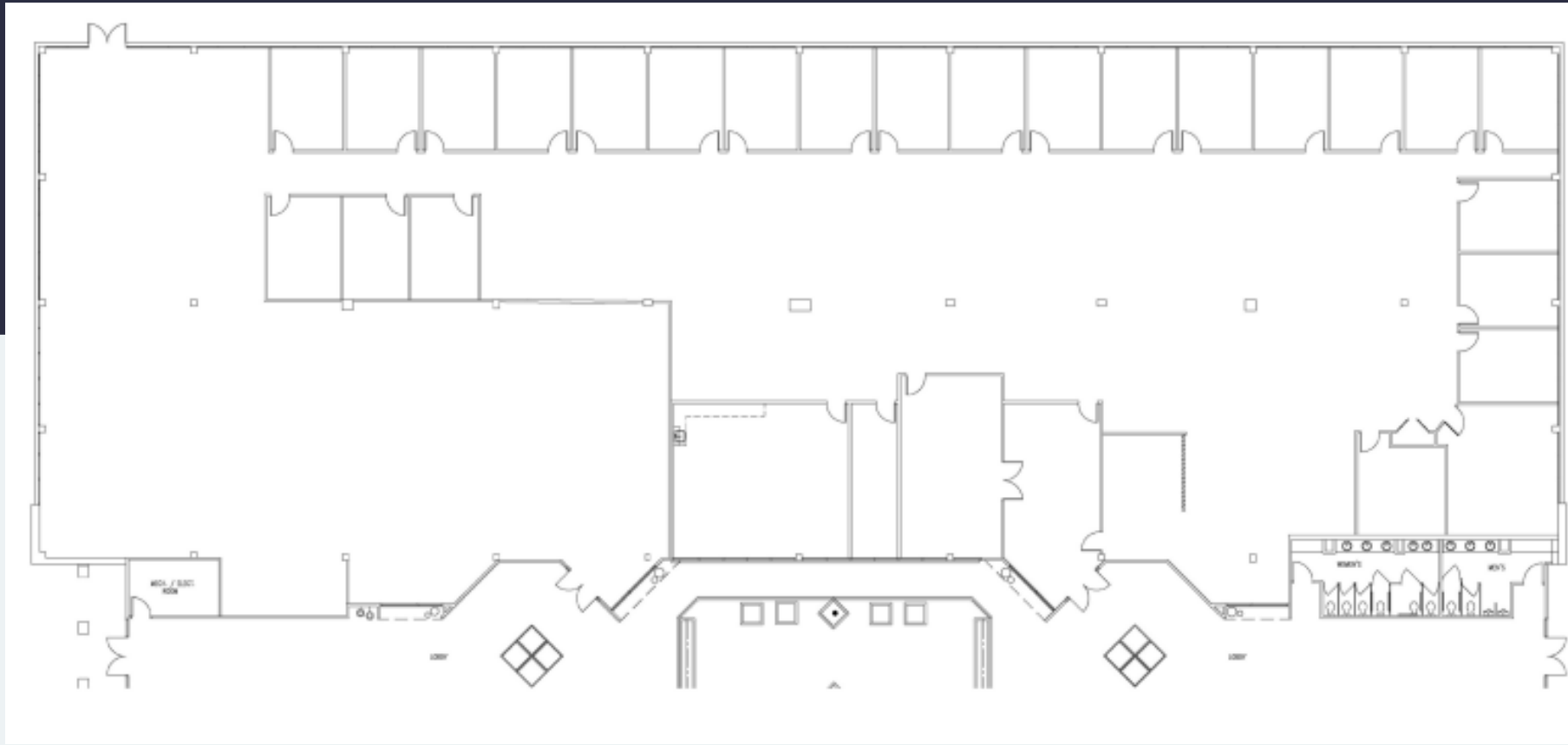
Horsham, PA 19044

workspace
property trust

23,381 SF Available for Lease

Office Space

CURRENT FLOOR
PLAN



Leasing Information

700 Dresher Road, Suite 150
(215) 328-2732
www.workspaceproperty.com

Doug Himmelreich
Director of Leasing
D.Himmelreich@workspaceproperty.com