

Find Your Space.

**750 Park of Commerce Blvd,
Suite 205**

Boca Raton, FL 33487

4,085 SQ. FT.

Plug and Play Furnished Space

Available Now

**Asking Rent: \$27.00/NNN
2023 OPEX: \$14.50/RSF**



Nature Preserve



Showers on First Floor

Property Highlights



AMENITIES

Class "A" office building with an abundant parking ratio of 4.5/1,000 SF. Hurricane resistant, structured garage parking, electric vehicle charging stations, and high-quality fiber optic network available throughout the building. On-site security, property management, conference facility and café with views of a nature preserve.



TRANSPORTATION

Immediate access to Interstate 95. Free shuttle service from Tri-Rail with [The Park at Broken Sound Shuttles](#).



TECHNOLOGY

AT&T, Comcast, Level 3



SUSTAINABILITY

Green initiatives in place by tenants and property management to include janitorial and recycling.



WORKSPACE PROPERTY TRUST (WSPT®)

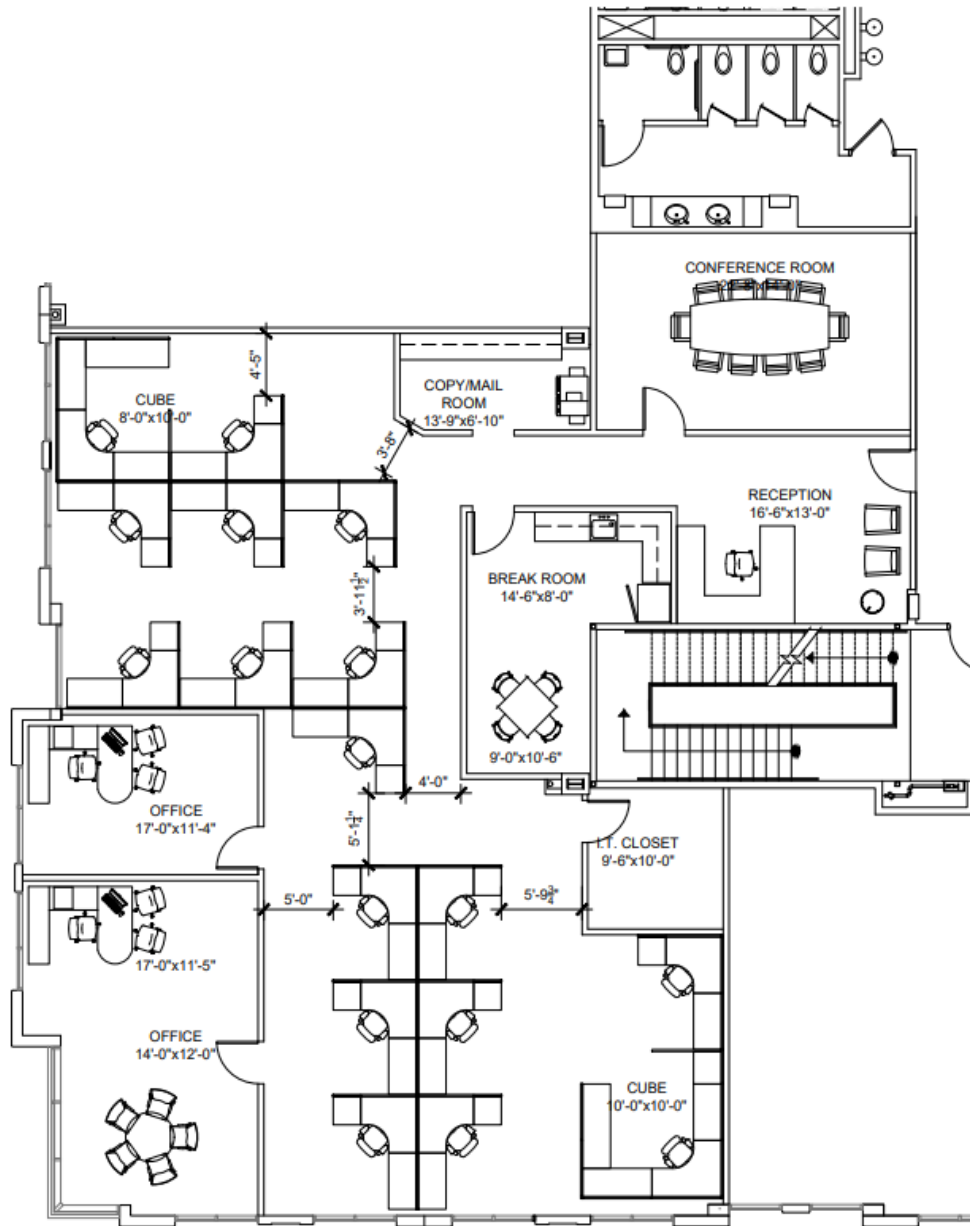
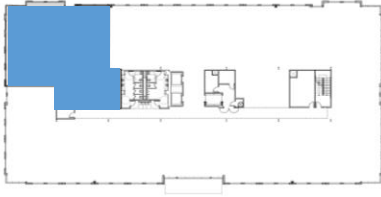
WSPT is a privately held, vertically integrated, full-service commercial real estate company specializing in the ownership, management, leasing, and development of Office, and Industrial / R&D / Flex (IRDF) spaces. Workspace owns and operates approximately 18 million square feet across over 200 properties in sought-after markets, including 13 of the top 20 US metropolitan areas.

Our Space Works.

750 Park of Commerce Blvd, Boca Raton, FL 33487

Suite 205

4,085 RSF



LEASING INFORMATION

3350 S.W 148th Ave
Suite 124
Miramar, FL 33027
www.workspaceproperty.com

Director of Leasing
Mike Nathanson
O 954.391.5526
C 954.695.5636

mnathanson@workspaceproperty.com @workspacepropertytrust

FOLLOW US ON



750 Park of Commerce Blvd, Boca Raton, FL 33487

FOR LEASE



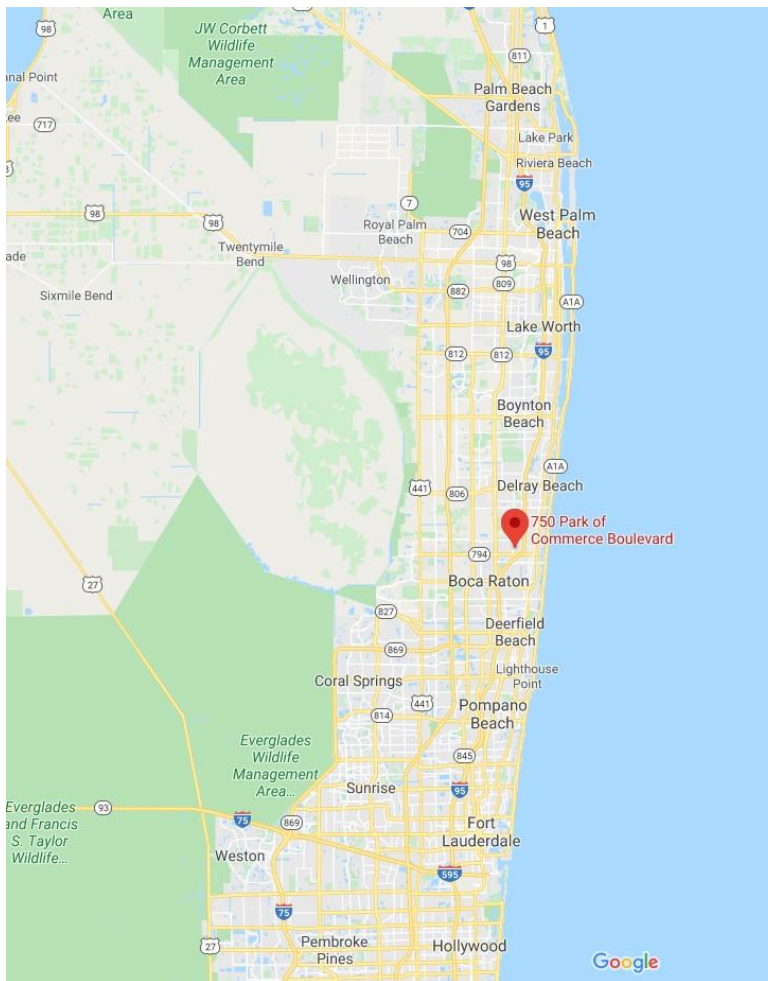
**Electric Vehicle
Charging Now
Available on Campus!**

Download the
Workspace App for
charging locations.



Available on the
App Store

GET IT ON
Google Play



**LEASING
INFORMATION**

3350 S.W 148th Ave
Suite 124
Miramar, FL 33027
www.workspaceproperty.com

Director of Leasing
Mike Nathanson
O 954.391.5526
C 954.695.5636

mnathanson@workspaceproperty.com @workspacepropertytrust

FOLLOW US ON

