

11200

# W Parkland Ave | Parkland Center

Milwaukee, WI 53224



## 39,291 SF Available for Lease

Office Space



# 11200 West Parkland Ave

Milwaukee, WI 53224

This Gold level, LEED certified property is ideal for a large user looking for a location with everything under one roof. Parkland Center presents with a newly renovated lobby and ground floor, an on-site fitness center complete with a proper exercise studio, on-site café with a self-pay micro market and indoor/outdoor seating.

Additional highlights include access to multiple retail centers, daycares, hotels, quick access to I-41, and Dretzka recreational park and golf course.

Plug-and-play opportunities are available, and the larger space can be divisible to 13,500 SF office space, or ground floor white box of 30,000 SF.

## Property Highlights

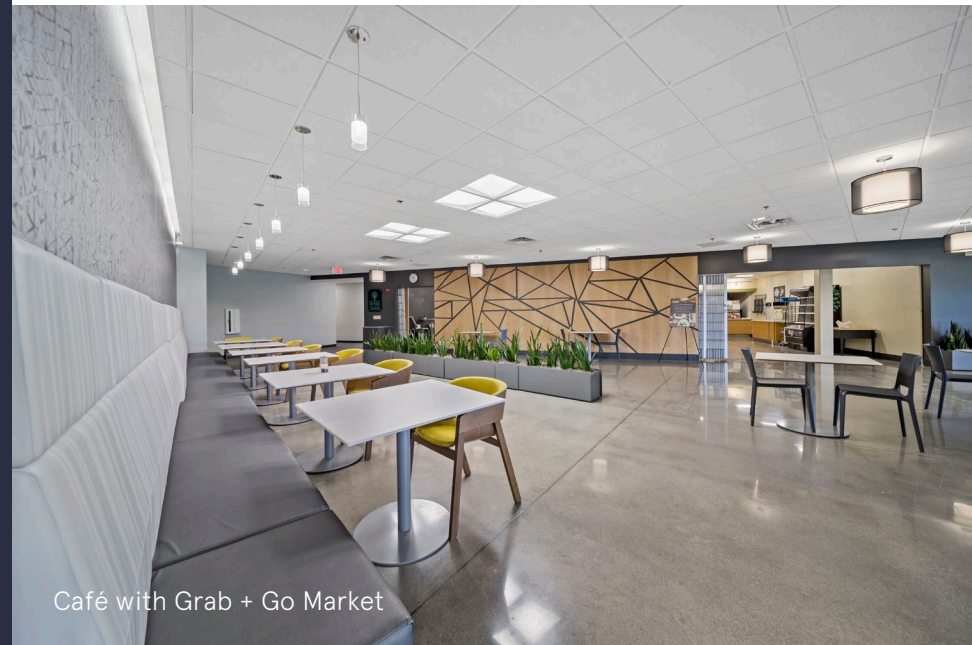
**Building Owner:** Workspace Property Trust

**Total Building Size:** 222,704

**Available Space:** 9,291-30,000 Square Feet

**Ceiling Height:** 14'

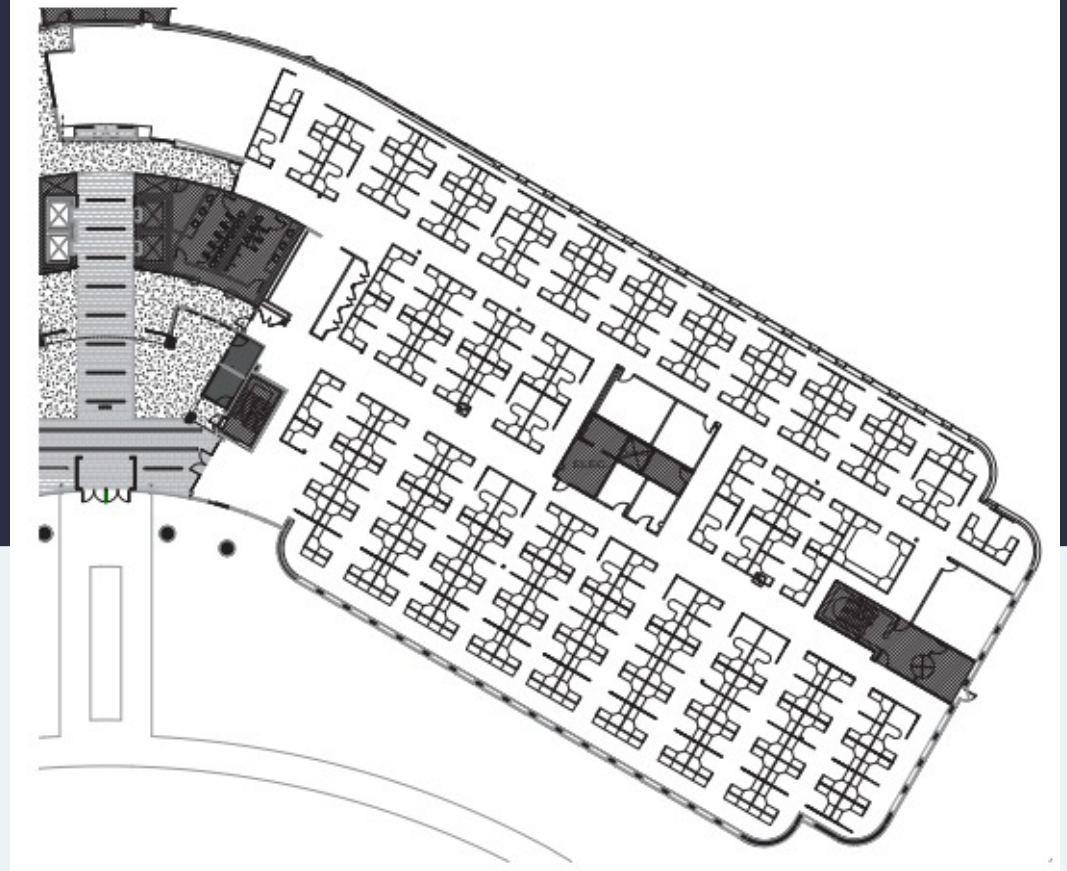
**Parking:** 5.15/1,000 SF | 1,203 spaces



39,291 SF Available for Lease

# 11200 West Parkland Ave | Parkland Center

Milwaukee, WI 53224



9,291 SF Available  
Ground Floor Suite  
with furniture

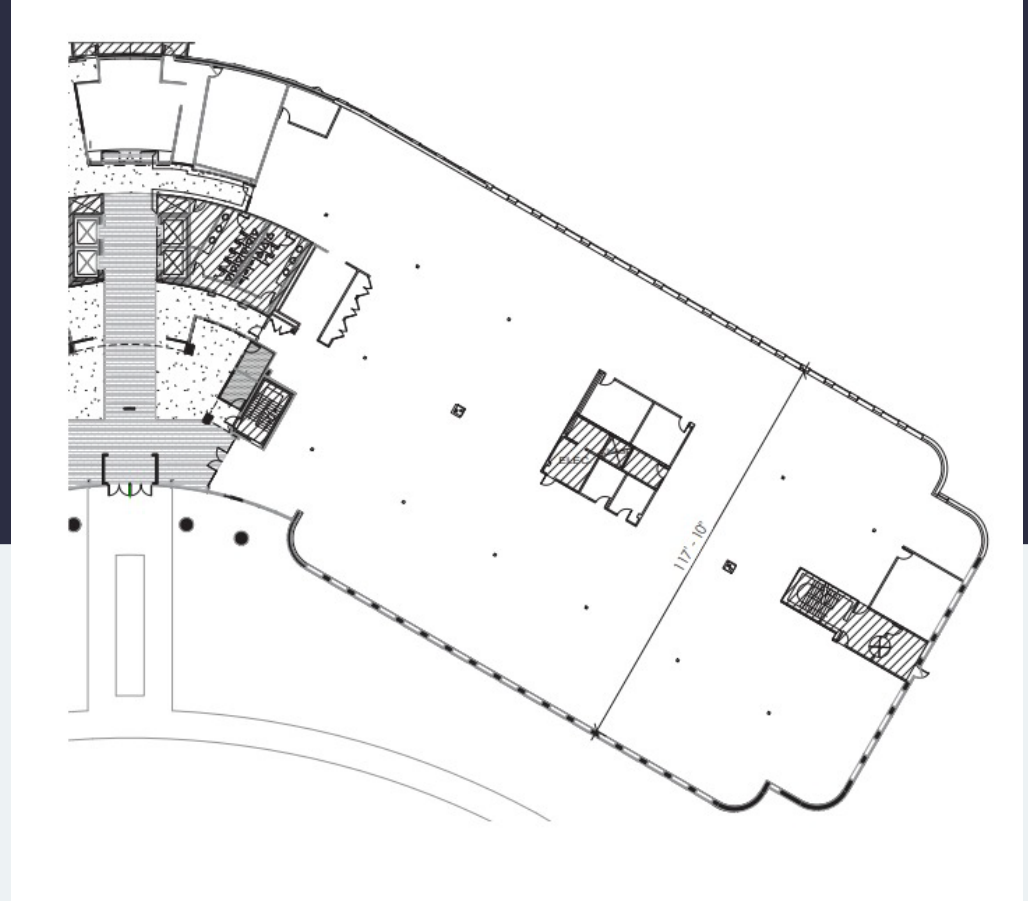
Leasing Information

Tony Nichols  
Senior Vice President, Leasing  
215.328.2748 | [tnichols@workspaceproperty.com](mailto:tnichols@workspaceproperty.com)

**workspace**  
property trust

# 11200 West Parkland Ave | Parkland Center

Milwaukee, WI 53224



30,000 SF Available  
white box space

Leasing Information

Tony Nichols  
Senior Vice President, Leasing  
215.328.2748 | [tnichols@workspaceproperty.com](mailto:tnichols@workspaceproperty.com)

**workspace**  
property trust