

300 Welsh Road Building #4 | Suite 100

Horsham, PA 19044

workspace
property trust

3,638 SF Available Now

Office Space



300 Welsh Road Building #4 | Suite 100

Horsham, Pennsylvania, 19044

PROPERTY HIGHLIGHTS

AMENITIES

Single story building visible and accessible from Rt 63 (Welsh Road). Multiple entry points from the parking lot--excellent opportunity for long term medical office tenant. Numerous shopping centers, hotels, dining options, banking, retail, daycare and fitness centers under a 2-minute drive. Plus, sports leagues, landlord-coordinated social and networking events.

TRANSPORTATION

Proximate access to 2 PA Turnpike access points, Routes 611 and 309, SEPTA Routes 80 & 310 with multiple stops throughout the Pennsylvania Business Campus.

Horsham Township's h.o.p.s shuttle service is also available to tenants, facilitating transportation between the SEPTA Regional Rail, the Horsham Business Center & the PA Lifestyle Campus.

SUSTAINABILITY

Energy Star labeled building. Green initiatives in place by tenants and property management to include janitorial and recycling.

Building Owner: Workspace Property Trust

Total Building Size: 23,461

Ceiling Height: 8'6"



Updated Lobby



3,638 SF Available Now

Office Space



3,638 SF Available Now

300 Welsh Road Building #4 | Suite 100

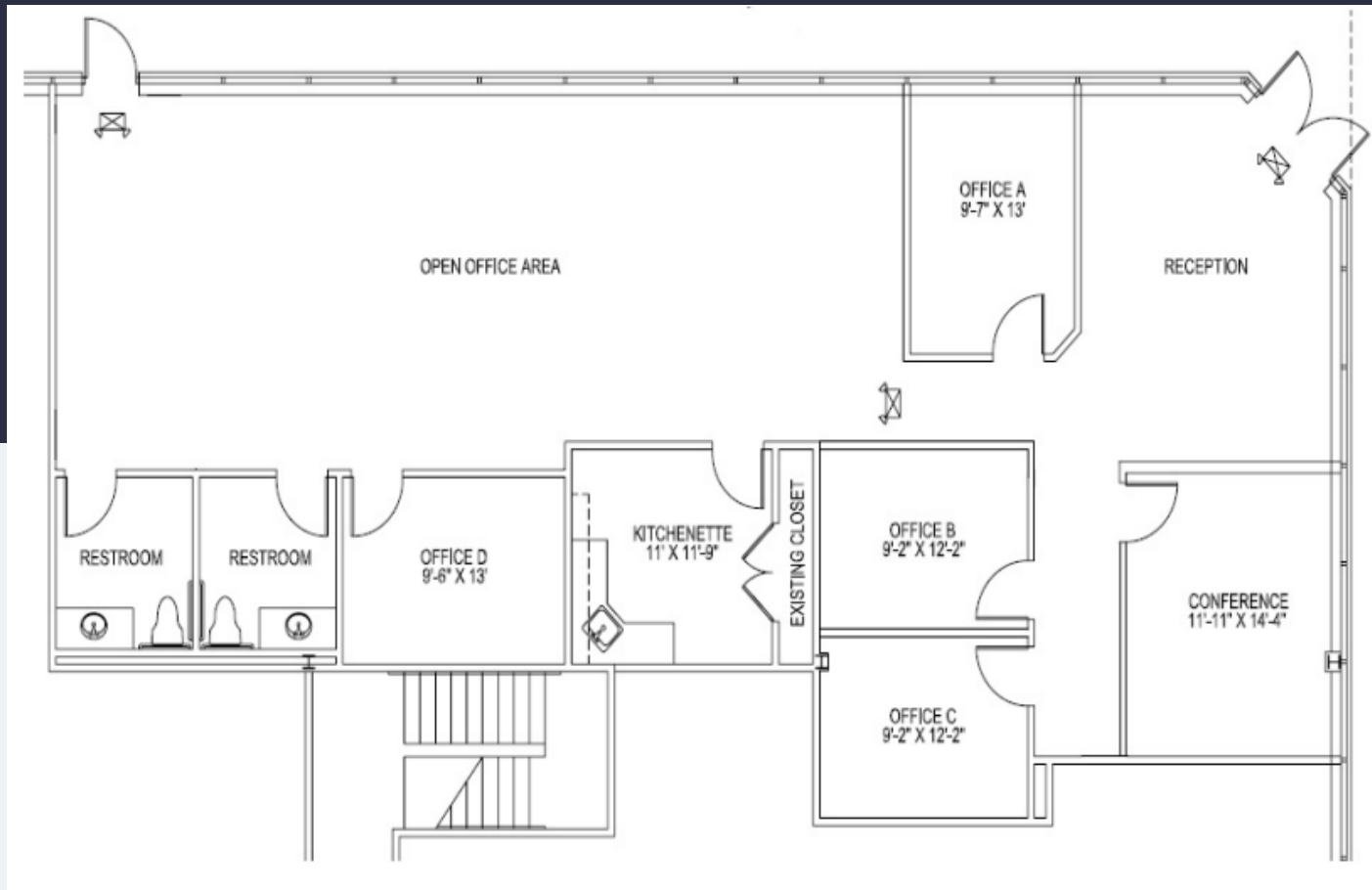
300 Welsh Road Building #4 | Suite 100

Horsham, Pennsylvania 19044



3,638 SF Available for Lease

Office Space



Leasing Information

700 Dresher Road, Suite 150
(215) 328-2732
www.workspaceproperty.com

Doug Himmelreich
Director of Leasing
D.Himmelreich@workspaceproperty.com