

0012

Morris Drive

Wayne, PA 19087

workspace
property trust

Up to 23,432 Available for Lease

Office Space



1200 Morris Drive

Wayne, PA 19087

This property comes highly amenitized with a 24/7 state-of-the-art fitness center, showers, outdoor seating, electric car charging, and a micro market for the convenience of quick grab-and-go refreshments.

The trail system around the building will take you to Wilson Farm Park and Valley Forge National Park. Located in the Keystone Innovation Zone, this property includes easy access to Routes 202, 252, 422, 76, and public transportation.

Property Highlights

Building Owner: Workspace Property Trust

Total Building Size: 114,071 Square Feet

Available Space: Up to 23,432 Square Feet

Branding: Building Monument Signage & Great Visibility

Off 1st Floor Lobby



23,432 SF Available for Lease

Office Space

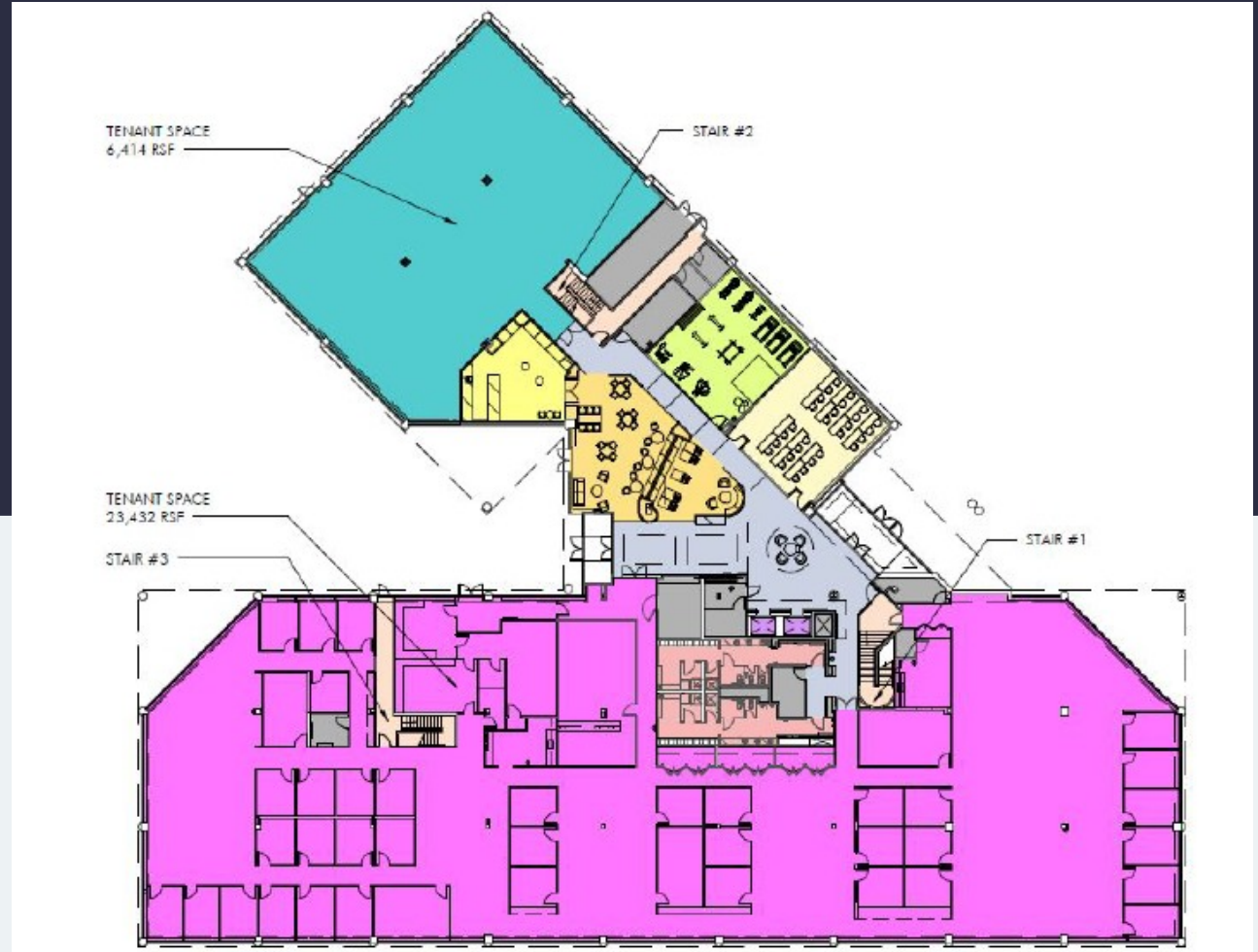
1200 Morris Drive

Wayne, PA 19087

workspace
property trust

Up to
23,432 SF
Available for Lease

Office Space



Leasing Information

7 Great Valley Parkway, Suite 190, Malvern, PA, 19355
(484) 320-3708
www.workspaceproperty.com

Doug Himmelreich
Director of Leasing
dhimmelreich@workspaceproperty.com



Spaces for the Way Work Happens Today.

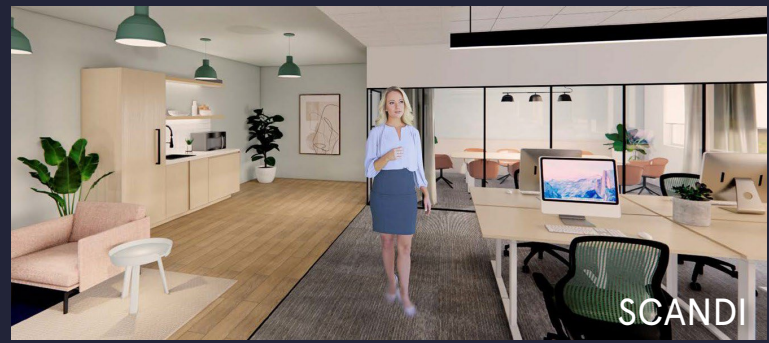
These beautifully designed themes inspire creativity and encourage productivity. Whether you are looking for 1,000 square feet or 100,000 square feet, our in-house design & development team can deliver a turnkey office solution.

Tailored for the Evolution of Office:

- "A La Carte" or "On Demand" Furniture Packages Available
- Plug & Play IT Packages Available



Scan here to learn more about our premium theme selects.



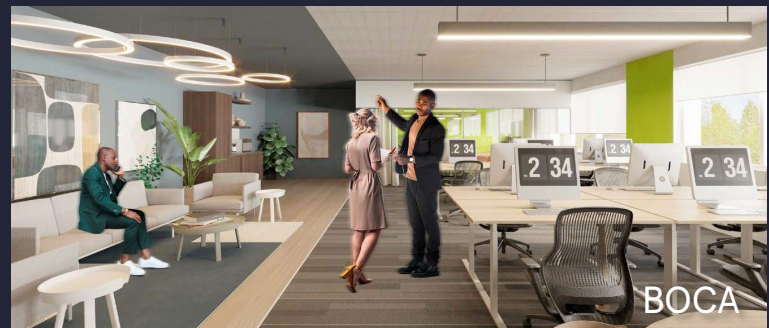
SCANDI



AZURE



TAHOE



BOCA

*Indicative of the look and feel (not the actual suite)