

0  
0  
4  
4

# Liberty Ridge Drive

Wayne, PA 19087

workspace  
property trust

Up to 72,351 Available for Lease

Office Space



# 1400 Liberty Ridge Drive

Wayne, PA 19087

This property provides gorgeous views of Valley Forge Mountain with generous amounts of outdoor seating. The ground floor hosts the 24/7 access fitness center with free weights, cardio, resistance machines, an exercise room, and spacious locker rooms. Follow the walking path to 1500, 1550 Liberty Ridge Drive, where you'll find a new conferencing center and a micro market for grab-and-go convenience. The trail system around the building will take you to Wilson Farm Park and Valley Forge National Park. Located in the Keystone Innovation Zone, this property includes easy access to Routes 202, 252, 422, 76, and public transportation.

## Property Highlights

**Building Owner:** Workspace Property Trust

**Total Building Size:** 104,818 Square Feet

**Available Space:** Up to 72,351 Square Feet

**Amenities:** 24/7 Fitness Center on Ground Floor,  
Conferencing Center and Micro Market Next Door

**Space Condition:** Plug & Play/Move-in Ready



Up to 72,351 SF Available for Lease

Office Space

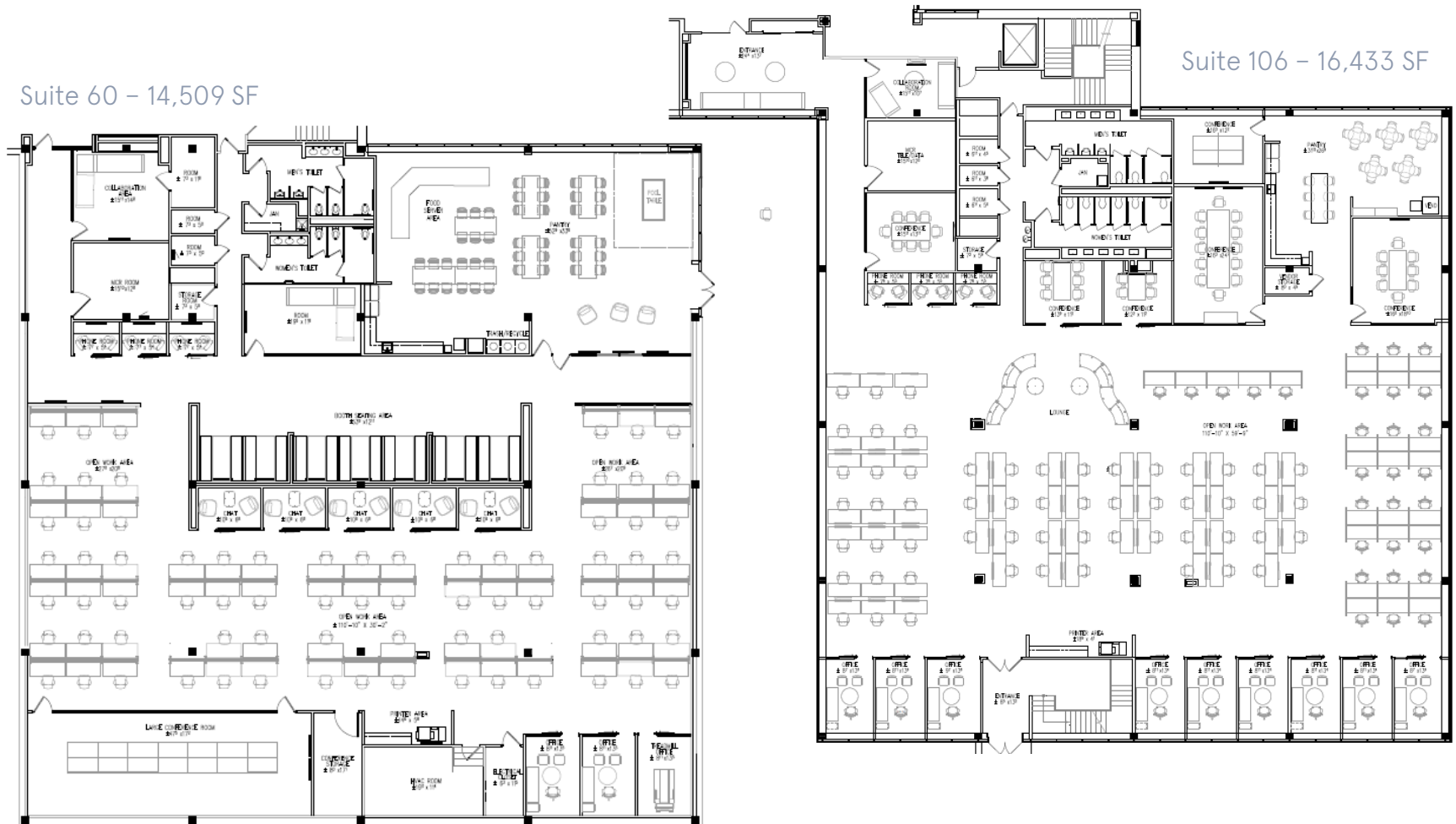
# 1400 Liberty Ridge Drive

Wayne, PA 19087

**workspace**  
property trust

## Up to 72,351 SF Available for Lease

Office Space



# 1400 Liberty Ridge Drive

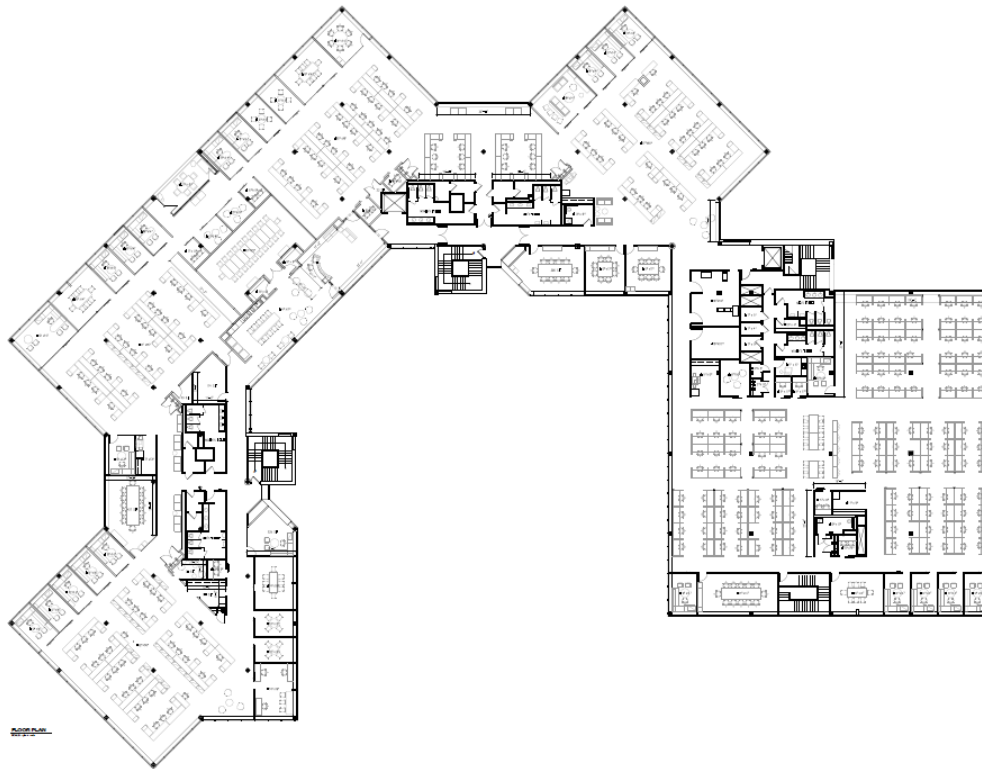
Wayne, PA 19087



## Up to 72,351 SF Available for Lease

Office Space

Suite 200 - 41,409 SF



## Leasing Information

7 Great Valley Parkway, Suite 190, Malvern, PA, 19355  
(484) 320-3708  
[www.workspaceproperty.com](http://www.workspaceproperty.com)

Doug Himmelreich  
Director of Leasing  
[dhimmelreich@workspaceproperty.com](mailto:dhimmelreich@workspaceproperty.com)



# Spaces for the Way Work Happens Today.

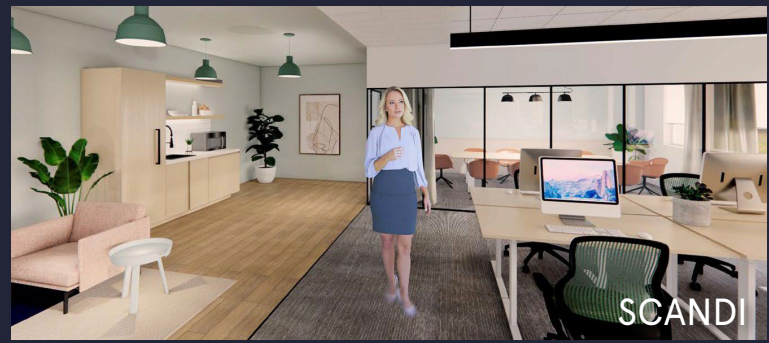
These beautifully designed themes inspire creativity and encourage productivity. Whether you are looking for 1,000 square feet or 100,000 square feet, our in-house design & development team can deliver a turnkey office solution.

## Tailored for the Evolution of Office:

- "A La Carte" or "On Demand" Furniture Packages Available
- Plug & Play IT Packages Available



Scan here to learn more about our premium theme selects.



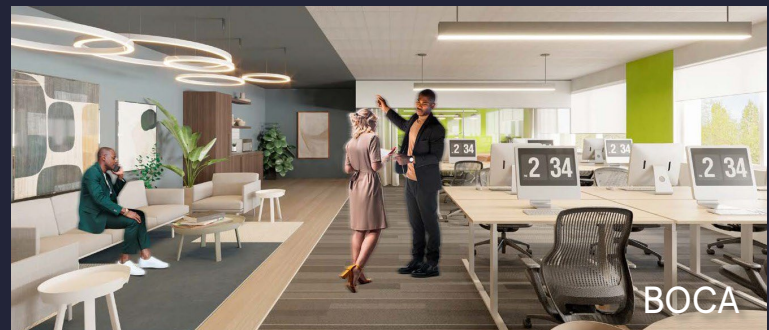
SCANDI



AZURE



TAHOE



BOCA

\*Indicative of the look and feel (not the actual suite)