

0517

Liberty Ridge Drive, Suite 140

Wayne, PA 19087

workspace
property trust

9,075 Available for Lease

Office Space



1500, 1550 Liberty Ridge Drive, Suite 140

Wayne, PA 19087

This property provides gorgeous views of Valley Forge Mountain with generous amounts of outdoor seating. On the first floor, you'll find a brand-new conferencing center and a micro market for grab-and-go convenience. Follow the walking trail up to 1400 Liberty Ridge Drive where the 24/7 access fitness center with free weights, cardio, resistance machines, an exercise room, and spacious locker rooms can be found on the ground floor.

Executive-level garage parking is available below the building. The trail system around the building will take you to Wilson Farm Park and Valley Forge National Park. Located in the Keystone Innovation Zone, this property includes easy access to Routes 202, 252, 422, 76, and public transportation.

Property Highlights

Building Owner: Workspace Property Trust

Total Building Size: 208,974 Square Feet

Ceiling Height: 9' Throughout

Amenities: 24/7 Fitness Center Next Door, Conferencing Center and Micro Market on 1st Floor, Executive Parking Under Building



9,075 SF Available for Lease

Office Space

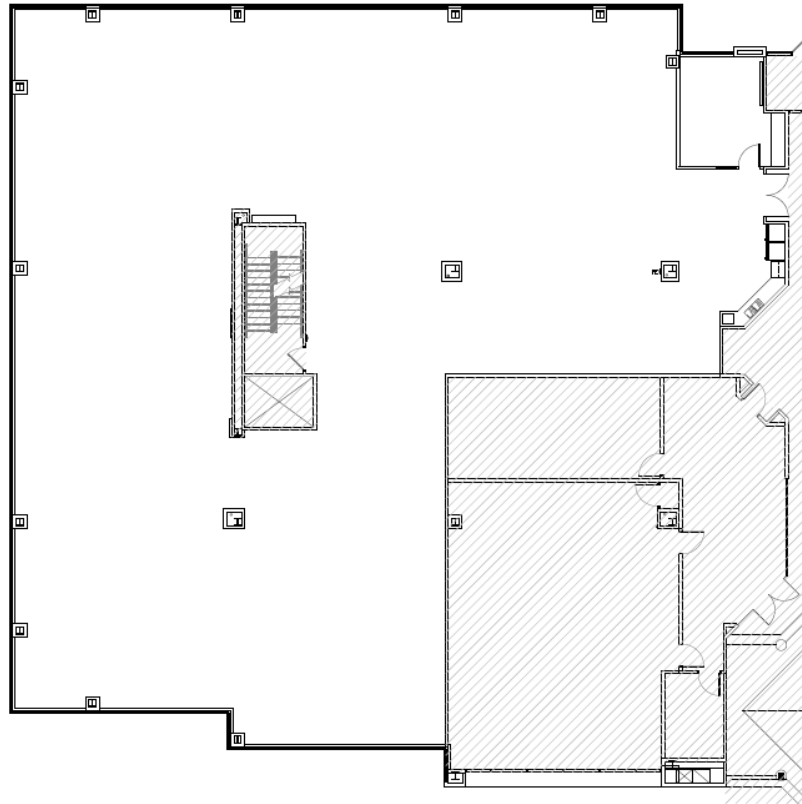
1500, 1550 Liberty Ridge Drive, Suite 140

Wayne, PA 19087



9,075 SF Available for Lease

Office Space



Leasing Information

7 Great Valley Parkway, Suite 190, Malvern, PA, 19355
(484) 320-3708
www.workspaceproperty.com

Doug Himmelreich
Director of Leasing
dhimmelreich@workspaceproperty.com



Spaces for the Way Work Happens Today.

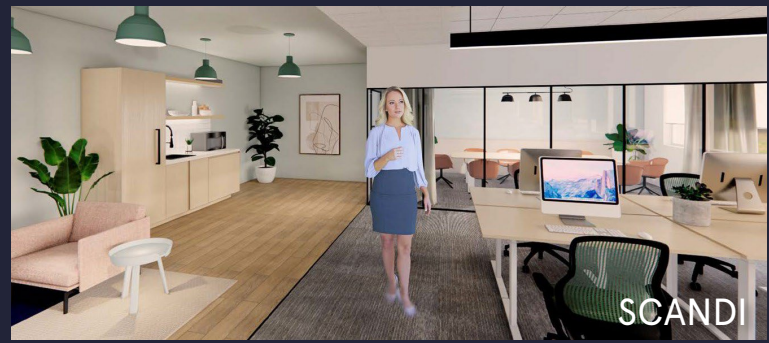
These beautifully designed themes inspire creativity and encourage productivity. Whether you are looking for 1,000 square feet or 100,000 square feet, our in-house design & development team can deliver a turnkey office solution.

Tailored for the Evolution of Office:

- "A La Carte" or "On Demand" Furniture Packages Available
- Plug & Play IT Packages Available



Scan here to learn more about our premium theme selects.



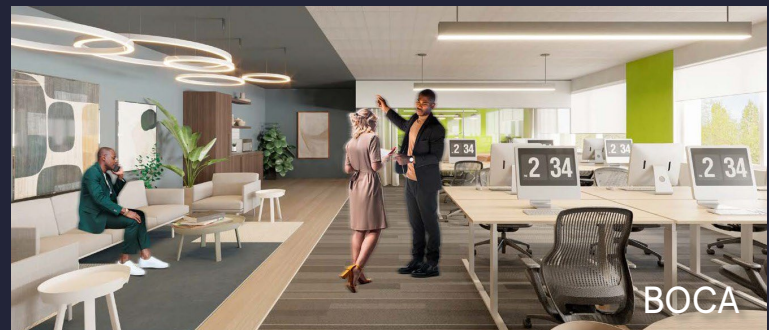
SCANDI



AZURE



TAHOE



BOCA

*Indicative of the look and feel (not the actual suite)