

0
8
1

Sheree Boulevard, Building 1000

workspace
property trust

Exton, PA 19341

4,811-29,527 SF Available for Lease

Office Space



180 Sheree Boulevard, Building 1000

Exton, PA 19341

This property includes amenities such as nearby shopping, restaurants, hotels, daycare facilities and Marsh Creek State Park. It's located in the Keystone Innovation Zone and includes easy access to the PA Turnpike and Routes 100, 113, & 401. Direct access to each suite also provides the opportunity for private outdoor collaboration areas and on-grade loading.

Workspace Property Trust is a privately held, vertically integrated, full-service commercial real estate company specializing in the ownership, management, leasing, and development of Office, and Industrial / R&D / Flex (IRDF) spaces.

Property Highlights

Building Owner: Workspace Property Trust

Total Building Size: 31,397 Square Feet

Available Space: 4,811-29,527 Square Feet

Ceiling Height: 8.5' Throughout

Features: Direct Entrances & Individualized HVAC



4,811-29,527 SF Available for Lease

Office Space

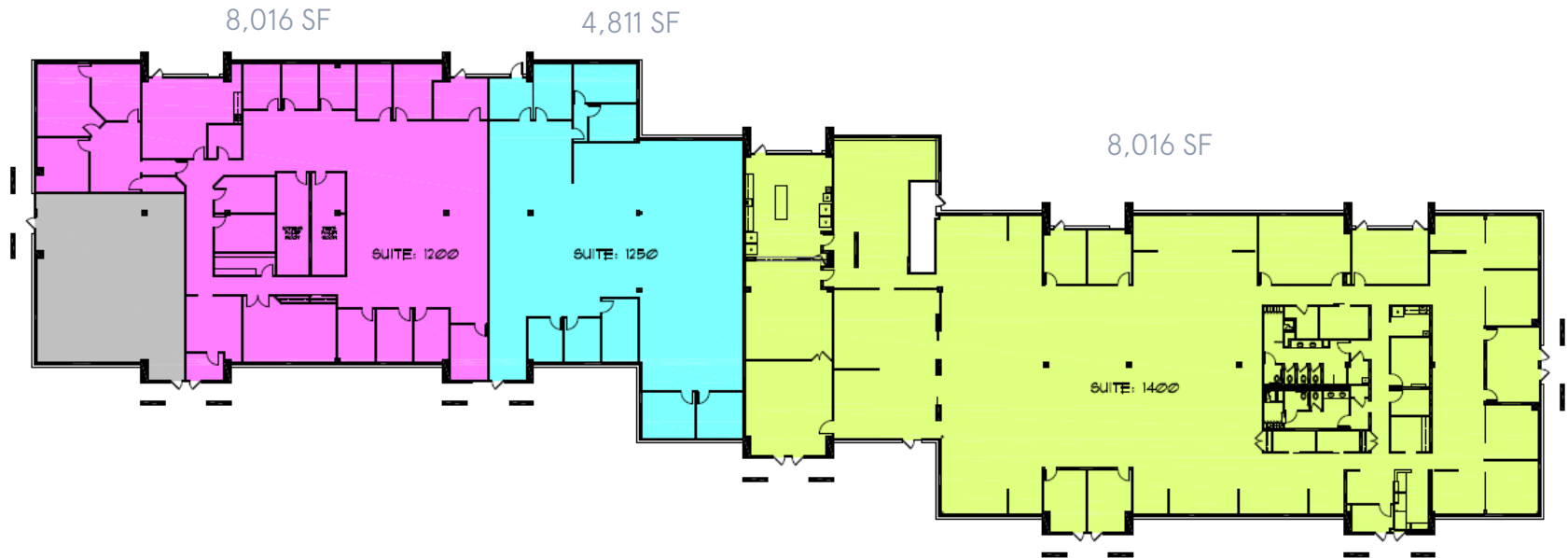
180 Sheree Boulevard, Building 1000

Exton, PA 19341



4,811-29,527 SF Available for Lease

Office Space



Leasing Information

7 Great Valley Parkway, Suite 190, Malvern, PA, 19355
(484) 320-3708
www.workspaceproperty.com

Doug Himmelreich
Director of Leasing
dhimmelreich@workspaceproperty.com



Spaces for the Way Work Happens Today.

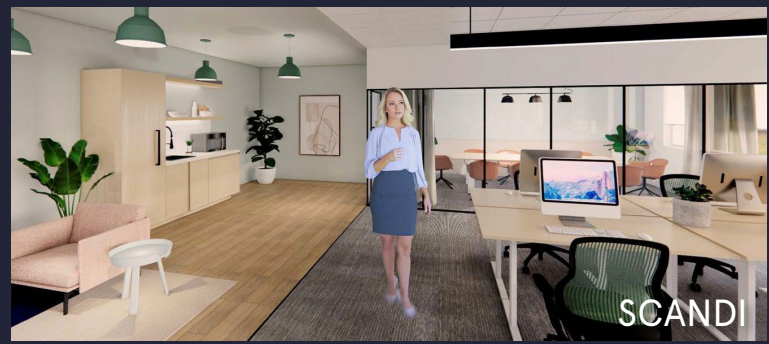
These beautifully designed themes inspire creativity and encourage productivity. Whether you are looking for 1,000 square feet or 100,000 square feet, our in-house design & development team can deliver a turnkey office solution.

Tailored for the Evolution of Office:

- "A La Carte" or "On Demand" Furniture Packages Available
- Plug & Play IT Packages Available



Scan here to learn more about our premium theme selects.



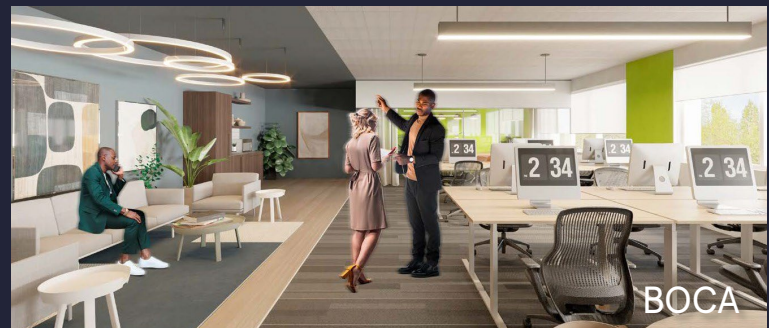
SCANDI



AZURE



TAHOE



BOCA

*Indicative of the look and feel (not the actual suite)