

100 Witmer Road | Suite 260

Horsham, PA 19044



3,246 SF Available Now

Office Space



100 Witmer Road | Suite 260

Horsham, Pennsylvania, 19044

PROPERTY HIGHLIGHTS

AMENITIES

100 Witmer Rd has an updated atrium lobby including new collaborative furniture and guest Wi-Fi. 100 Witmer Road is located at the highly visible intersection of Blair Mill and Witmer Roads in the PA Lifestyle Campus and has convenient access to public transportation. EV charging and on-site fitness is available to tenants.

TRANSPORTATION

Commuting to and from the office for employees and visitors across the tri-state area couldn't be easier, as the PA Turnpike, Route 611, and 63 are all within a 5-minute drive from 110 Gibraltar.

Horsham Township's h.o.p.s shuttle service is also available to tenants, facilitating transportation between the SEPTA Regional Rail, the Horsham Business Center & the PA Lifestyle Campus.

SUSTAINABILITY

Energy Star labeled building. Green initiatives in place by tenants and property management to include janitorial and recycling.

Building Owner: Workspace Property Trust

Total Building Size: 139,128

Ceiling Height: 8'6"

3,246 SF Available Now

Office Space



On-site Fitness Center



EV Charging Station



Renovated Lobby



Lounge Seating

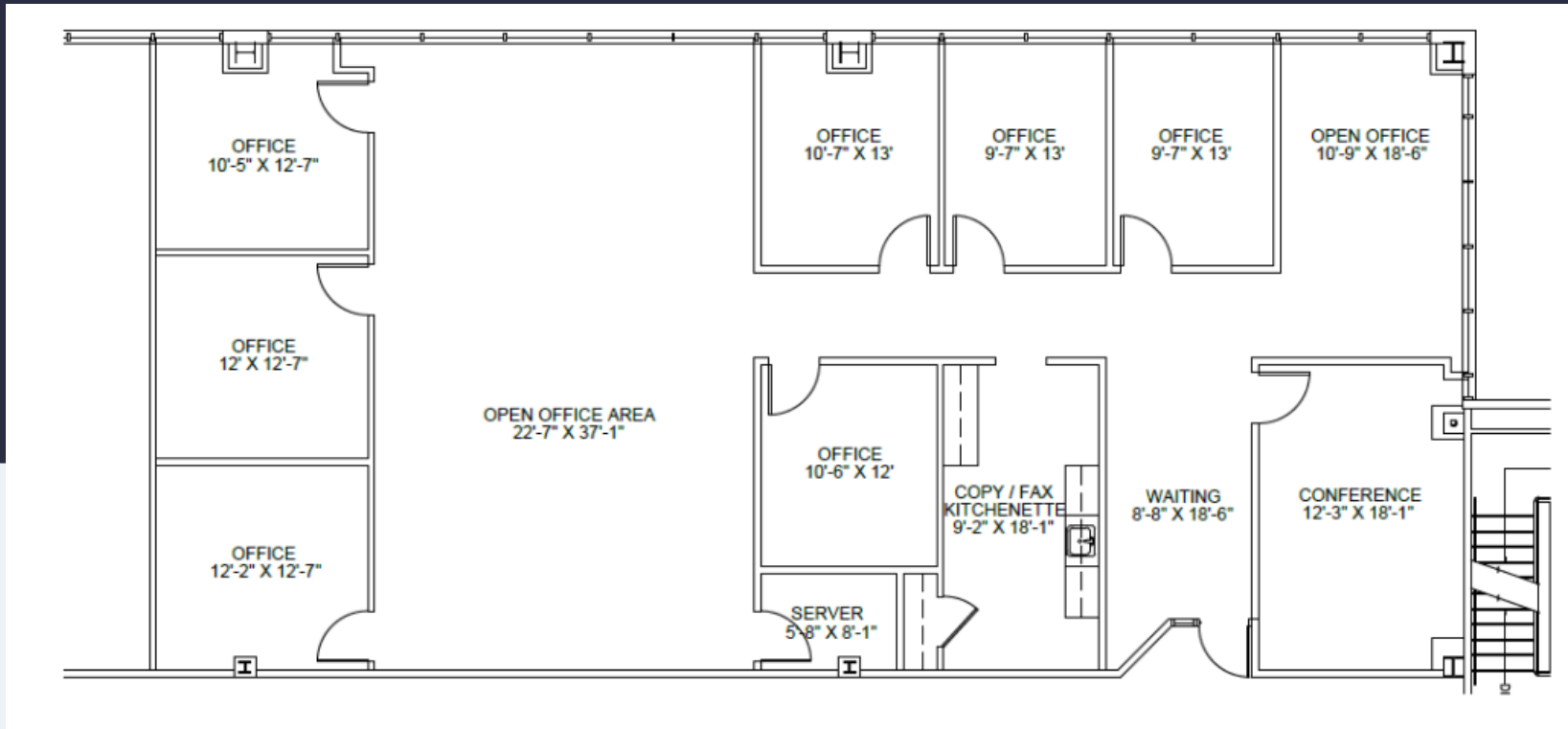


Low-rise Office

3,246 SF Available Now

100 Witmer Road I Suite 260

Horsham, Pennsylvania 19044



Leasing Information

700 Dresher Road, Suite 150
(215) 328-2732
www.workspaceproperty.com

Doug, Himmelreich
Director of Leasing
dhimmelreich@workspaceproperty.com



Spaces for the Way Work Happens Today.

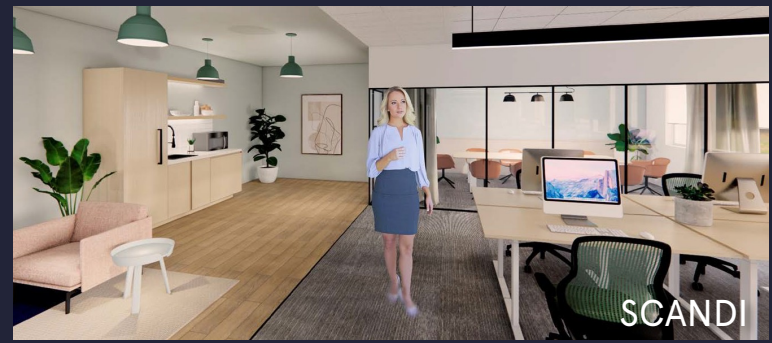
These beautifully designed themes inspire creativity and encourage productivity. Whether you are looking for 1,000 square feet or 100,000 square feet, our in-house design & development team can deliver a turnkey office solution.

Tailored for the Evolution of Office:

- “A La Carte” or “On Demand” Furniture Packages Available
- Plug & Play IT Packages Available



Scan here to learn more about our premium theme selects.



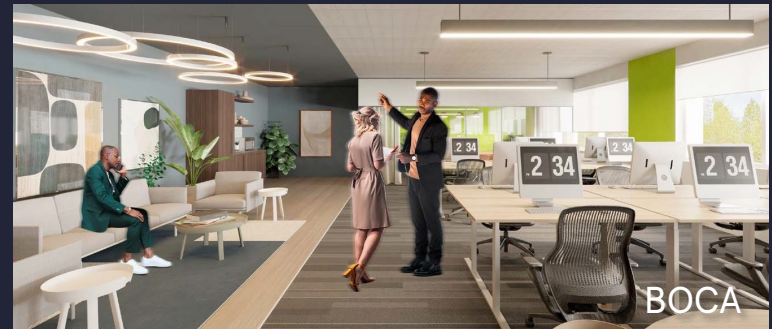
SCANDI



AZURE



TAHOE



BOCA

*Indicative of the look and feel (not the actual suite)