

# 240 Gibraltar Road | Suite 150

Horsham, PA 19044

**workspace**  
property trust

## 4,562 SF Available Now

Office Space



# 240 Gibraltar Road I Suite 150

Horsham, Pennsylvania, 19044

## PROPERTY HIGHLIGHTS

### AMENITIES

240 Gibraltar Road is an Energy Star-rated, three-story, multi-tenant office building in Horsham, Pennsylvania. The Class A office features a fitness center with showers, a full-service on-site café with outside patio seating, on-site fitness center, an updated two-story atrium lobby with new furniture and finishes, and abundant natural light.

240 Gibraltar Road offers partially and fully built-out space with various floor plans and is move-in ready

### TRANSPORTATION

Proximate location to (2) Pennsylvania Turnpike access points.

Horsham Township's h.o.p.s shuttle service is also available to tenants, facilitating transportation between the SEPTA Regional Rail, the Horsham Business Center & the PA Lifestyle Campus.

**Building Owner:** Workspace Property Trust

**Total Building Size:** 63,587

**Ceiling Height:** 8'6"



On-site Fitness



On-site Café, Duke's Cafe

4,562 SF Available Now

Office Space





4,562 SF Available Now

240 Gibraltar Road | Suite 150

# 240 Gibraltar Road I Suite 150

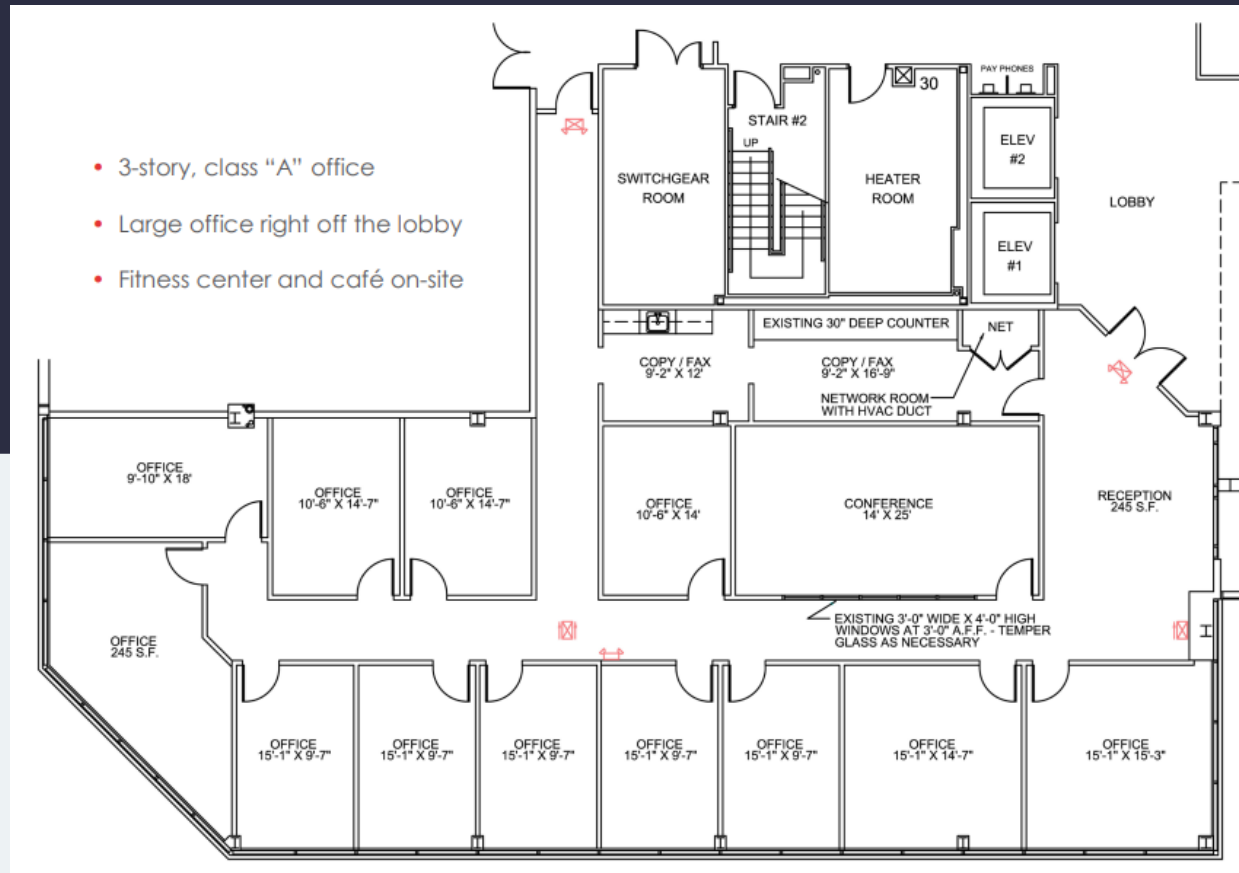
Horsham, Pennsylvania 19044

**workspace**  
property trust

## 4,562 SF Available for Lease

Office Space

- 3-story, class "A" office
- Large office right off the lobby
- Fitness center and café on-site



## Leasing Information

700 Dresher Road, Suite 150  
(215) 328-2732  
[www.workspaceproperty.com](http://www.workspaceproperty.com)

Doug Himmelreich  
Director of Leasing  
[D.Himmelreich@workspaceproperty.com](mailto:D.Himmelreich@workspaceproperty.com)





# Spaces for the Way Work Happens Today.

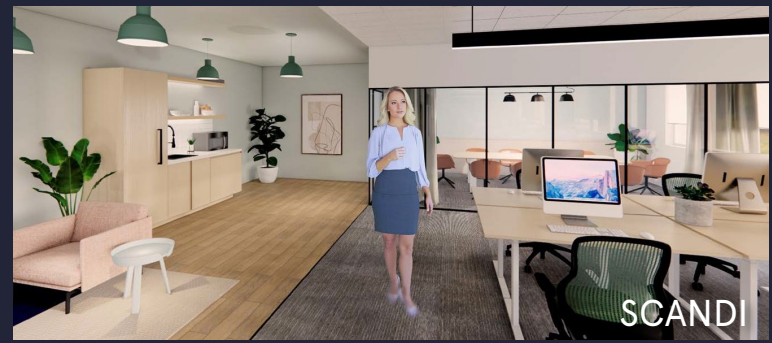
These beautifully designed themes inspire creativity and encourage productivity. Whether you are looking for 1,000 square feet or 100,000 square feet, our in-house design & development team can deliver a turnkey office solution.

## Tailored for the Evolution of Office:

- "A La Carte" or "On Demand" Furniture Packages Available
- Plug & Play IT Packages Available



Scan here to learn more about our premium theme selects.



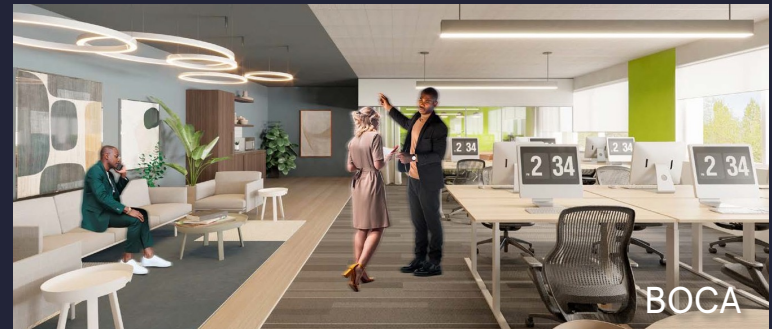
SCANDI



AZURE



TAHOE



BOCA

\*Indicative of the look and feel (not the actual suite)