

300 Welsh Road Building #4 | Suite 160

Horsham, PA 19044



4,453 SF Available Now

Office Space



300 Welsh Road Building #4 | Suite 160

Horsham, Pennsylvania, 19044

PROPERTY HIGHLIGHTS

AMENITIES

Single story building visible and accessible from Rt 63 (Welsh Road). Multiple entry points from the parking lot--excellent opportunity for long term medical office tenant. Numerous shopping centers, hotels, dining options, banking, retail, daycare and fitness centers under a 2-minute drive. Plus, sports leagues, landlord-coordinated social and networking events.

TRANSPORTATION

Proximate access to 2 PA Turnpike access points, Routes 611 and 309, SEPTA Routes 80 & 310 with multiple stops throughout the Pennsylvania Business Campus.

Horsham Township's h.o.p.s shuttle service is also available to tenants, facilitating transportation between the SEPTA Regional Rail, the Horsham Business Center & the PA Lifestyle Campus.

SUSTAINABILITY

Energy Star labeled building. Green initiatives in place by tenants and property management to include janitorial and recycling.

Building Owner: Workspace Property Trust

Total Building Size: 23,461

Ceiling Height: 8'6"



4,453 SF Available Now

Office Space



4,435 SF Available Now

300 Welsh Road Building #4 | Suite 160

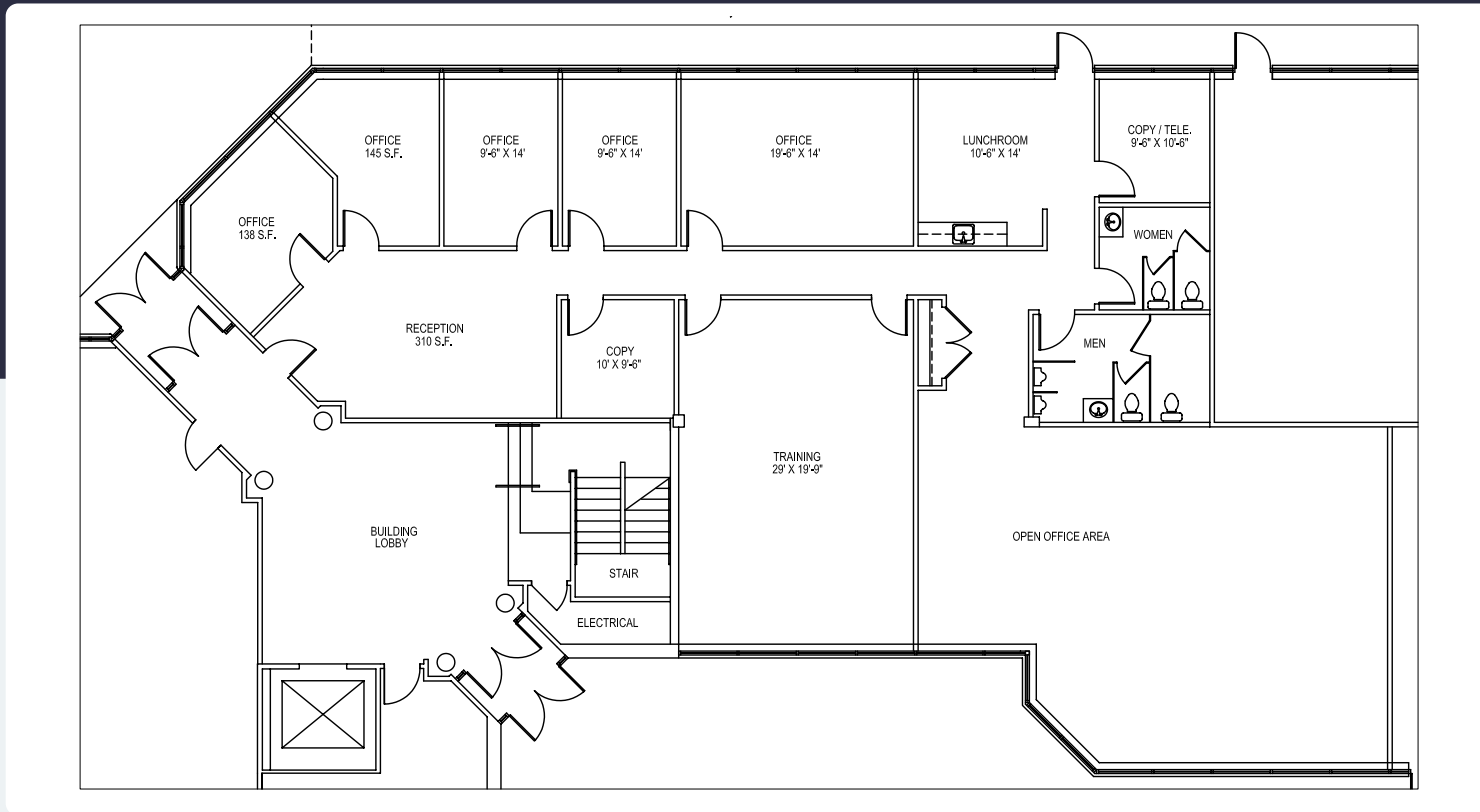
300 Welsh Road Building #4 | Suite 160

Horsham, Pennsylvania 19044



4,453 SF Available for Lease

Office Space



Leasing Information

700 Dresher Road, Suite 150
(215) 328-2732
www.workspaceproperty.com

Doug Himmelreich
Director of Leasing
D.Himmelreich@workspaceproperty.com



Spaces for the Way Work Happens Today.

These beautifully designed themes inspire creativity and encourage productivity. Whether you are looking for 1,000 square feet or 100,000 square feet, our in-house design & development team can deliver a turnkey office solution.

Tailored for the Evolution of Office:

- "A La Carte" or "On Demand" Furniture Packages Available
- Plug & Play IT Packages Available



Scan here to learn more about our premium theme selects.



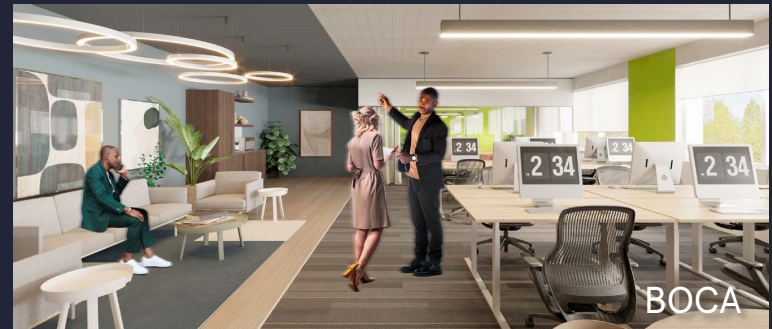
SCANDI



AZURE



TAHOE



BOCA

*Indicative of the look and feel (not the actual suite)