

455 Business Center Dr I Suite 200

Horsham, PA 19044

workspace
property trust

9,941 SF Available Now

Office Space



455 Business Center I Suite 200

Horsham, Pennsylvania, 19044

PROPERTY HIGHLIGHTS

AMENITIES

455 Business Center comes equipped with ample private offices with glass sidelights, an abundance of natural light provide by 3 sides of windows as well as a walkable 2nd floor suite off the atrium lobby.

TRANSPORTATION

Proximate access to 2 PA Turnpike access points, Routes 611 and 309, SEPTA Routes 80 & 310 with multiple stops throughout the Pennsylvania Business Campus.

Horsham Township's h.o.p.s shuttle service is also available to tenants, facilitating transportation between the SEPTA Regional Rail, the Horsham Business Center & the PA Lifestyle Campus.

TECHNOLOGY

Comcast, Verizon available throughout the PA Business Campus.

Building Owner: Workspace Property Trust

Total Building Size: 51,505

Ceiling Height: 8'6"



Updated Lobby



9,941 SF Available Now

Office Space



9,941 SF Available Now

455 Business Center | Suite 200

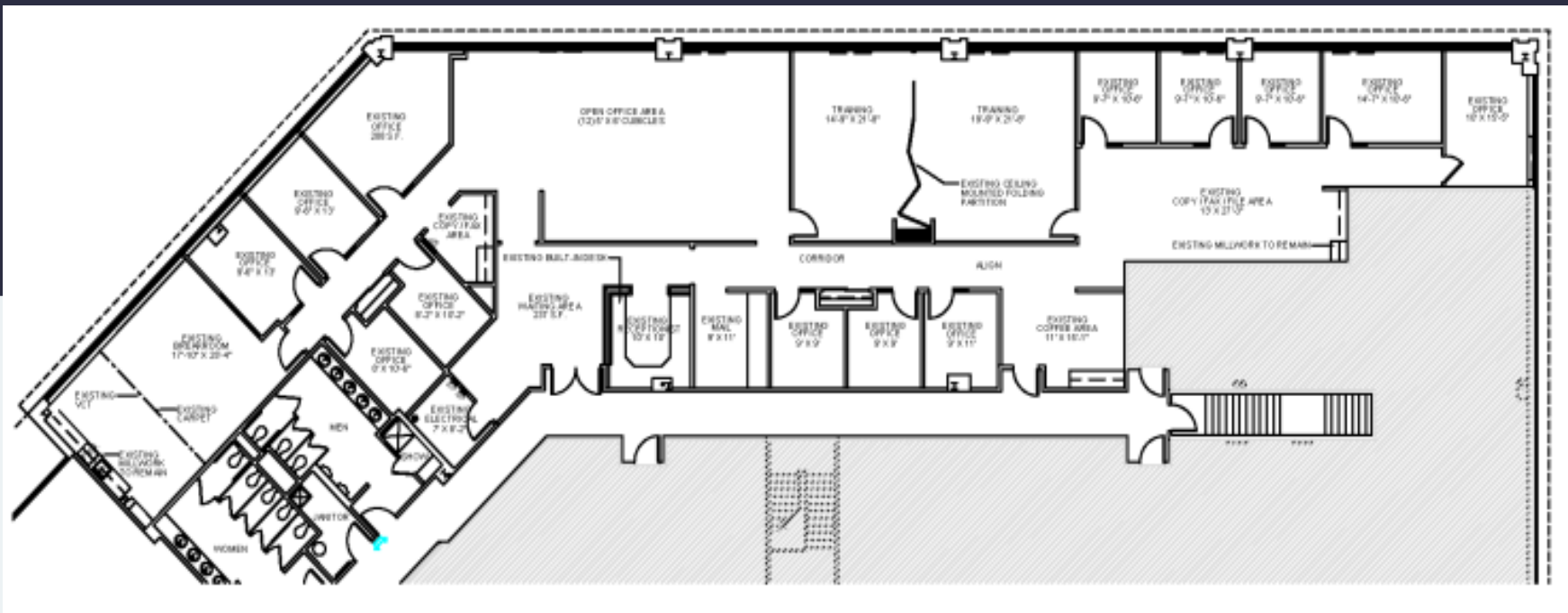
455 Business Center I Suite 200

Horsham, Pennsylvania 19044



9,941 SF Available for Lease

Office Space



Leasing Information

700 Dresher Road, Suite 150
(215) 328-2732
www.workspaceproperty.com

Doug Himmelreich
Director of Leasing
D.Himmelreich@workspaceproperty.com



Spaces for the Way Work Happens Today.

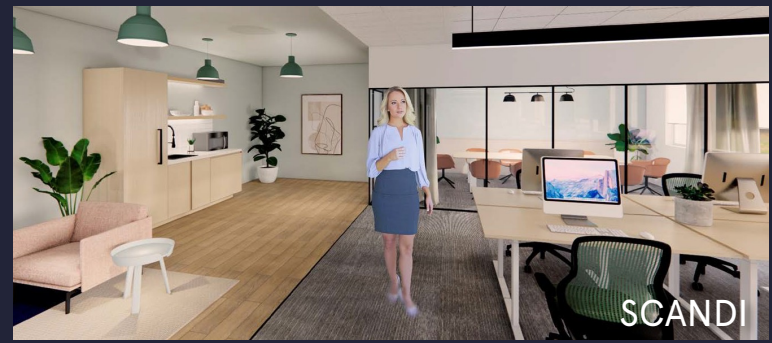
These beautifully designed themes inspire creativity and encourage productivity. Whether you are looking for 1,000 square feet or 100,000 square feet, our in-house design & development team can deliver a turnkey office solution.

Tailored for the Evolution of Office:

- "A La Carte" or "On Demand" Furniture Packages Available
- Plug & Play IT Packages Available



Scan here to learn more about our premium theme selects.



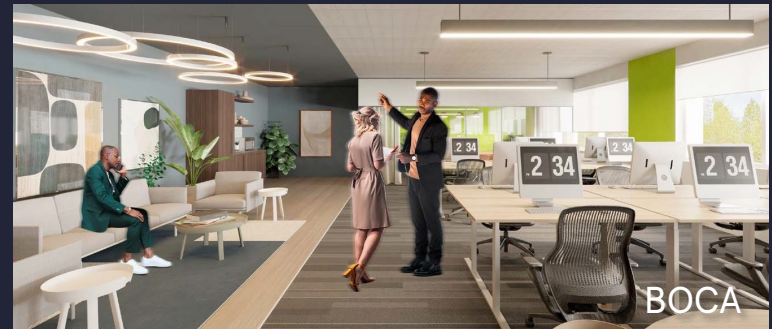
SCANDI



AZURE



TAHOE



BOCA

*Indicative of the look and feel (not the actual suite)