

506 Prudential Road | Entire Building

Horsham, PA 19044

workspace
property trust

18,200 SF Available Now

Office Space



Proposed Delivery in 2024

Proposed Front Façade | Scale: N.T.S

506 Prudential Road I Entire Building

Horsham, Pennsylvania, 19044

PROPERTY HIGHLIGHTS

AMENITIES

Ideal for office or lab/R&D user. Single-story office building with office furniture and workstations in place and available for plug and play user; monument signage on Dresher Road and Prudential Road provide ample visibility; enjoy immediate proximity to 3 brand new apartment developments, retail, and lifestyle centers.

TRANSPORTATION

3 minutes to PA Turnpike. Surrounded by recognizable corporate tenants.

Horsham Township's h.o.p.s shuttle service is also available to tenants, facilitating transportation between the SEPTA Regional Rail, the Horsham Business Center & the PA Lifestyle Campus.

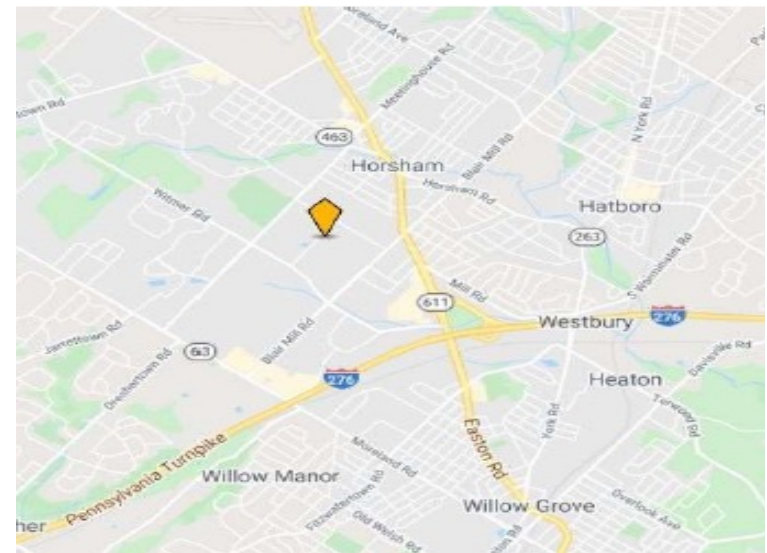
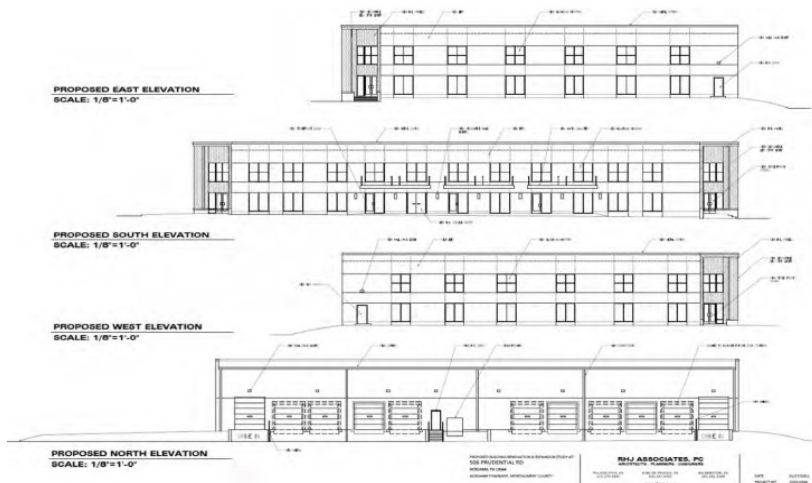
Building Owner: Workspace Property Trust

Total Building Size: 18,200

18,200 SF Available Now

Office Space





18,200 SF Available Now

506 Prudential Road | Entire Building

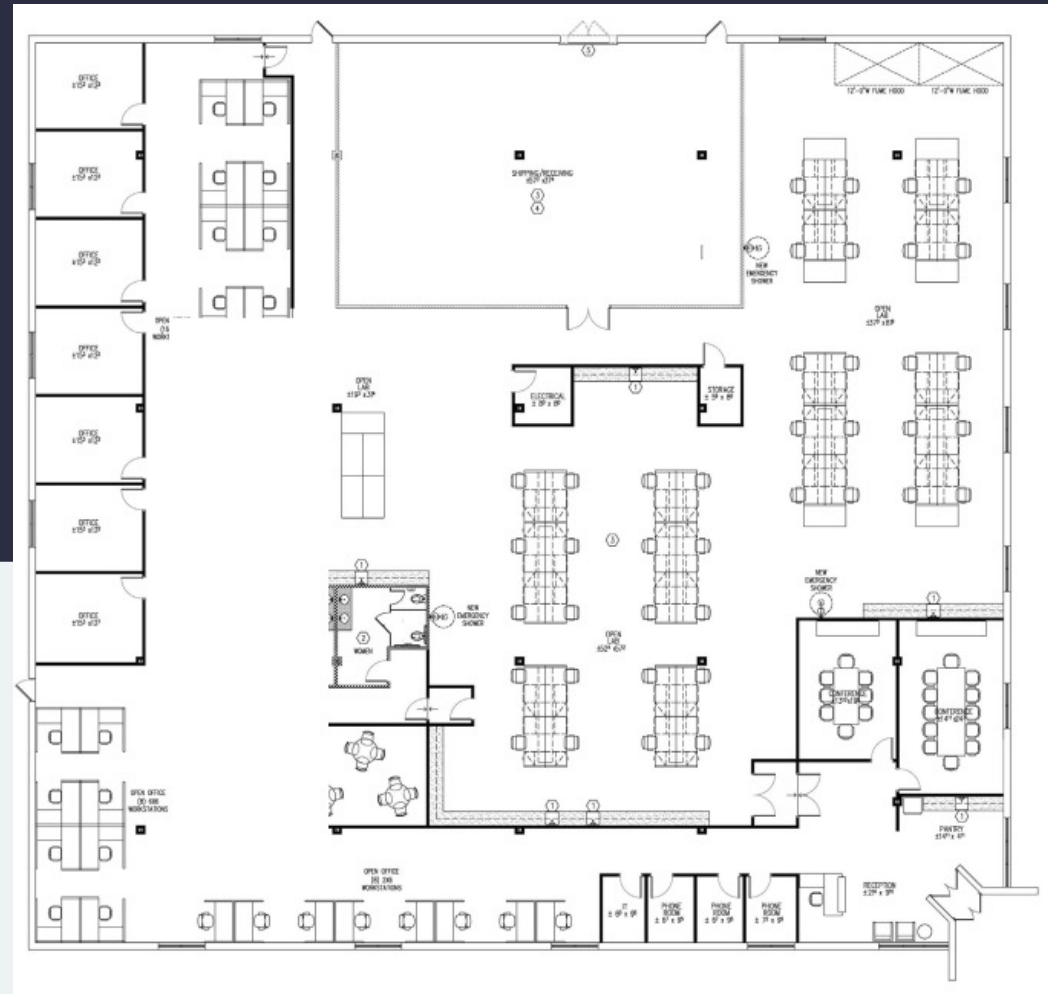
506 Prudential Road I Entire Building

Horsham, PA 19044

workspace
property trust

18,200 SF Available for Lease

Office Space



Leasing Information

700 Dresher Road, Suite 150
(215) 328-2732
www.workspaceproperty.com

Doug Himmelreich
Director of Leasing
D.Himmelreich@workspaceproperty.com



Spaces for the Way Work Happens Today.

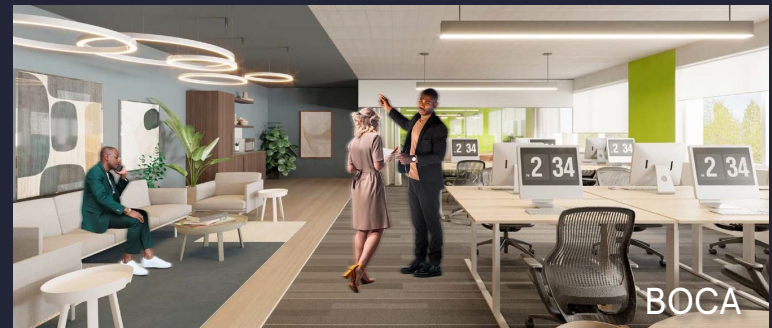
These beautifully designed themes inspire creativity and encourage productivity. Whether you are looking for 1,000 square feet or 100,000 square feet, our in-house design & development team can deliver a turnkey office solution.

Tailored for the Evolution of Office:

- "A La Carte" or "On Demand" Furniture Packages Available
- Plug & Play IT Packages Available



Scan here to learn more about our premium theme selects.



*Indicative of the look and feel (not the actual suite)