

507 Prudential Road | Suite 101
Horsham, PA 19044



4,703 SF Available Now

Office Space



507 Prudential Road | Suite 101

Horsham, PA 19044

Ideal for office or lab/R&D user. Single-story office building with backup generators. 10' finished ceilings and 3 sides of glass provide ample natural light; office furniture and workstations in place and available for plug and play user; monument signage on Dresher Road and Prudential Road provide ample visibility; enjoy immediate proximity to 3 brand new apartment developments, retail, and lifestyle centers. Access to the PA Turnpike is just 3 minutes away.

Property Highlights

Building Owner: Workspace Property Trust

Total Building Size: 100,710 Square Feet

Available Space: 4,703 Square Feet

Finished Ceiling Height: 10'

Power:

- Backup power provided by diesel generator



4,703 SF Available for Lease

Office/R&D Space

507 Prudential Road I Suite 101

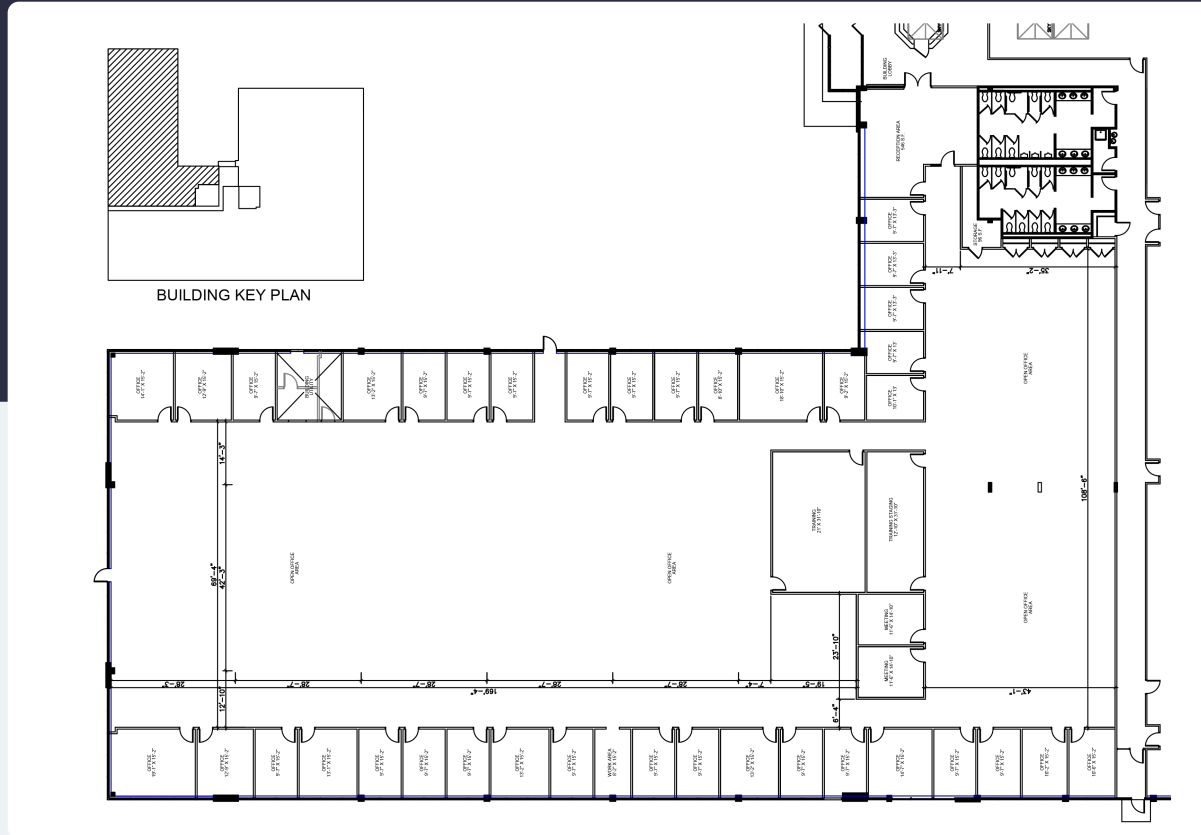
Horsham, PA 19044

workspace
property trust

4,703 SF Available for Lease

Office/R&D Space

CURRENT FLOOR
PLAN



Leasing Information

700 Dresher Road, Suite 150
(215) 328-2732
www.workspaceproperty.com

Doug Himmelreich
Director of Leasing
D.Himmelreich@workspaceproperty.com



Spaces for the Way Work Happens Today.

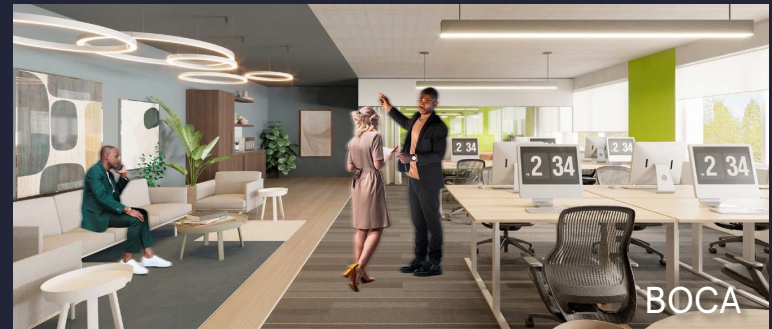
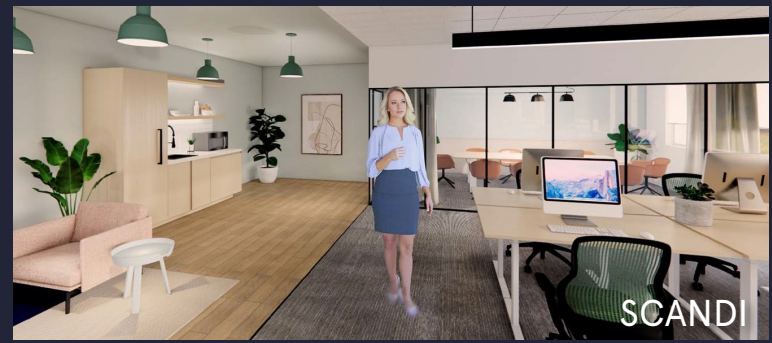
These beautifully designed themes inspire creativity and encourage productivity. Whether you are looking for 1,000 square feet or 100,000 square feet, our in-house design & development team can deliver a turnkey office solution.

Tailored for the Evolution of Office:

- "A La Carte" or "On Demand" Furniture Packages Available
- Plug & Play IT Packages Available



Scan here to learn more about our premium theme selects.



*Indicative of the look and feel (not the actual suite)