

66

# Perimeter Center East

Atlanta, GA 30346

workspace  
property trust

200,210 Available for Lease | 22,000 SF Floor Plates

Office Space



ACCESS TO  
State-of-the-art  
amenity center

DELIVERING 2024

# 66 Perimeter Center East

Atlanta, GA 30346

## PROPERTY HIGHLIGHTS

- State-of-the-art conference facilities
- On-site fitness center
- Full-service cafeteria
- Outdoor tenant lounge + deck
- MARTA 1.7 miles from office
- Two 2-Megawatt generators available for tenant use
- Access from I-285 and GA 400
- Minutes from retail and restaurants
- 24-hour building access + security
- Ample parking with covered parking deck
- Highly efficient 22,000 SF floor plates

## FIND YOUR SPACE WITH WORKSPACE

Workspace Property Trust is a leading, privately held, full-service commercial real estate company that provides multifaceted office solutions for today's modern companies. We own, lease, and manage an extensive portfolio of over 18 million square feet across more than 200 properties in thriving submarkets nationwide.



200,210 SF Available for Lease

# 64/66 Perimeter Center East | STATE-OF-THE-ART AMENITIES

Atlanta, GA 30346



# Delivering 2024

*Renderings*

*Not all amenities pictured*

## Leasing Information

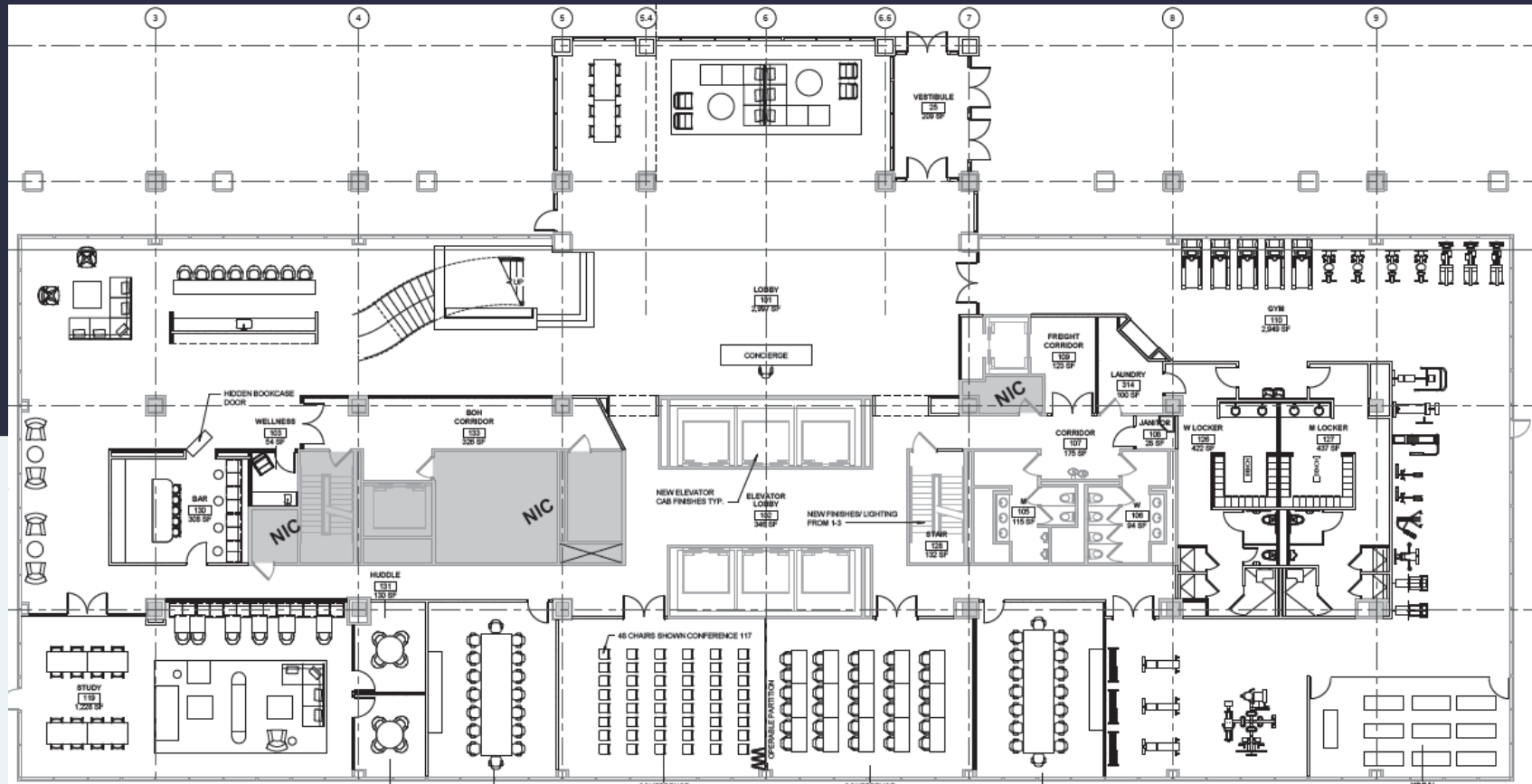
Wes Rudes  
Director of Leasing  
470.270.1275 | [wrudes@workspaceproperty.com](mailto:wrudes@workspaceproperty.com)

**workspace**  
property trust

# 64 Perimeter Center East | Floor 1

Atlanta, GA 30346

## SHARED AMENITIES FOR BOTH BUILDINGS



Leasing Information

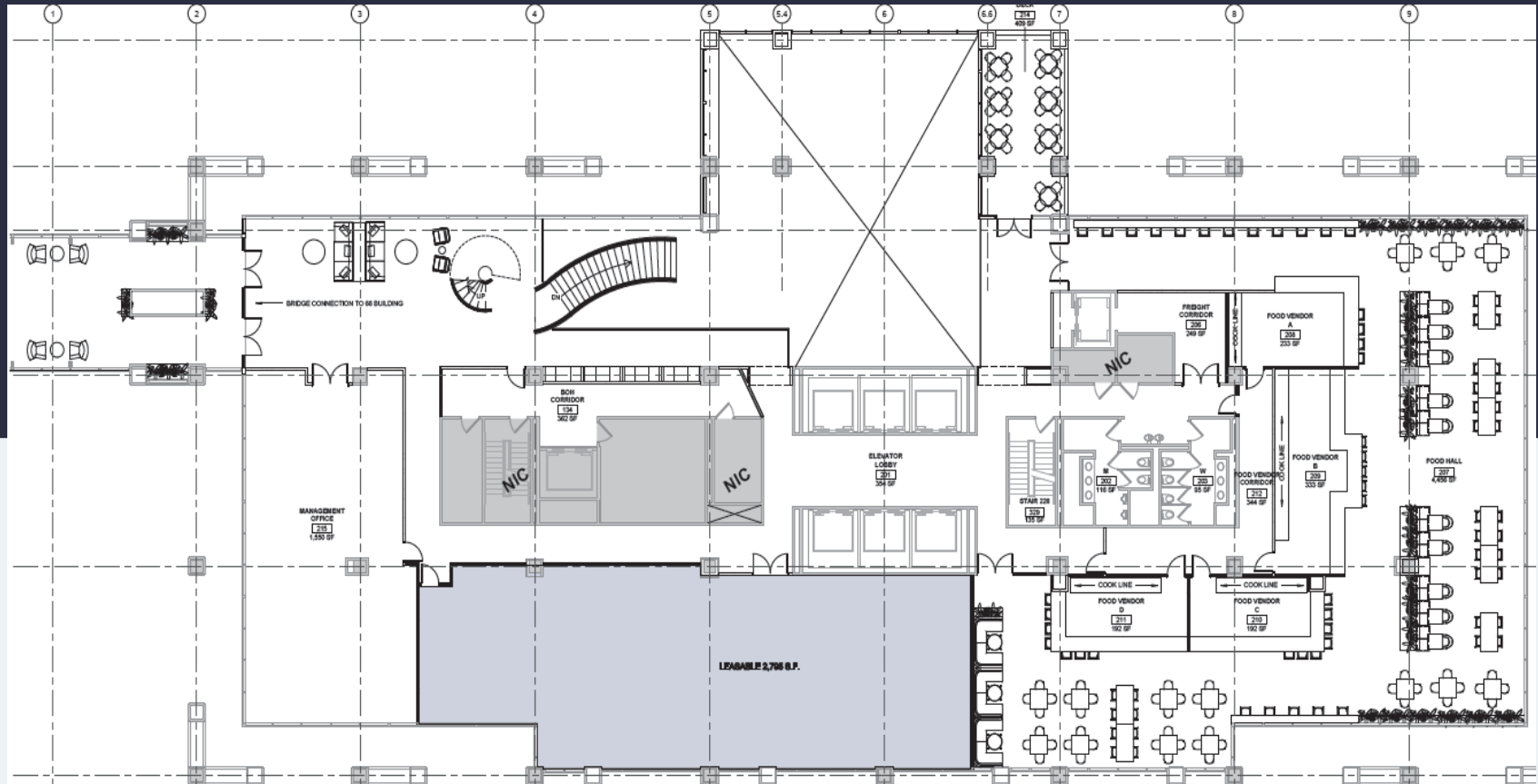
Wes Rudes  
Director of Leasing  
470.270.1275 | [wruedes@workspaceproperty.com](mailto:wruedes@workspaceproperty.com)

**workspace**  
property trust

# 64 Perimeter Center East | Floor 2

Atlanta, GA 30346

## SHARED AMENITIES FOR BOTH BUILDINGS



Leasing Information

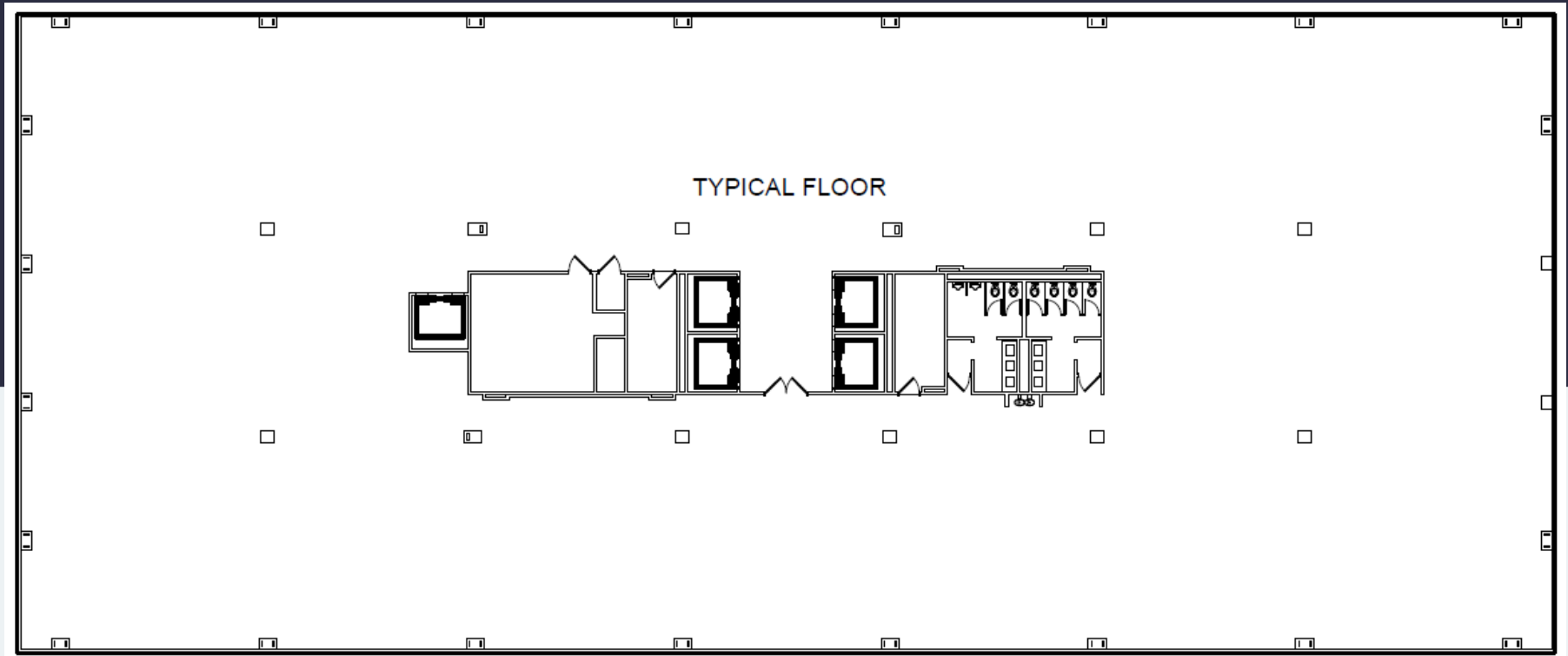
Wes Rudes  
Director of Leasing  
470.270.1275 | [wruedes@workspaceproperty.com](mailto:wruedes@workspaceproperty.com)

**workspace**  
property trust

# 66 Perimeter Center East | Typical Floor Plan

Atlanta, GA 30346

22,000 SF Available for Lease



Leasing Information

Wes Rudes  
Director of Leasing  
470.270.1275 | [wrudes@workspaceproperty.com](mailto:wrudes@workspaceproperty.com)

**workspace**  
property trust



# Spaces for the Way Work Happens Today.

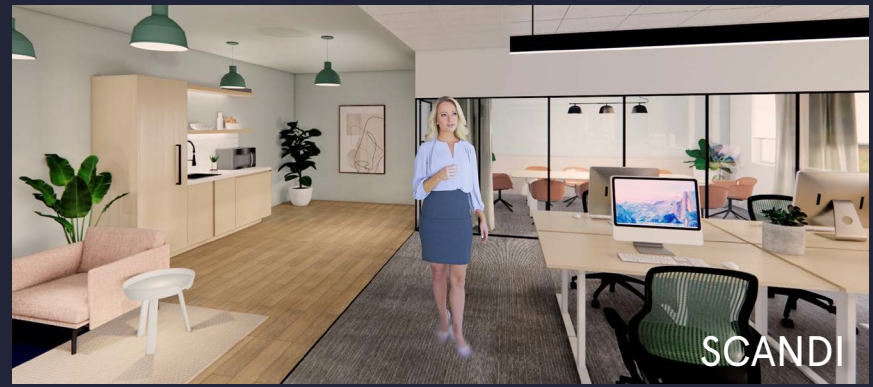
These beautifully designed themes inspire creativity and encourage productivity. Whether you are looking for 1,000 square feet or 100,000 square feet, our in-house design & development team can deliver a turnkey office solution.

## Tailored for the Evolution of Office:

- "A La Carte" or "On Demand" Furniture Packages Available
- Plug & Play IT Packages Available



Scan here to learn more about our premium theme selects.



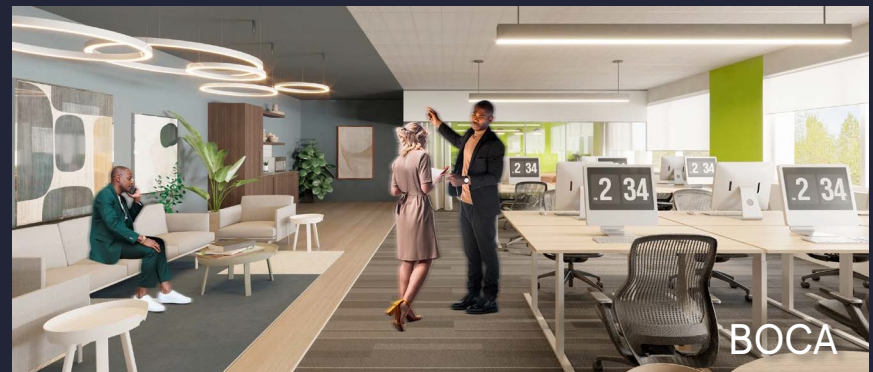
SCANDI



AZURE



TAHOE



BOCA

\*Indicative of the look and feel (not the actual suite)