

# Prairie View Office Bldg

7800 Equitable, Suite 150

Eden Prairie, MN 55344

**workspace**  
property trust

6,431 SF Available Now

Asking Rent: \$13.00/NNN

2024 OPEX: \$13.29/RSF





# 7800 Equitable Dr | Suite 150

Eden Prairie, MN 55344

## PROPERTY HIGHLIGHTS

### AMENITIES

Located within the southwest suburb of Eden Prairie, this office building has a contemporary feel, excellent glass lines, lower level sitting area, private storage, tempered parking and an exterior south-facing patio.

### TRANSPORTATION

Proximate access to Interstate 494 and Highways 212 & 5

### TECHNOLOGY

Comcast

### SUSTAINABILITY

Energy Star labeled building. Green initiatives in place by tenants and property management to include janitorial and recycling.

**Building Owner:** Workspace Property Trust

**Total Building Size:** 43,426 Square Feet

**Ceiling Height:** Finished 9'-11", Clear 12'-3"

**Docks:** 1 Dock Door

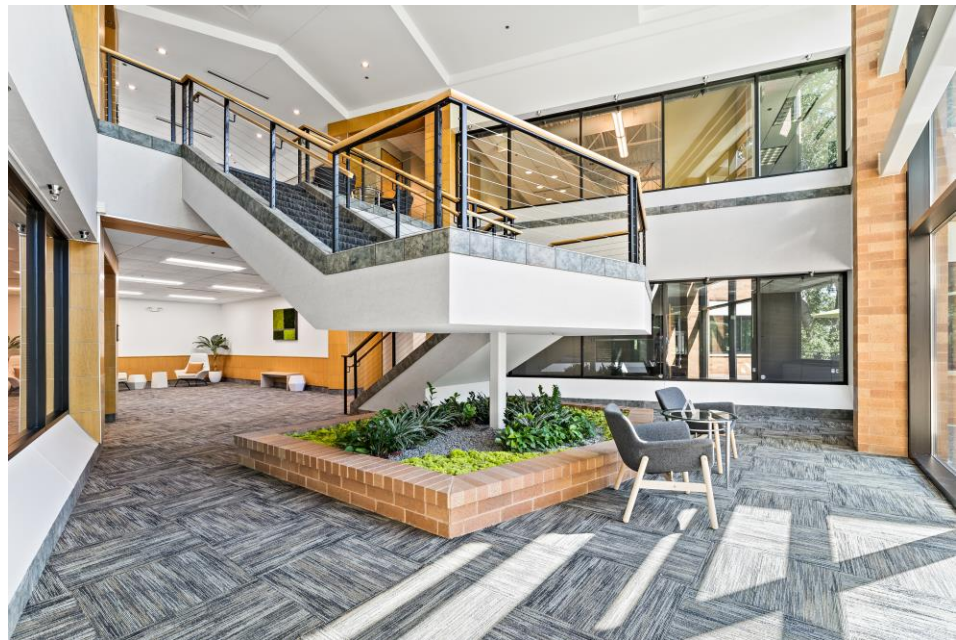
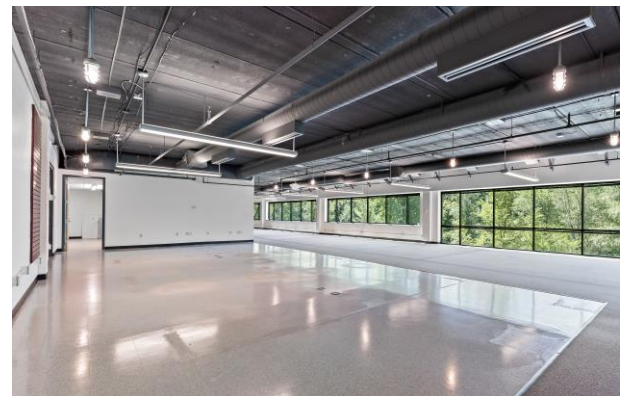
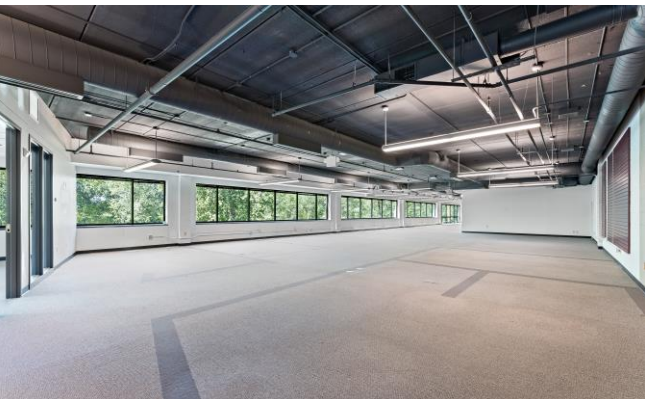
**Parking:** 4/1000



8,431 SF Available Now

Office Space





6,431 SF Available Now

Prairie View Office Building

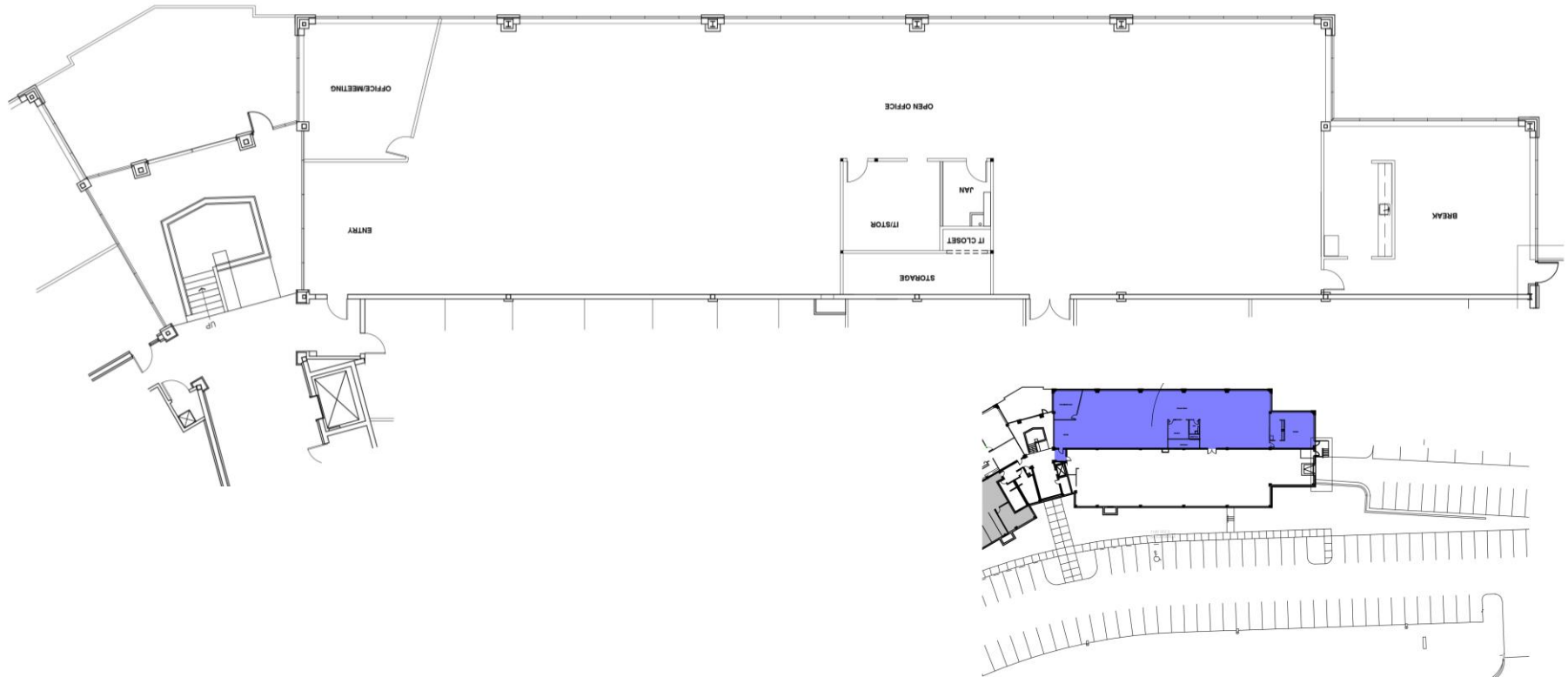
7800 Equitable Drive, Suite 150

# 7800 Equitable Dr | Suite 150

Eden Prairie, MN 55344



6,431 SF Available



## Leasing Information

6625 W. 78<sup>th</sup> Street, Bloomington, MN 55439  
(952) 426-4952  
[www.workspaceproperty.com](http://www.workspaceproperty.com)

Brad Butler  
VP, Regional Director  
[bbutler@workspaceproperty.com](mailto:bbutler@workspaceproperty.com)





# Spaces for the Way Work Happens Today.

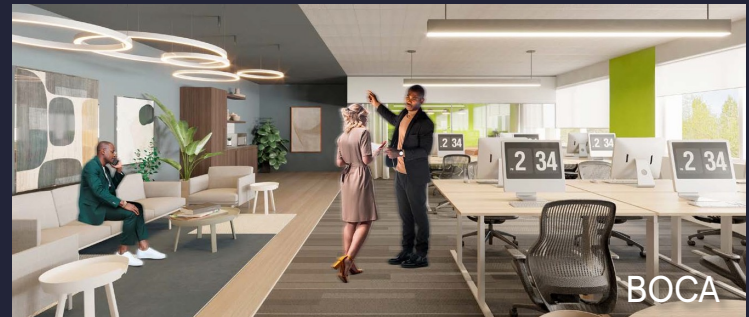
These beautifully designed themes inspire creativity and encourage productivity. Whether you are looking for 1,000 square feet or 100,000 square feet, our in-house design & development team can deliver a turnkey office solution.

## Tailored for the Evolution of Office:

- "A La Carte" or "On Demand" Furniture Packages Available
- Plug & Play IT Packages Available



**Scan here** to learn more about our premium theme selects.



\*Indicative of the look and feel (not the actual suite)