

# Paragon Business Center

## 951 Broken Sound Parkway Suite 190

Boca Raton, FL 33487

4,741 RSF Available Now

**workspace**  
property trust

Asking Rent: \$17.00/NNN  
2024 OPEX: \$8.12 RSF



# 951 Broken Sound Parkway Suite 190

Boca Raton, FL 33487

## PROPERTY HIGHLIGHTS

### AMENITIES

100% Tenant controlled with no shared spaces. Single story office/flex building in prestigious "The Park at Broken Sound". Featuring store front entrances with both individual and monument signage available, separately metered tenant-controlled electricity, zero loss factor, covered parking available, and roving security. Located in close proximity to numerous shopping centers, hotels, eateries, banking, big box retail, and fitness centers all within minutes from the campus.

### TRANSPORTATION

Immediate access to Interstate 95. Free shuttle service from Tri-Rail with The Park at Broken Sound Shuttles.

### TECHNOLOGY

AT&T, Level 3

### SUSTAINABILITY

Green initiatives in place by tenants and property management to include janitorial and recycling.

**Building Owner:** Workspace Property Trust

**Total Building Size:** 85,610 SF

**4,741 SF Available Now**



Front Entrance



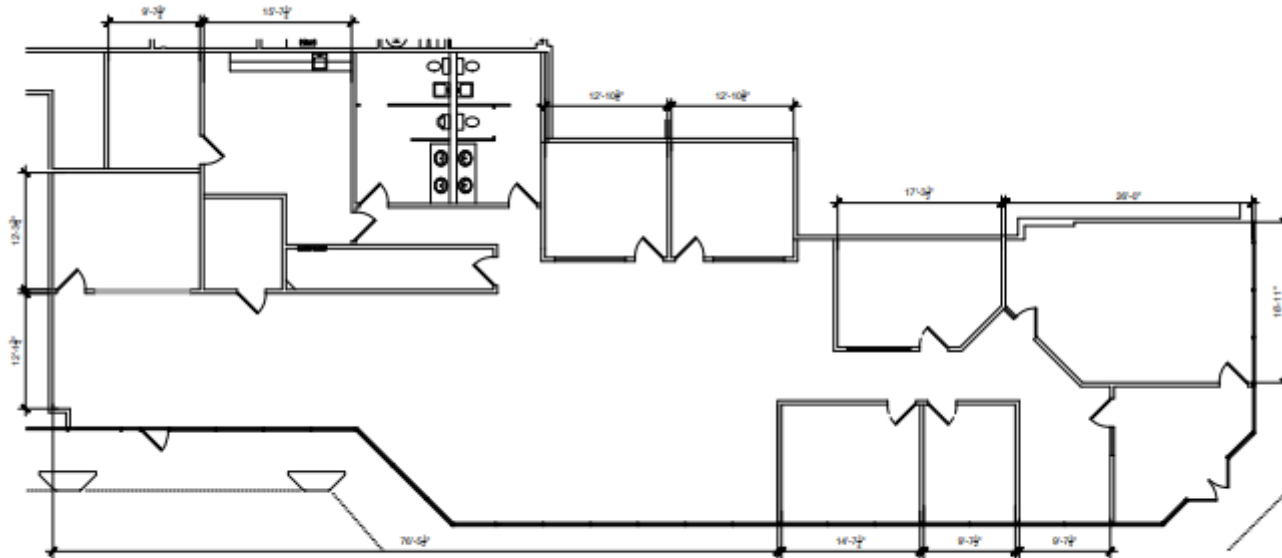
Sideview

# 951 Broken Sound Parkway Suite 190

Boca Raton, Florida 33487



## 4,741 RSF Available Now



## Leasing Information

777 Yamato Road, Suite 105, Boca Raton, FL, 33431  
(954) 391-5503  
[www.workspaceproperty.com](http://www.workspaceproperty.com)

Mike, Nathanson  
Director of Leasing  
[mnathanson@workspaceproperty.com](mailto:mnathanson@workspaceproperty.com)



# Spaces for the Way Work Happens Today.

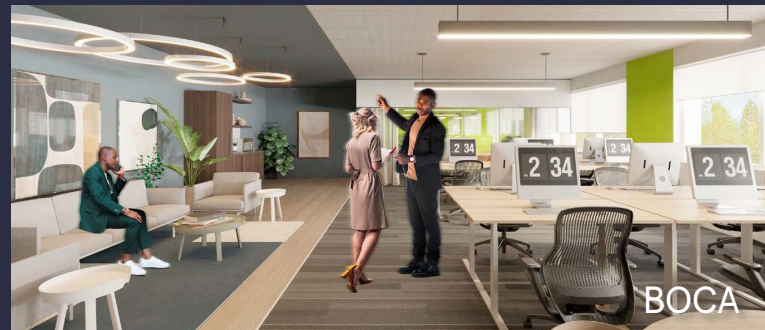
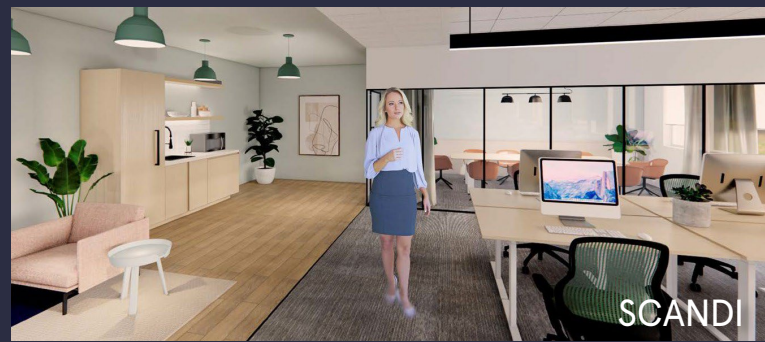
These beautifully designed themes inspire creativity and encourage productivity. Whether you are looking for 1,000 square feet or 100,000 square feet, our in-house design & development team can deliver a turnkey office solution.

## Tailored for the Evolution of Office:

- "A La Carte" or "On Demand" Furniture Packages Available
- Plug & Play IT Packages Available



Scan here to learn more about our premium theme selects.



\*Indicative of the look and feel (not the actual suite)