

Southwest Crossing

10400 Viking Drive, Suites 500-560

Eden Prairie, MN 55344

workspace  
property trust

25,295 SF Available Now

Asking Rent: \$17.50/NNN  
2024 OPEX: \$14.27/RSF



# 10400 Viking Drl Suites 500-560

Eden Prairie, MN 55344

## PROPERTY HIGHLIGHTS

### AMENITIES

Lakeside patio with access to walking trails, a beautifully appointed lobby, casual meeting areas, workout room, locker rooms with shower facilities, 40-person Training room, Wi-Fi, micro cafe, covered parking, heated garage and on-site Fed-Ex.

### TRANSPORTATION

Proximate access to I-494, Highways 169 and 100

### TECHNOLOGY

Comcast

### SUSTAINABILITY

Energy Star labeled building. Green initiatives in place by tenants and property management to include day-lighting, water conservation, janitorial and recycling.

**Building Owner:** Workspace Property Trust

**Total Building Size:** 167,172 SF

**Ceiling Height:** 9'-11"

**Parking:** 4.7/1000



Atrium



Atrium

25,295 SF Available Now

Office Space

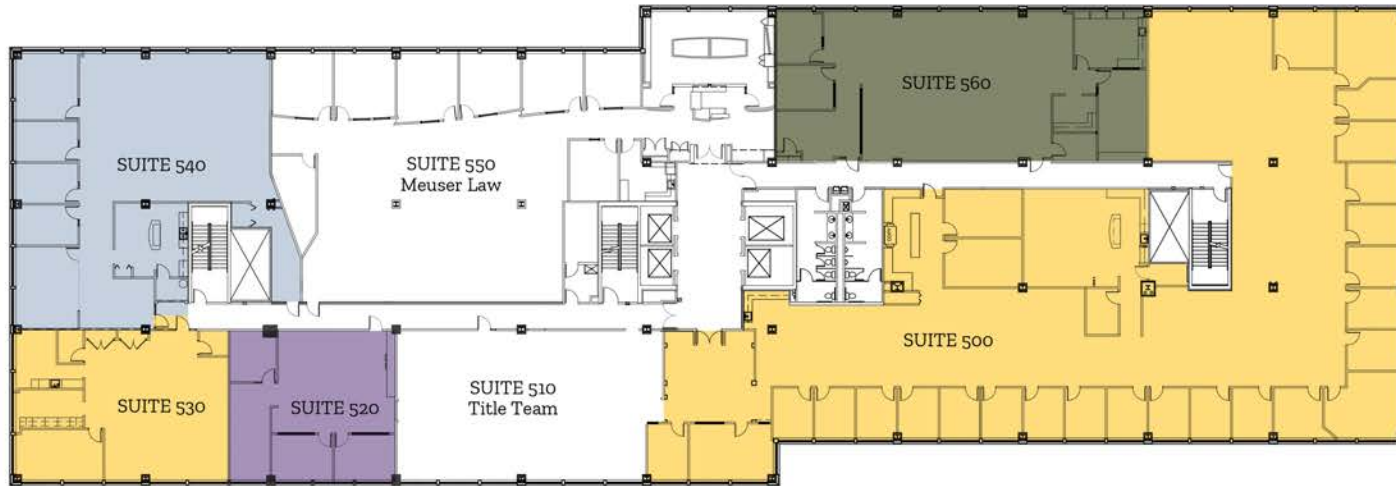


# 10400 Viking Drive | Suites 500-560

Eden Prairie, MN 55344

**workspace**  
property trust

## 25,295 SF Available Now



### 1 FLOOR PLAN

1	SUITE 500	13,421 SFR
1	SUITE 520	1,635 SFR
	SUITE 530	2,198 SFR
	SUITE 540	4,294 SFR
	SUITE 560	3,747 SFR
	TOTAL	25,295 SFR



SCALE: 1/32" = 1'-0"

## Leasing Information

6625 W. 78<sup>th</sup> Street, Bloomington, MN 55439  
612-426-4033  
[www.workspaceproperty.com](http://www.workspaceproperty.com)

Brad Butler  
VP, Regional Director  
[bbutler@workspaceproperty.com](mailto:bbutler@workspaceproperty.com)



# Spaces for the Way Work Happens Today.

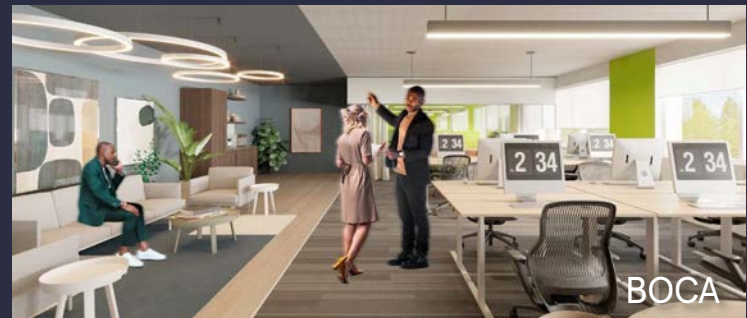
These beautifully designed themes inspire creativity and encourage productivity. Whether you are looking for 1,000 square feet or 100,000 square feet, our in-house design & development team can deliver a turnkey office solution.

## Tailored for the Evolution of Office:

- “A La Carte” or “On Demand” Furniture Packages Available
- Plug & Play IT Packages Available



**Scan here** to learn more about our premium theme selects.



\*Indicative of the look and feel (not the actual suite)