

3102 Cherry Palm Drive Suite 150

Tampa, FL 33619

workspace
property trust

2,176 SF Available Now

Asking Rent: \$14.25 NNN



3102 Cherry Palm Drive Suite 150

Tampa, Florida 33619

PROPERTY HIGHLIGHTS

AMENITIES

Abundant parking. Generous landscaping with mature trees. On-site deli, close proximity to hotels, restaurants, and retail shops..

TRANSPORTATION

Hart stop at Falkenburg Rd and Broadway Ave. In the heart of the I-75 Corridor with quick access to US Hwy 301, S, I-4, and the Selmon Expressway

TECHNOLOGY

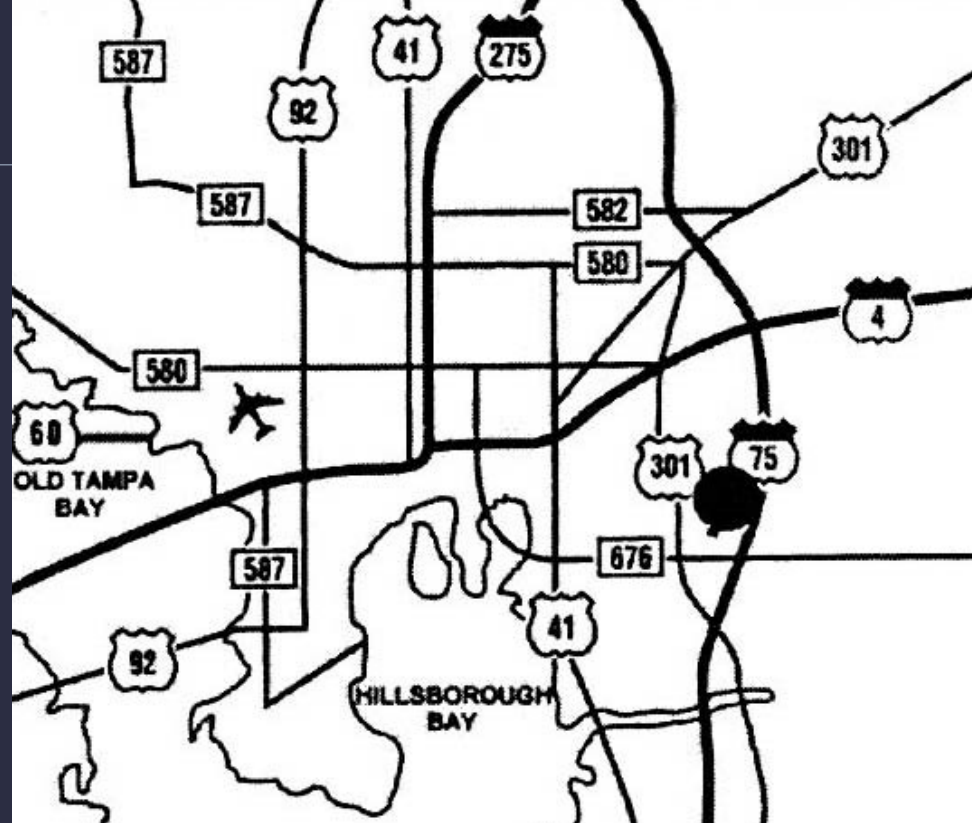
Spectrum and Fiber Net

SUSTAINABILITY

Recycling receptacles on-site

Building Owner: Workspace Property Trust

2,176 SF Available Now

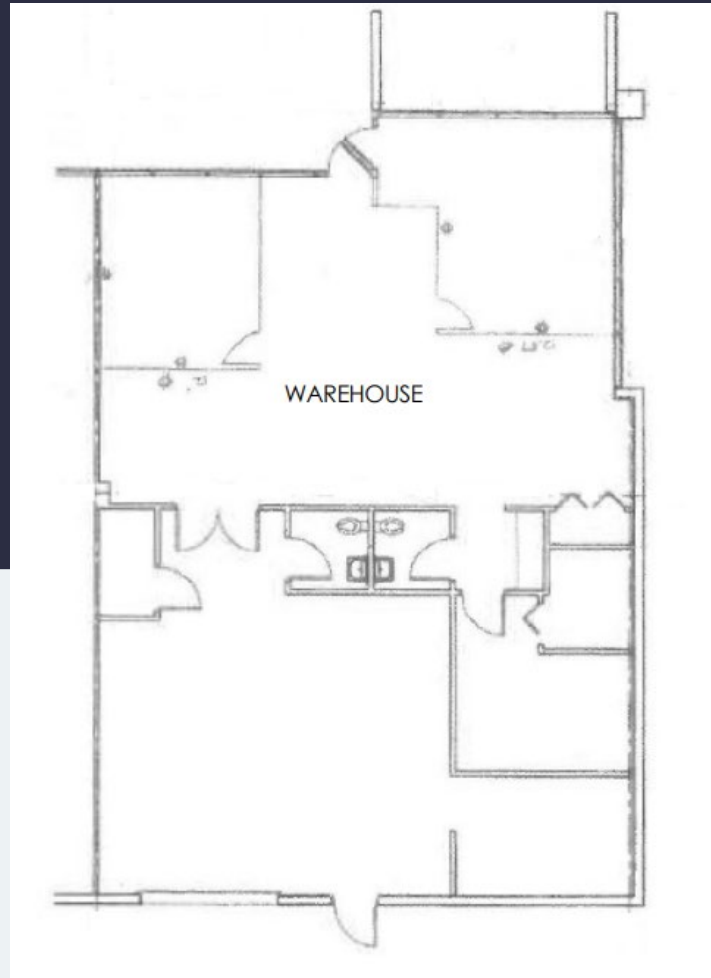


3102 Cherry Palm Dr Suite 150

Tampa, Florida 33619



2,176 SF Available Now



Leasing Information

4631 Woodland Corporate Boulevard, Suite 209, Tampa, FL 33614
813-889-3733
www.workspaceproperty.com

Jeffrey, Lanning
Regional Director
jlanning@workspaceproperty.com

Spaces for the Way Work Happens Today.

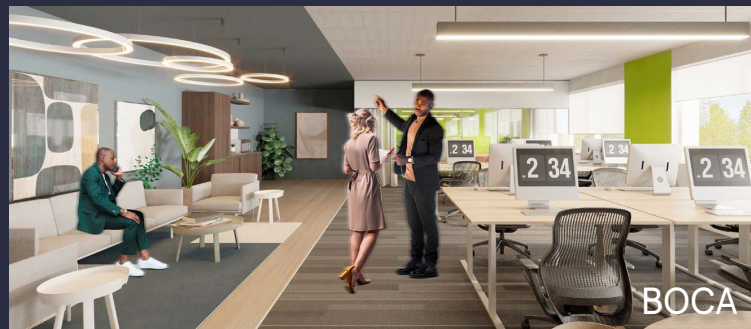
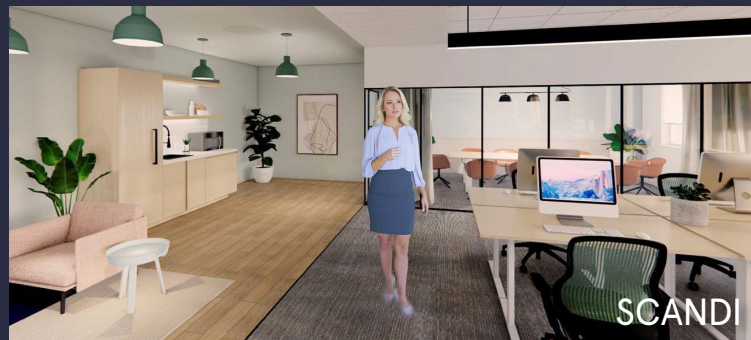
These beautifully designed themes inspire creativity and encourage productivity. Whether you are looking for 1,000 square feet or 100,000 square feet, our in-house design & development team can deliver a turnkey office solution.

Tailored for the Evolution of Office:

- “A La Carte” or “On Demand” Furniture Packages Available
- Plug & Play IT Packages Available



Scan here to learn more about our premium theme selects.



*Indicative of the look and feel (not the actual suite)