

# 3104 Cherry Palm Drive Suite 240

Tampa, FL 33614

**workspace**  
property trust

2,000 SF Available Now

Asking Rent: \$14.00 NNN





# 3104 Cherry Palm Drive Suite 240

Tampa, Florida 33614

## PROPERTY HIGHLIGHTS

### AMENITIES

Abundant parking. Generous landscaping with mature trees. On-site deli, close proximity to hotels, restaurants, and retail shops.

### TRANSPORTATION

Hart stop at Falkenburg Rd and Broadway Ave. In the heart of the I-75 Corridor with quick access to US Hwy 301, S, I-4, and the Selmon Expressway.

### TECHNOLOGY

Spectrum and Fiber Net.

### SUSTAINABILITY

Recycling receptacles on-site.

**Building Owner:** WorkspaceProperty Trust



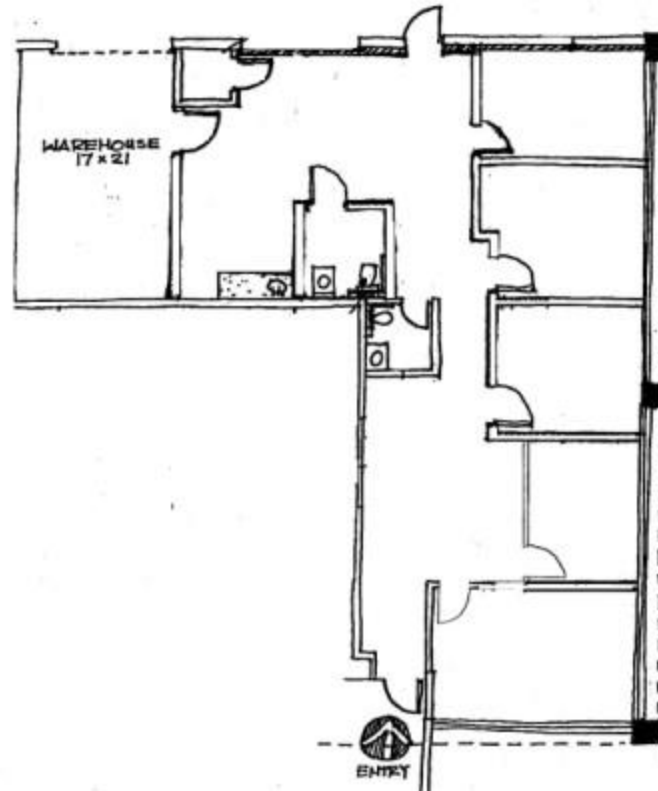
2,000 SF Available Now

# 3104 Cherry Palm Drive Suite 240

Tampa, Florida 33614

## 2,000 SF Available Now

- One-story flex/office building
- Grade level loading capabilities
- \*\$4.79 Estimated Operating Expenses
- Tenant pays own Electric and Janitorial
- Above average parking ratio 4-5/1,000



## Leasing Information

4631 Woodland Corporate Boulevard, Suite 209, Tampa, FL 33614  
813-889-3733  
[www.workspaceproperty.com](http://www.workspaceproperty.com)

Jeffrey, Lanning  
Regional Director  
[jlanning@workspaceproperty.com](mailto:jlanning@workspaceproperty.com)

# Spaces for the Way Work Happens Today.

These beautifully designed themes inspire creativity and encourage productivity. Whether you are looking for 1,000 square feet or 100,000 square feet, our in-house design & development team can deliver a turnkey office solution.

## Tailored for the Evolution of Office:

- “A La Carte” or “On Demand” Furniture Packages Available
- Plug & Play IT Packages Available



Scan here to learn more about our premium theme selects.

