

3104 Cherry Palm Drive Suite 250

Tampa, FL 33614

workspace
property trust

2,072 SF Available Now

Asking Rent: \$14.00 NNN



3104 Cherry Palm Drive Suite 250

Tampa, Florida 33614

PROPERTY HIGHLIGHTS

AMENITIES

Abundant parking. Generous landscaping with mature trees. On-site deli, close proximity to hotels, restaurants, and retail shops.

TRANSPORTATION

Hart stop at Falkenburg Rd and Broadway Ave. In the heart of the I-75 Corridor with quick access to US Hwy 301, S, I-4, and the Selmon Expressway.

TECHNOLOGY

Spectrum and Fiber Net.

SUSTAINABILITY

Recycling receptacles on-site.

Building Owner: Workspace Property Trust

2,072 SF Available Now



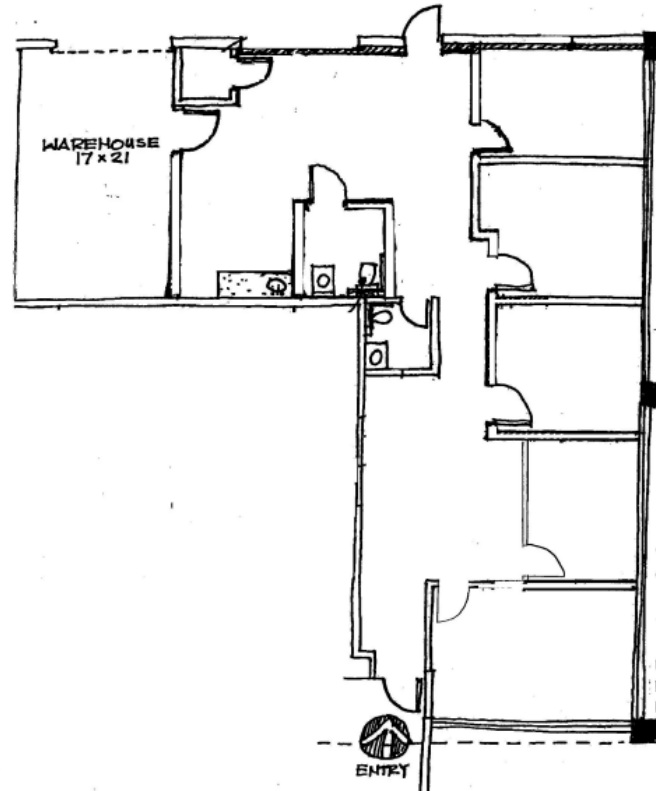
3104 Cherry Palm Drive Suite 250

Tampa, Florida 33614

workspace
property trust

2,072 SF Available Now

- One-story flex/office building
- Grade level loading capabilities
- \$4.79 Estimated Operating Expenses
- Tenant pays own Electric and Janitorial
- Above average parking ratio 4-5/1,000



Leasing Information

4631 Woodland Corporate Boulevard, Suite 209, Tampa, FL 33614
813-889-3733
www.workspaceproperty.com

Jeffrey, Lanning
Regional Director
jlanning@workspaceproperty.com

Spaces for the Way Work Happens Today.

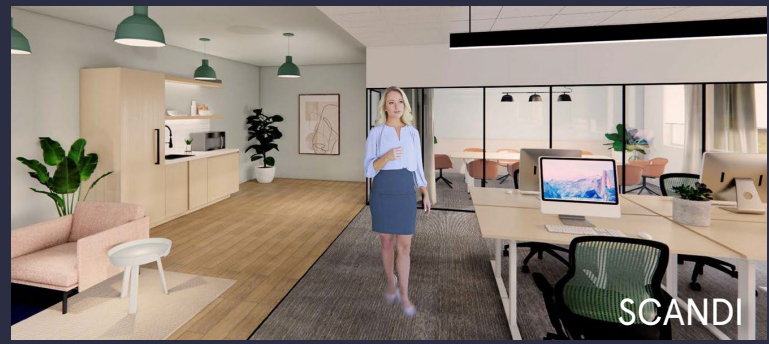
These beautifully designed themes inspire creativity and encourage productivity. Whether you are looking for 1,000 square feet or 100,000 square feet, our in-house design & development team can deliver a turnkey office solution.

Tailored for the Evolution of Office:

- "A La Carte" or "On Demand" Furniture Packages Available
- Plug & Play IT Packages Available



Scan here to learn more about our premium theme selects.



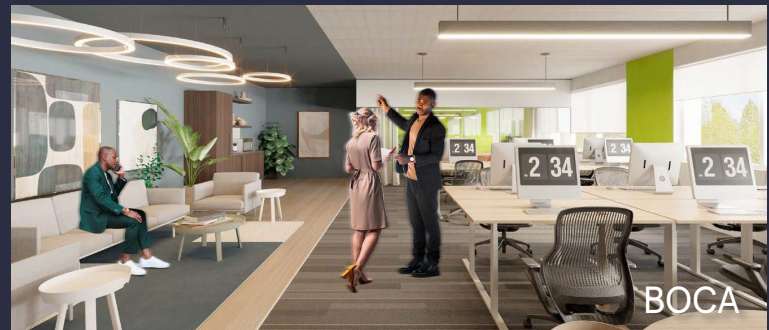
SCANDI



AZURE



TAHOE



BOCA

*Indicative of the look and feel (not the actual suite)