

Normandale Ponds

6161 American Blvd, Suite 160

Bloomington, MN 55438

workspace
property trust

19,553 SF Available Now

Asking Rent: \$14.00/NNN
2024 OPEX: \$12.90/RSF



6161 American Blvd | Suite 160

Bloomington, MN 55438

PROPERTY HIGHLIGHTS

AMENITIES

Strategically located at the intersection of I-494 between Normandale Blvd. and Bush Lake Road, this single-story office space offers ample space for conference rooms, and a variety of private offices and open areas. Proximate to restaurants, apartments, hotels and retail shops.

TRANSPORTATION

Interstate 494 frontage with easy access I-494, Hwy 100 & 169

TECHNOLOGY

Comcast

SUSTAINABILITY

Energy Star labeled building. Green initiatives in place by tenants and property management to include janitorial and recycling.

Building Owner: Workspace Property Trust

Total Building Size: 36,827 Square Feet

Ceiling Height: Finished 10', Clear 13'-7"

Parking: 4/1000



19,553 SF Available Now

Office Space



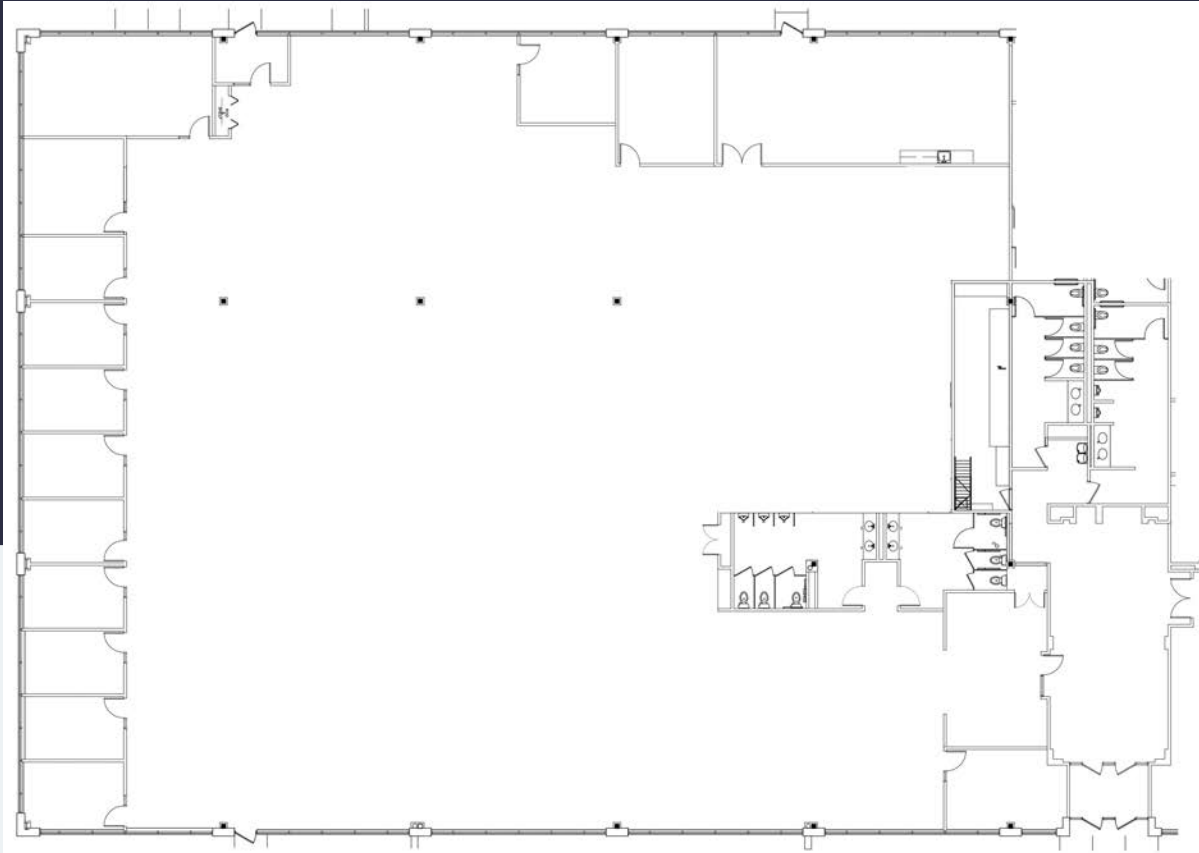
Normandale Ponds Office Building

6161 American Blvd, Suite 160

6161 American Blvd| Suite 160

Bloomington, MN 55438

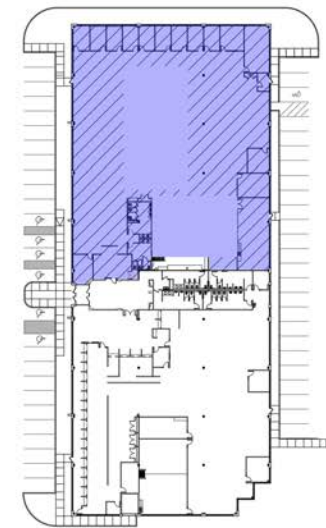
workspace
property trust



FLOOR PLAN 19,553 SFR



SCALE: 1/16" = 1'-0"



KEY PLAN



SCALE: NOT TO SCALE

Leasing Information

6625 W. 78th Street, Bloomington, MN 55439
952-292-4952
www.workspaceproperty.com

Brad Butler
VP, Regional Director
bbutler@workspaceproperty.com



Spaces for the Way Work Happens Today.

These beautifully designed themes inspire creativity and encourage productivity. Whether you are looking for 1,000 square feet or 100,000 square feet, our in-house design & development team can deliver a turnkey office solution.

Tailored for the Evolution of Office:

- “A La Carte” or “On Demand” Furniture Packages Available
- Plug & Play IT Packages Available



Scan here to learn more about our premium theme selects.



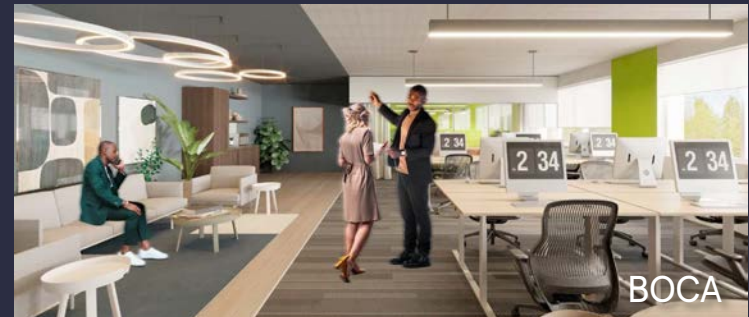
SCANDI



AZURE



TAHOE



BOCA

*Indicative of the look and feel (not the actual suite)