

64

Perimeter Center East

Atlanta, GA 30346

workspace
property trust

384,575 Available for Lease | Divisions of 1,009–25,000

Office Space

MAJOR RENOVATIONS

Including state-of-the-art
amenity center

DELIVERING 2024



64 Perimeter Center East

Atlanta, GA 30346

PROPERTY HIGHLIGHTS

- Turnkey Data center available with up to 10 megawatts of power existing, multiple fiber providers and abundant backup power
- State-of-the-art conference facilities
- On-site fitness center
- Full-service cafeteria
- Outdoor tenant lounge + deck
- MARTA 1.7 miles from office
- Access from I-285 and GA 400
- Minutes from retail and restaurants
- Two 2-Megawatt generators available for tenant use
- 24-hour building access + security
- Ample parking with covered parking deck
- Highly efficient 23,000 & 25,000 SF floor plates

FIND YOUR SPACE WITH WORKSPACE

Workspace Property Trust is a leading, privately held, full-service commercial real estate company that provides multifaceted office solutions for today's modern companies. We own, lease, and manage an extensive portfolio of over 18 million square feet across more than 200 properties in thriving submarkets nationwide.



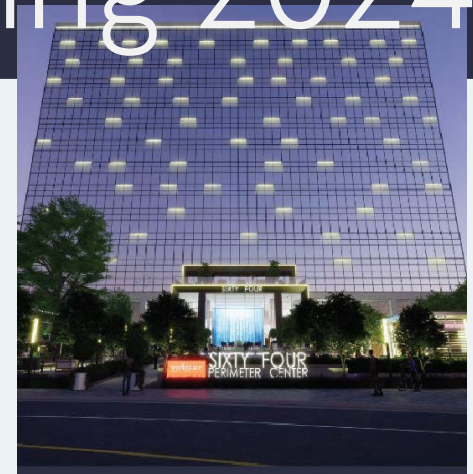
384,575 SF Available for Lease

64 Perimeter Center East | STATE-OF-THE-ART AMENITIES

Atlanta, GA 30346



Delivering 2024



Renderings

Leasing Information

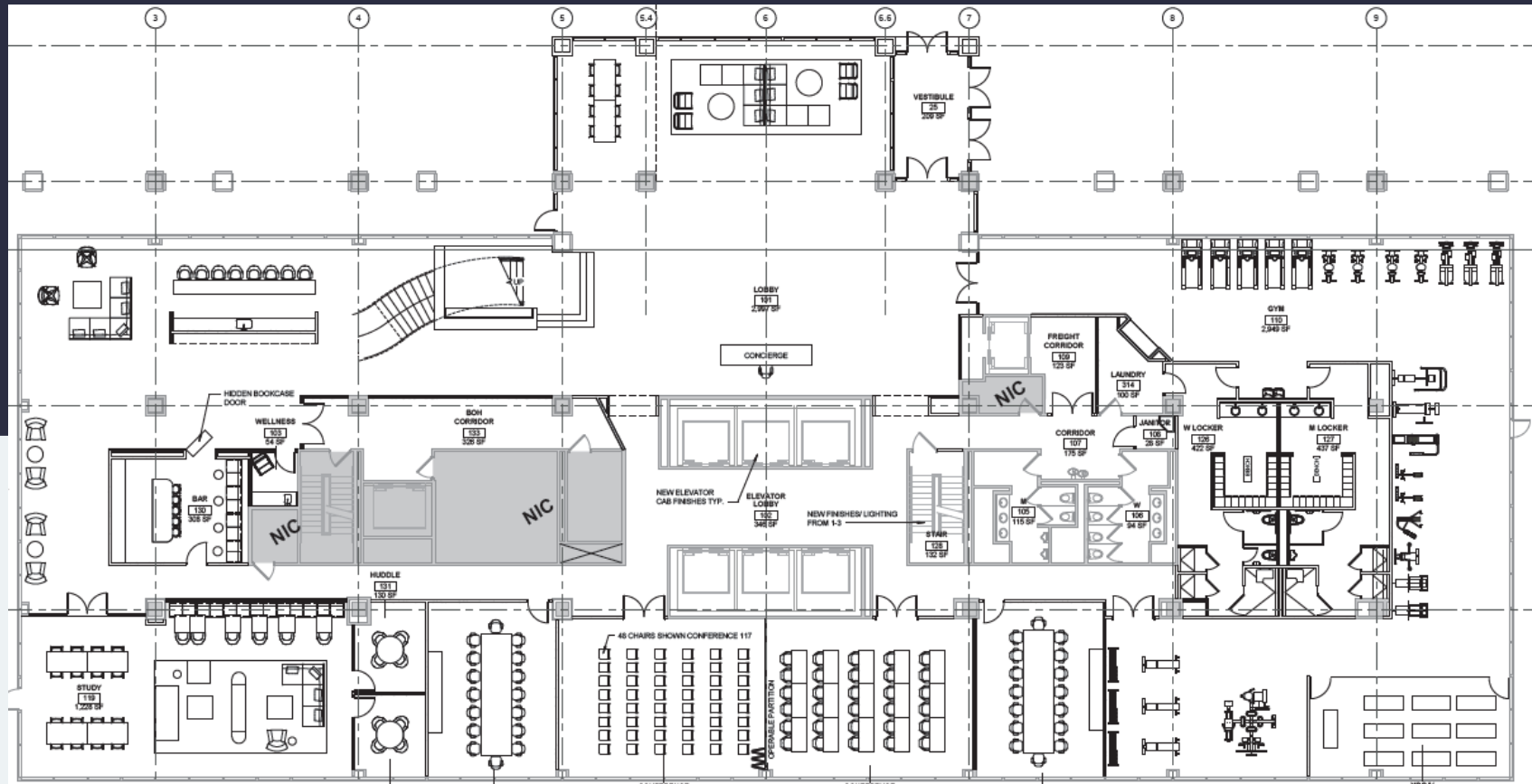
Wes Rudes
Director of Leasing
470.270.1275 | wruedes@workspaceproperty.com

workspace
property trust

64 Perimeter Center East | Floor 1

Atlanta, GA 30346

AMENITIES



Leasing Information

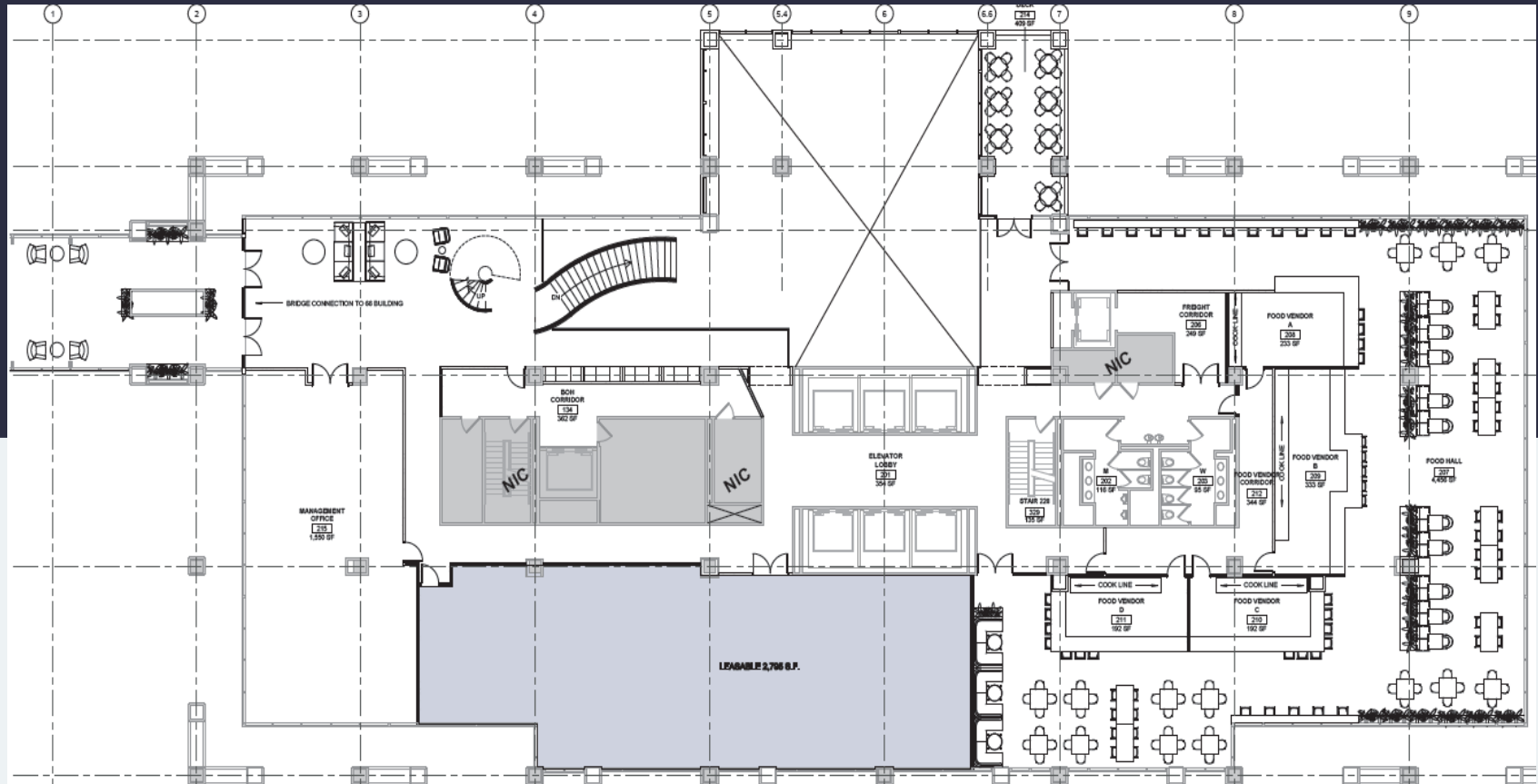
Wes Rudes
Director of Leasing
470.270.1275 | wruedes@workspaceproperty.com

workspace
property trust

64 Perimeter Center East | Floor 2

Atlanta, GA 30346

ADDITIONAL AMENITIES + 2,795 SF Available for Lease



Leasing Information

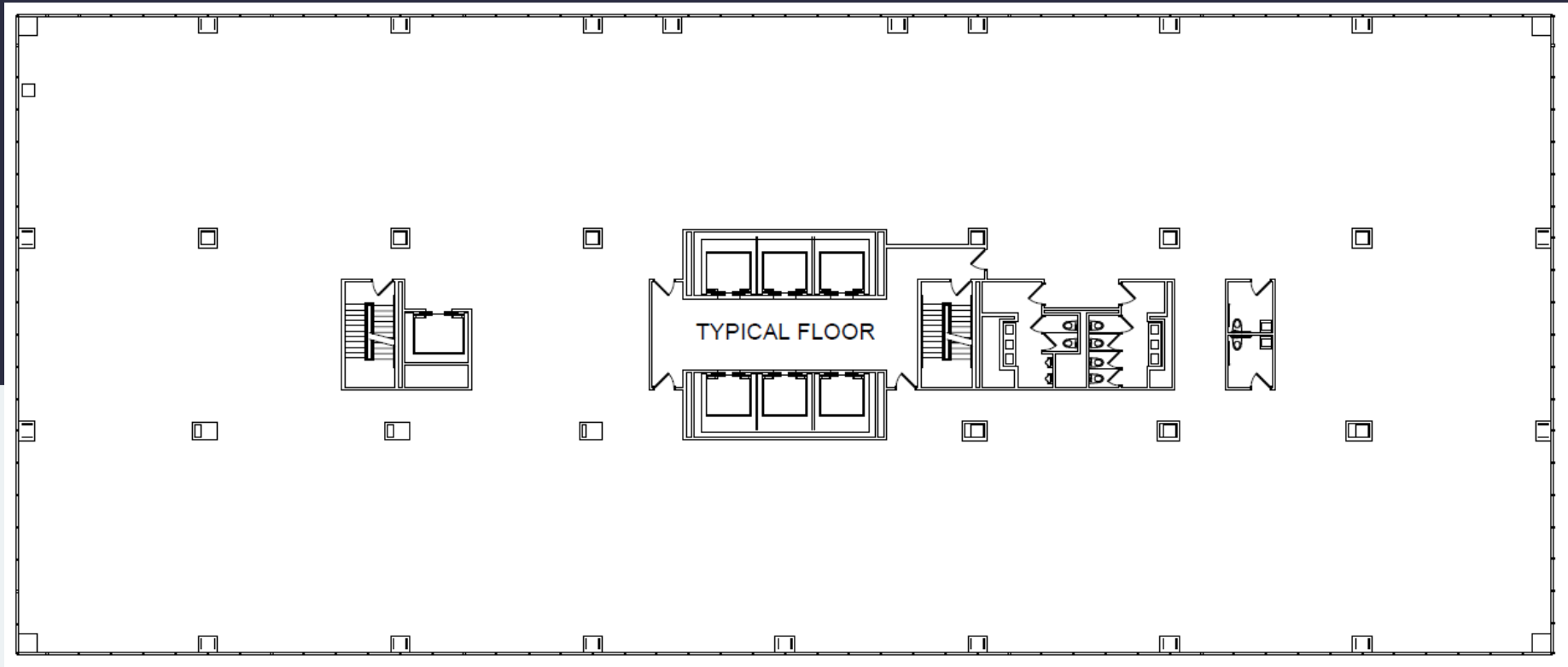
Wes Rudes
Director of Leasing
470.270.1275 | wruedes@workspaceproperty.com

workspace
property trust

64 Perimeter Center East | Typical Floor Plan

Atlanta, GA 30346

25,000 SF Available for Lease



Leasing Information

Wes Rudes
Director of Leasing
470.270.1275 | wrudes@workspaceproperty.com

workspace
property trust