

ONE LIBERTY CORP. CENTER

6625 W. 78<sup>th</sup> Street, Suite 200

Bloomington, MN 55439

workspace  
property trust

5,692 SF Available Now

Asking Rent: \$18.00/NNN

2024 OPEX: \$14.04/RSF



# 6625 W. 78<sup>TH</sup> STREET, Suite 200

Bloomington, MN 55439

## PROPERTY HIGHLIGHTS

### AMENITIES

Property amenities include a full-service cafe, lakeside walking trails, a beautifully appointed lobby with casual meeting areas, a workout room with private showers and a 50-person Training room.

### TRANSPORTATION

Proximate access to Interstate 494 and highways 100 and 169.

### TECHNOLOGY

Comcast

### SUSTAINABILITY

Energy Star labeled building. Green initiatives in place by tenants and property management to include water conservation, day lighting, janitorial and recycling.

**Building Owner:** Workspace Property Trust

**Total Building Size:** 167,172 SF

**Ceiling Height:** 10' Finished

**Parking:** 4.1/1000



Atrium

5,692 SF Available Now

Office Space



Fitness Room



Training Room



Café Lounge



Café 38



Open Office



Open Office



Kitchen

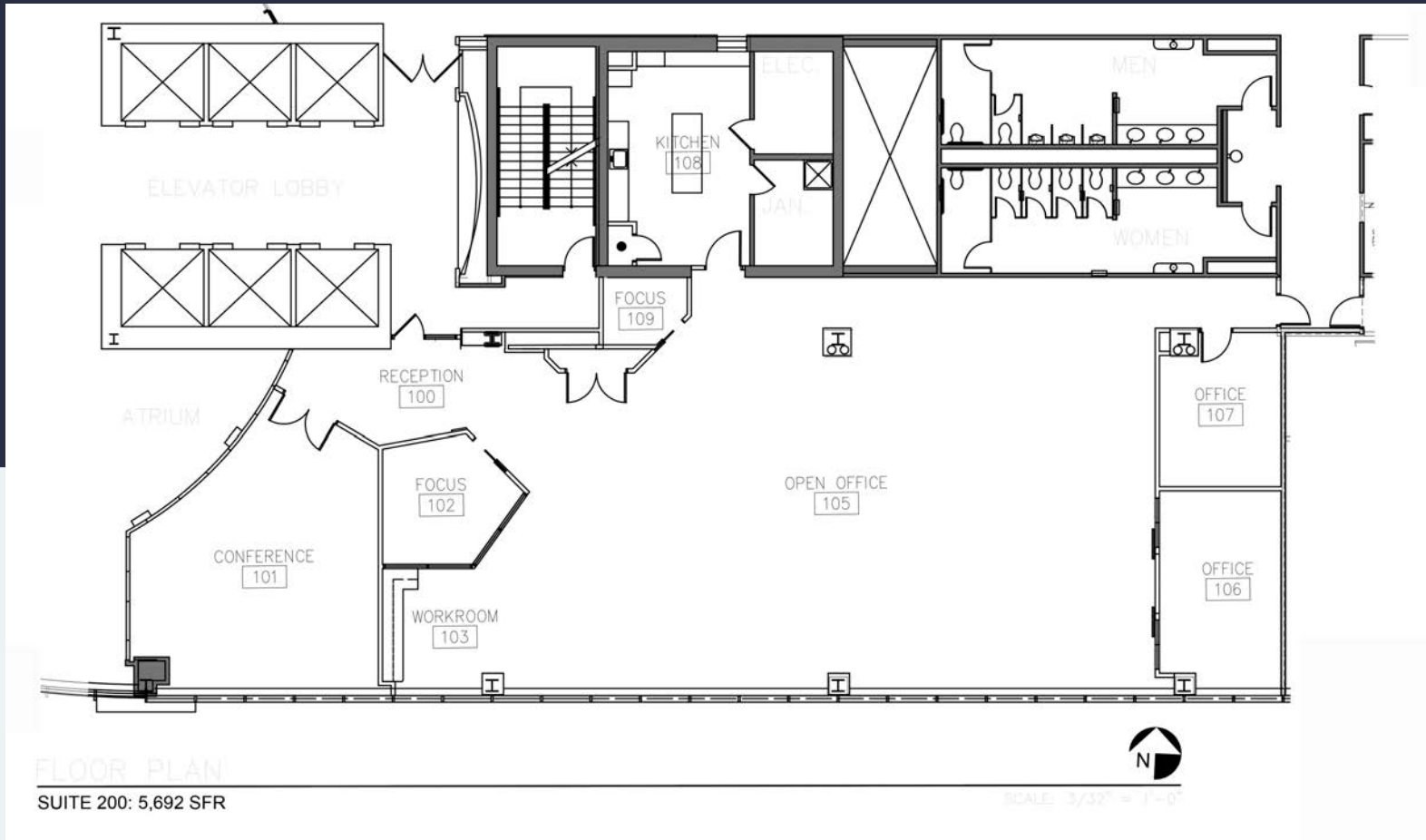


Copy/Work Area

# 6625 W. 78<sup>th</sup> Street, Suite 200

Bloomington, MN 55437

**workspace**  
property trust



## Leasing Information

6625 W. 78<sup>th</sup> Street, Bloomington, MN 55439  
612-426-4033  
[www.workspaceproperty.com](http://www.workspaceproperty.com)

Brad Butler  
Vice President, Regional Director  
[bbutler@workspaceproperty.com](mailto:bbutler@workspaceproperty.com)



# Spaces for the Way Work Happens Today.

These beautifully designed themes inspire creativity and encourage productivity. Whether you are looking for 1,000 square feet or 100,000 square feet, our in-house design & development team can deliver a turnkey office solution.

## Tailored for the Evolution of Office:

- “A La Carte” or “On Demand” Furniture Packages Available
- Plug & Play IT Packages Available



Scan here to learn more about our premium theme selects.



SCANDI



AZURE



TAHOE



BOCA

\*Indicative of the look and feel (not the actual suite)