

Prairie View Office Bldg

7800 Equitable, Suite 150

Eden Prairie, MN 55344

workspace
property trust

6,431 SF Available Now

Asking Rent: \$13.00/NNN
2024 OPEX: \$13.29/RSF



7800 Equitable Dr| Suite 150

Eden Prairie, MN 55344

PROPERTY HIGHLIGHTS

AMENITIES

Located within the southwest suburb of Eden Prairie, this office building has a contemporary feel, excellent glass lines, lower level sitting area, private storage, tempered parking and an exterior south-facing patio.

TRANSPORTATION

Proximate access to Interstate 494 and Highways 212 & 5

TECHNOLOGY

Comcast

SUSTAINABILITY

Energy Star labeled building. Green initiatives in place by tenants and property management to include janitorial and recycling.

Building Owner: Workspace Property Trust

Total Building Size: 43,426 Square Feet

Ceiling Height: Finished 9'-11", Clear 12'-3"

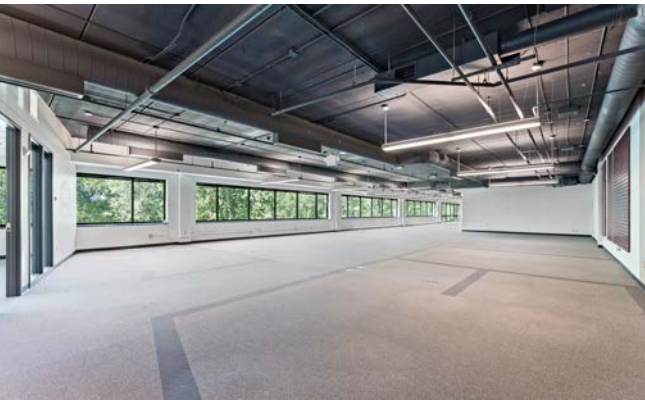
Docks: 1 Dock Door

Parking: 4/1000

8,431 SF Available Now

Office Space





6,431 SF Available Now

Prairie View Office Building

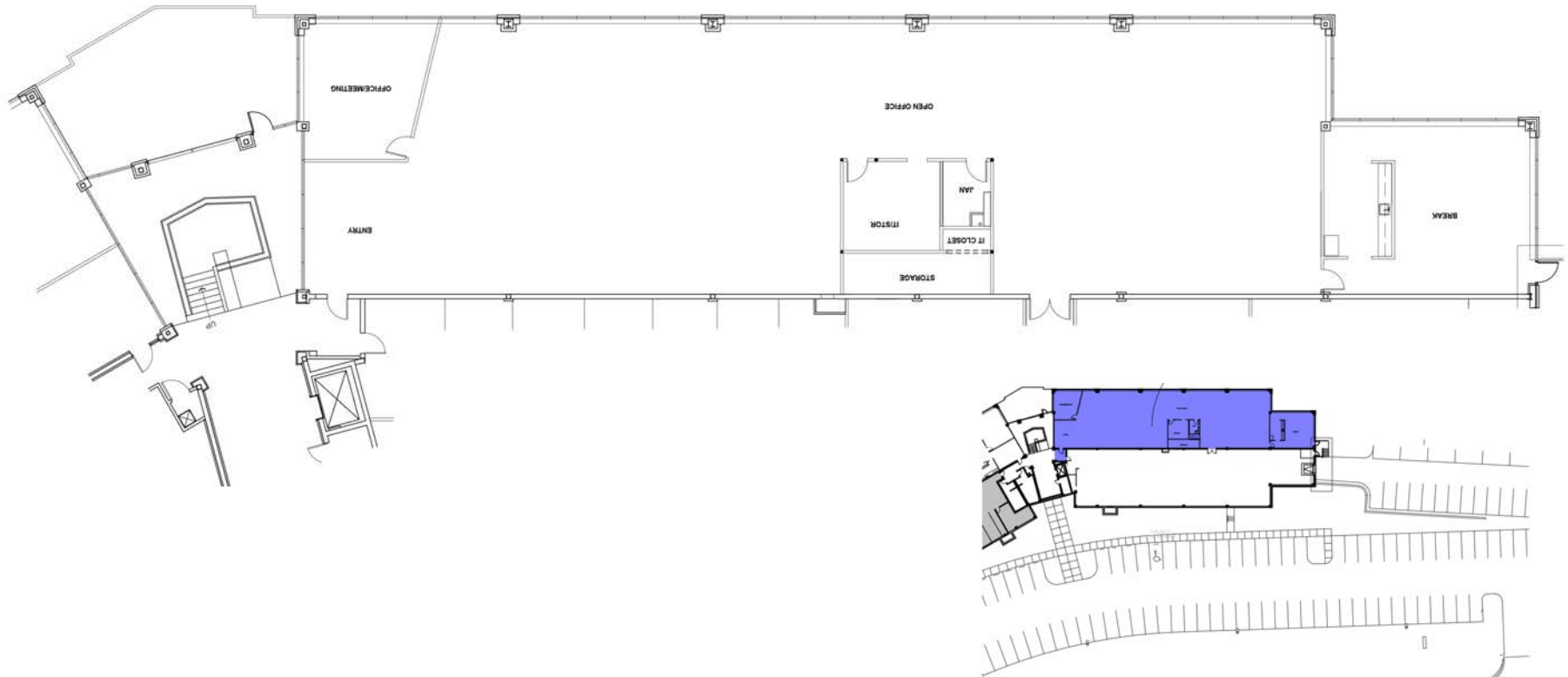
7800 Equitable Drive, Suite 150

7800 Equitable Drl Suite 150

Eden Prairie, MN 55344



6,431 SF Available



Leasing Information

6625 W. 78th Street, Bloomington, MN 55439
(952) 426-4952
www.workspaceproperty.com

Brad Butler
VP, Regional Director
bbutler@workspaceproperty.com



Spaces for the Way Work Happens Today.

These beautifully designed themes inspire creativity and encourage productivity. Whether you are looking for 1,000 square feet or 100,000 square feet, our in-house design & development team can deliver a turnkey office solution.

Tailored for the Evolution of Office:

- “A La Carte” or “On Demand” Furniture Packages Available
- Plug & Play IT Packages Available



Scan here to learn more about our premium theme selects.



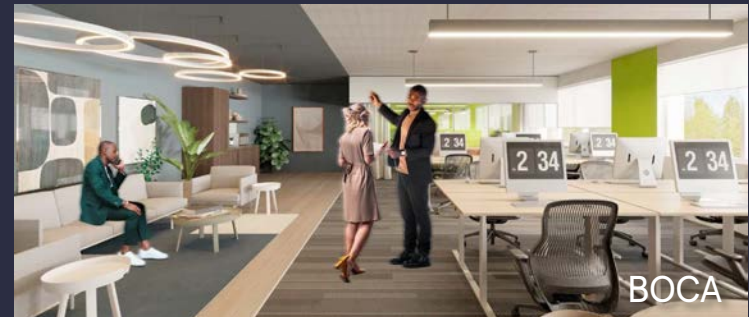
SCANDI



AZURE



TAHOE



BOCA

*Indicative of the look and feel (not the actual suite)