

0012

# Morris Drive

Wayne, PA 19087

workspace  
property trust

Up to 23,432 Available for Lease

Office Space





# 1200 Morris Drive

Wayne, PA 19087

This property comes highly amenitized with a 24/7 state-of-the-art fitness center, showers, outdoor seating, electric car charging, and a micro market for the convenience of quick grab-and-go refreshments.

The trail system around the building will take you to Wilson Farm Park and Valley Forge National Park. Located in the Keystone Innovation Zone, this property includes easy access to Routes 202, 252, 422, 76, and public transportation.

## Property Highlights

**Building Owner:** Workspace Property Trust

**Total Building Size:** 114,071 Square Feet

**Available Space:** Up to 23,432 Square Feet

**Branding:** Building Monument Signage & Great Visibility

Off 1<sup>st</sup> Floor Lobby



## 23,432 SF Available for Lease

Office Space

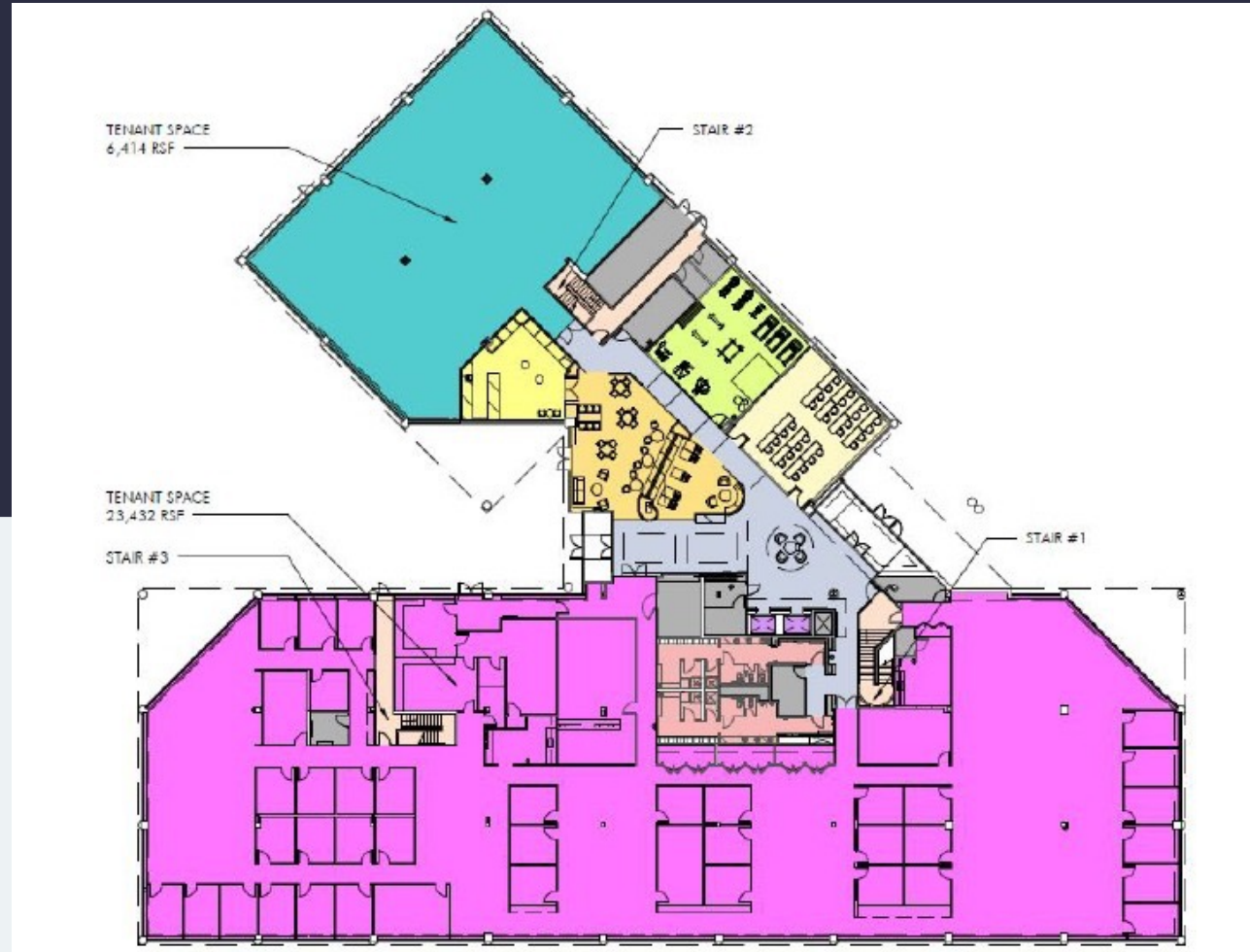
# 1200 Morris Drive

Wayne, PA 19087

**workspace**  
property trust

Up to  
23,432 SF  
Available for Lease

Office Space



## Leasing Information

7 Great Valley Parkway, Suite 190, Malvern, PA, 19355  
(484) 320-3708  
[www.workspaceproperty.com](http://www.workspaceproperty.com)

Doug Himmelreich  
Director of Leasing  
[dhimmelreich@workspaceproperty.com](mailto:dhimmelreich@workspaceproperty.com)



# Spaces for the Way Work Happens Today.

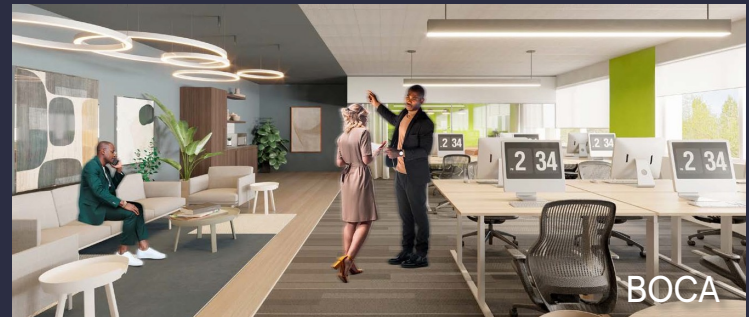
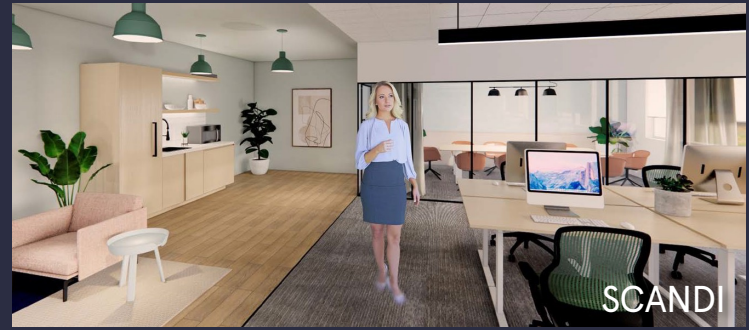
These beautifully designed themes inspire creativity and encourage productivity. Whether you are looking for 1,000 square feet or 100,000 square feet, our in-house design & development team can deliver a turnkey office solution.

## Tailored for the Evolution of Office:

- "A La Carte" or "On Demand" Furniture Packages Available
- Plug & Play IT Packages Available



**Scan here** to learn more about our premium theme selects.



\*Indicative of the look and feel (not the actual suite)