

0  
8  
1

# Sheree Boulevard, Building 1000

workspace  
property trust

Exton, PA 19341

4,811-29,527 SF Available for Lease

Office Space



# 180 Sheree Boulevard, Building 1000

Exton, PA 19341

This property includes amenities such as nearby shopping, restaurants, hotels, daycare facilities and Marsh Creek State Park. It's located in the Keystone Innovation Zone and includes easy access to the PA Turnpike and Routes 100, 113, & 401. Direct access to each suite also provides the opportunity for private outdoor collaboration areas and on-grade loading.

Workspace Property Trust is a privately held, vertically integrated, full-service commercial real estate company specializing in the ownership, management, leasing, and development of Office, and Industrial / R&D / Flex (IRDF) spaces.

## Property Highlights

**Building Owner:** Workspace Property Trust

**Total Building Size:** 31,397 Square Feet

**Available Space:** 4,811-29,527 Square Feet

**Ceiling Height:** 8.5' Throughout

**Features:** Direct Entrances & Individualized HVAC



**4,811-29,527 SF Available for Lease**

Office Space

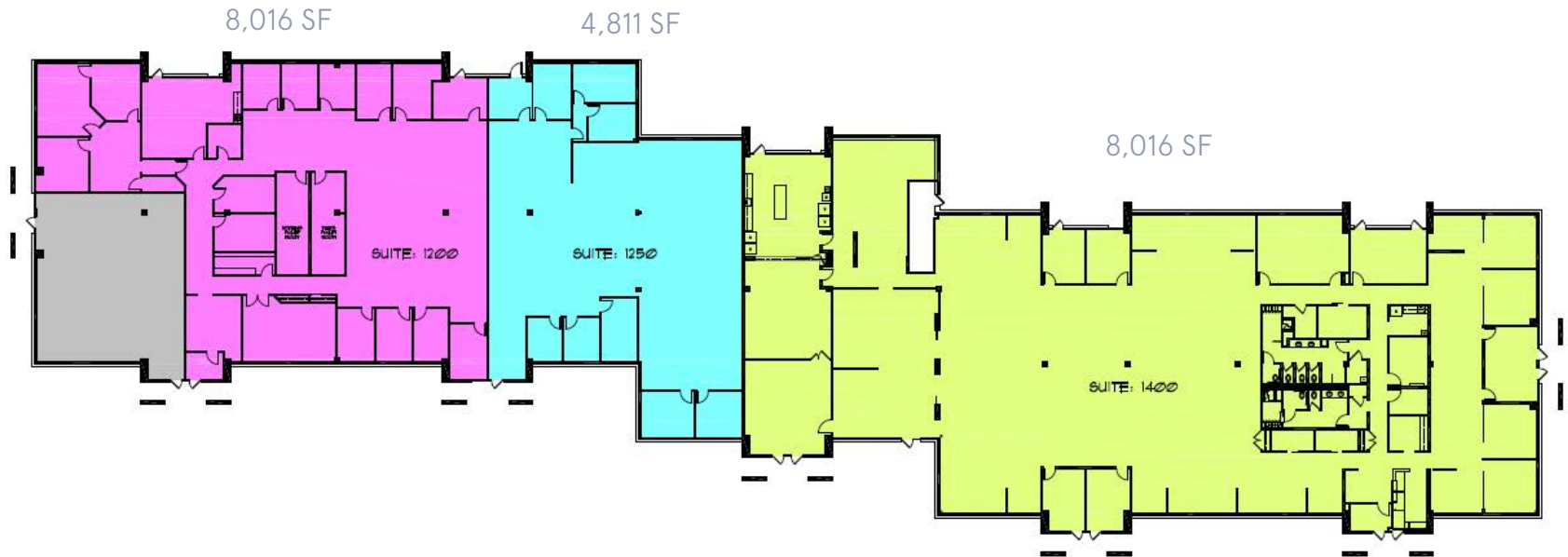
# 180 Sheree Boulevard, Building 1000

Exton, PA 19341



## 4,811-29,527 SF Available for Lease

Office Space



## Leasing Information

7 Great Valley Parkway, Suite 190, Malvern, PA, 19355  
(484) 320-3708  
[www.workspaceproperty.com](http://www.workspaceproperty.com)

Doug Himmelreich  
Director of Leasing  
[dhimmelreich@workspaceproperty.com](mailto:dhimmelreich@workspaceproperty.com)



# Spaces for the Way Work Happens Today.

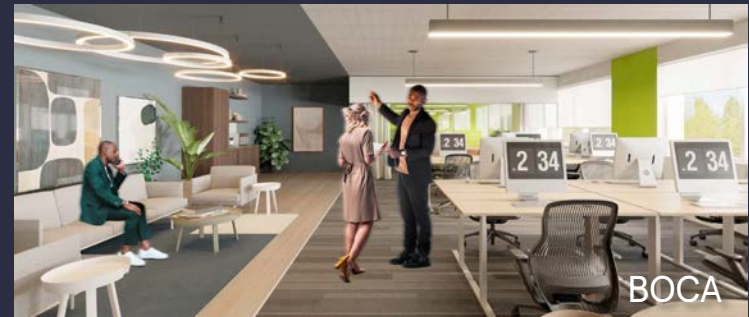
These beautifully designed themes inspire creativity and encourage productivity. Whether you are looking for 1,000 square feet or 100,000 square feet, our in-house design & development team can deliver a turnkey office solution.

## Tailored for the Evolution of Office:

- “A La Carte” or “On Demand” Furniture Packages Available
- Plug & Play IT Packages Available



Scan here to learn more about our premium theme selects.



\*Indicative of the look and feel (not the actual suite)