

420

# Lapp Road

Malvern, PA 19355

**workspace**  
property trust

Up to 36,837 SF Available for Lease

Flex/Tech Space





# 420-500 Lapp Road Suite 420

Malvern, PA 19355

Located within minutes to several restaurants, hotels & conferencing centers, daycare facilities, tennis courts, a sand volleyball court and the Chester Valley Trail. This property sits within the Keystone Innovation Zone and includes easy access to the PA Turnpike, Routes 202, 30, & 401, and public transportation.

## Property Highlights

**Building Owner:** Workspace Property Trust

**Total Building Size:** 91,312 Square Feet

**Available Space:** Up to 36,837 Square Feet

**Clear Height:** 16' Throughout

**Space Condition:** Fully Conditioned, Modern Fit Out

**Loading:** Drive-in & Dock Height Options

**Features:** Direct entrance, and individualized HVAC & electric

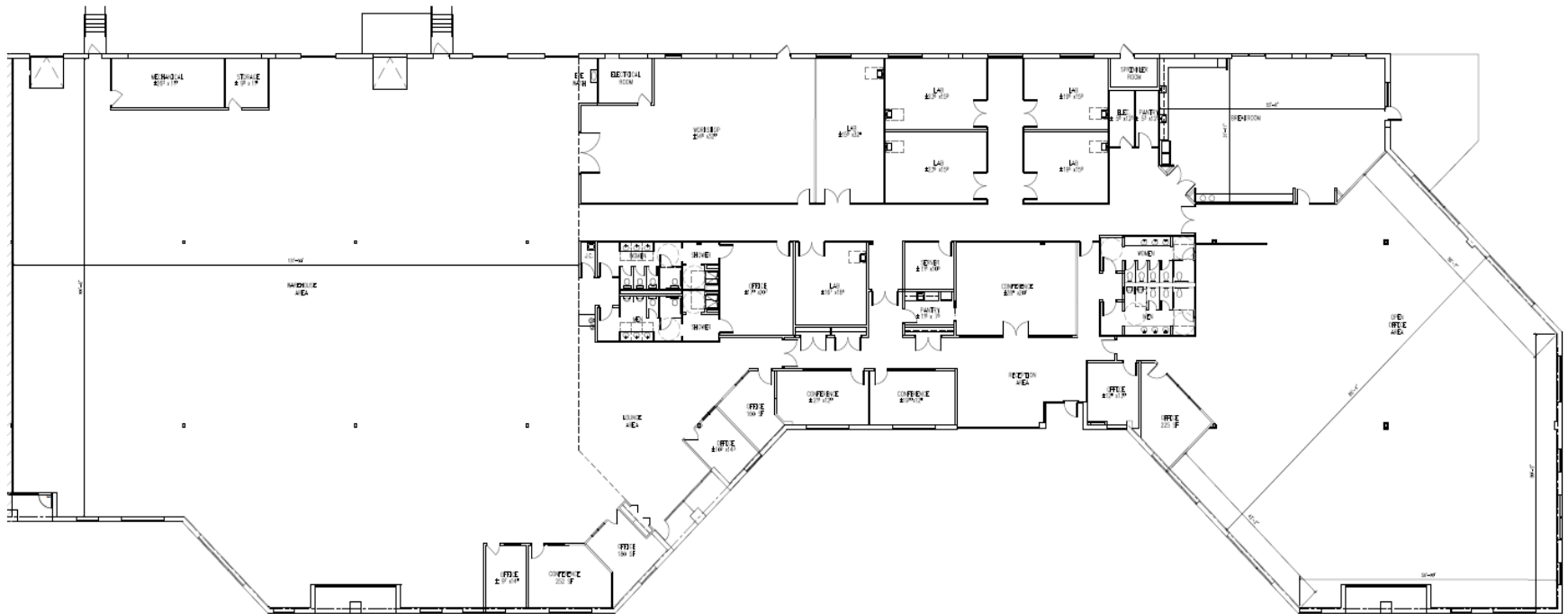


Flex/Tech Space

Malvern, PA 19355

## Up to 36,837 SF Available for Lease

## Flex/Tech Space



7 Great Valley Parkway, Suite 190, Malvern, PA, 19355  
(484) 320-3708  
[www.workspaceproperty.com](http://www.workspaceproperty.com)

Doug Himmelreich  
Director of Leasing  
[dhimmelreich@workspaceproperty.com](mailto:dhimmelreich@workspaceproperty.com)



# Spaces for the Way Work Happens Today.

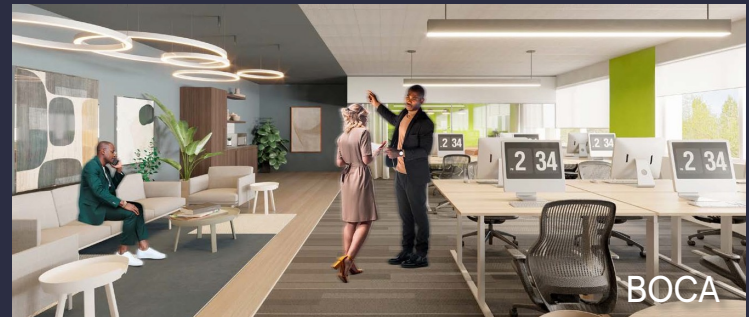
These beautifully designed themes inspire creativity and encourage productivity. Whether you are looking for 1,000 square feet or 100,000 square feet, our in-house design & development team can deliver a turnkey office solution.

## Tailored for the Evolution of Office:

- "A La Carte" or "On Demand" Furniture Packages Available
- Plug & Play IT Packages Available



**Scan here** to learn more about our premium theme selects.



\*Indicative of the look and feel (not the actual suite)