



Valley Stream Parkway

Malvern, PA 19355

62,773 SF Available for Lease

Office Space



65 Valley Stream Parkway

Malvern, PA 19355

Amazing HQ location in the heart of Great Valley. This property is walkable to numerous amenities including The Grove, The Desmond Hotel & Conferencing Center, Penn State Great Valley, the Chester Valley Trail, and several restaurants, hotels, daycare facilities, and the Valley Creek Township Park.

This planned redevelopment includes a complete overhaul of the exterior courtyard with new collaboration areas, branding opportunities, overhead lighting, pavers, and landscaping. The interior common areas and bathrooms will also be renovated to a new, modern aesthetic, including a new monumental stairway in the atrium lobby.

Located in the Keystone Innovation Zone, this property includes easy access to the PA Turnpike, Routes 202, 30, & 401, and public transportation.



Property Highlights

Building Owner: Workspace Property Trust

Total Building Size: 62,773 Square Feet

Branding: Building & Monument Signage Available

Daylighting: Continuous Ribbon Glass Windows

with uninterrupted Views

62,733 SF Available for Lease

Office Space

65 Valley Stream Parkway

Malvern, PA 19355

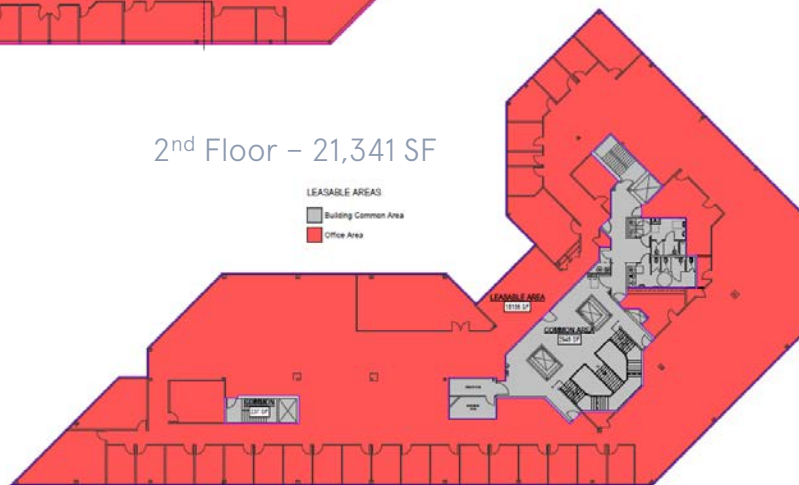
62,773 SF Available for Lease

Office Space

1st Floor – 20,162 SF



2nd Floor – 21,341 SF



3rd Floor – 21,271 SF



Leasing Information

7 Great Valley Parkway, Suite 190, Malvern, PA, 19355
215.802.4061
www.workspaceproperty.com

Doug Himmelreich
Director of Leasing
dhimmelreich@workspaceproperty.com



Spaces for the Way Work Happens Today.

These beautifully designed themes inspire creativity and encourage productivity. Whether you are looking for 1,000 square feet or 100,000 square feet, our in-house design & development team can deliver a turnkey office solution.

Tailored for the Evolution of Office:

- "A La Carte" or "On Demand" Furniture Packages Available
- Plug & Play IT Packages Available



Scan here to learn more about our premium theme selects.



SCANDI



AZURE



TAHOE



BOCA

*Indicative of the look and feel (not the actual suite)