

# 7

## Great Valley Parkway, Suite 295

Malvern, PA 19355

1,985 SF Available for Lease

Office Space





# 7 Great Valley Parkway, Suite 295

Malvern, PA 19355

This building's 3-story glass atrium lobby overlooks an inviting outdoor patio with plenty of seating. Located next door to the shops at Atwater, this building is walkable to many amenities and just a short drive from additional restaurants, hotels, daycare facilities, tennis courts, Valley Creek Township Park, The Grove, Uptown Worthington, and the Chester Valley Trail. A micro market for quick grab-and-go refreshments is available on the first floor.

Located in the Keystone Innovation Zone, this property includes easy access to the PA Turnpike, Routes 202, 30, & 401, and public transportation.

## Property Highlights

**Building Owner:** Workspace Property Trust

**Total Building Size:** 61,108 Square Feet

**Available Space:** 1,985 Square Feet

**Amenities:** Outdoor Patio, Micro Market,  
& Electric Car Charging



1,985 SF Available for Lease

Office Space

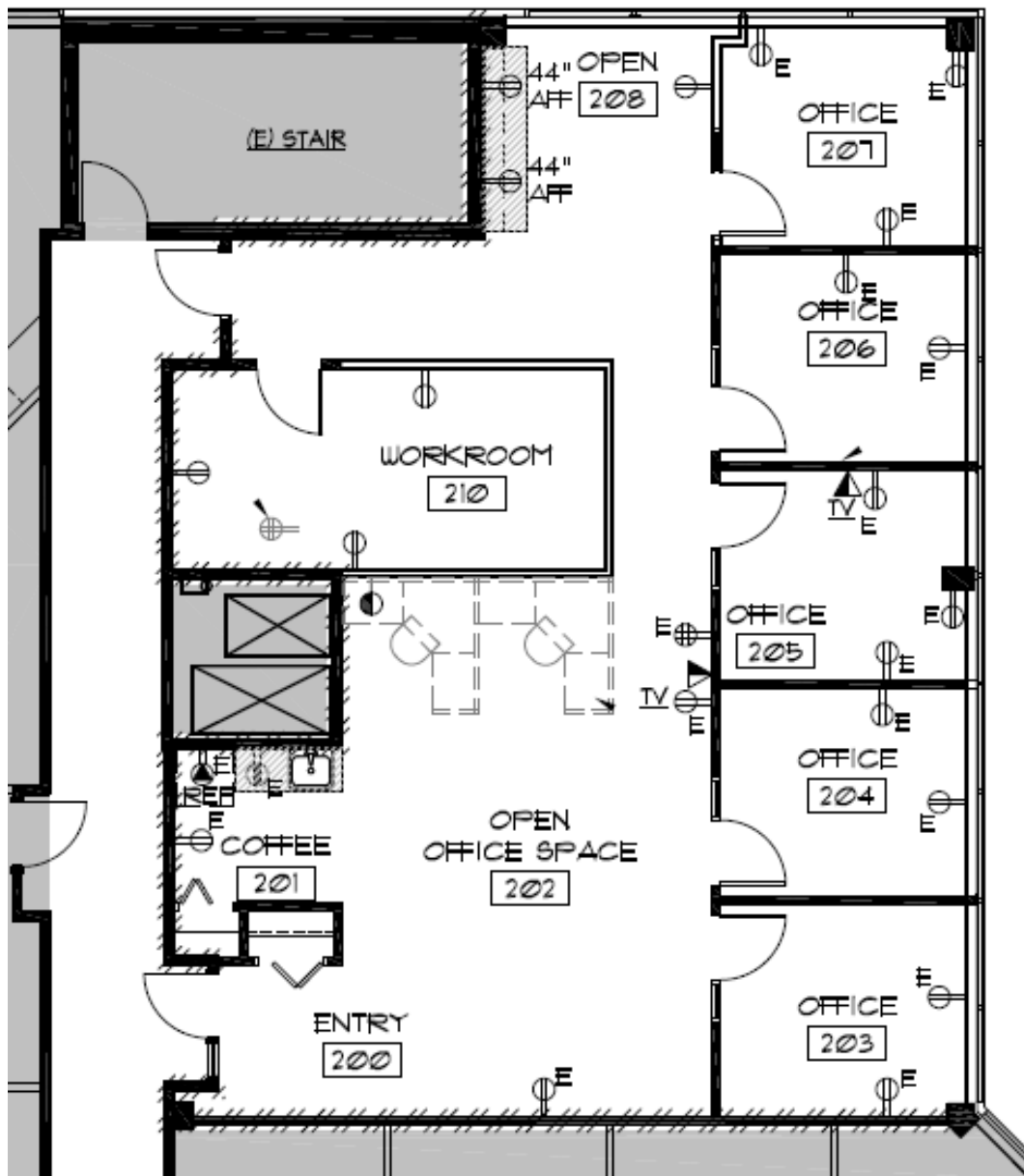
# 7 Great Valley Parkway, Suite 295

Malvern, PA 19355

**workspace**  
property trust

## 1,985 SF Available for Lease

Office Space



## Leasing Information

7 Great Valley Parkway, Suite 190, Malvern, PA, 19355  
215.802.4061  
[www.workspaceproperty.com](http://www.workspaceproperty.com)

Doug Himmelreich  
Director of Leasing  
[dhimmelreich@workspaceproperty.com](mailto:dhimmelreich@workspaceproperty.com)





## Spaces for the Way Work Happens Today.

These beautifully designed themes inspire creativity and encourage productivity. Whether you are looking for 1,000 square feet or 100,000 square feet, our in-house design & development team can deliver a turnkey office solution.

### Tailored for the Evolution of Office:

- "A La Carte" or "On Demand" Furniture Packages Available
- Plug & Play IT Packages Available



Scan here to learn more about our premium theme selects.



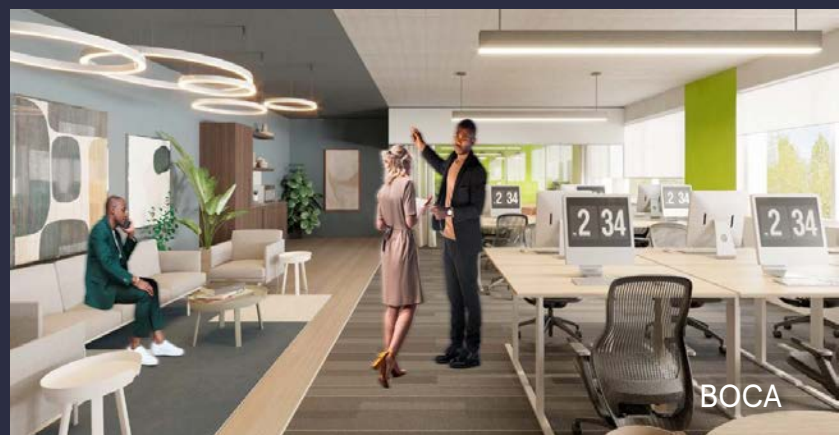
SCANDI



AZURE



TAHOE



BOCA

\*Indicative of the look and feel (not the actual suite)