

# 455 Business Center Dr I Suite 250

Horsham, PA 19044

**workspace**  
property trust

## 6,186 SF Available Now

Office Space



# 455 Business Center I Suite 250

Horsham, Pennsylvania, 19044

## PROPERTY HIGHLIGHTS

### AMENITIES

455 Business Center comes equipped with ample private offices with glass sidelights, an abundance of natural light provide by 3 sides of windows as well as a walkable 2<sup>nd</sup> floor suite off the atrium lobby.

### TRANSPORTATION

Proximate access to 2 PA Turnpike access points, Routes 611 and 309, SEPTA Routes 80 & 310 with multiple stops throughout the Pennsylvania Business Campus.

Horsham Township's h.o.p.s shuttle service is also available to tenants, facilitating transportation between the SEPTA Regional Rail, the Horsham Business Center & the PA Lifestyle Campus.

### TECHNOLOGY

Comcast, Verizon available throughout the PA Business Campus.

**Building Owner:** Workspace Property Trust

**Total Building Size:** 51,505

**Ceiling Height:** 8'6"

**6,186 SF Available Now**

Office Space



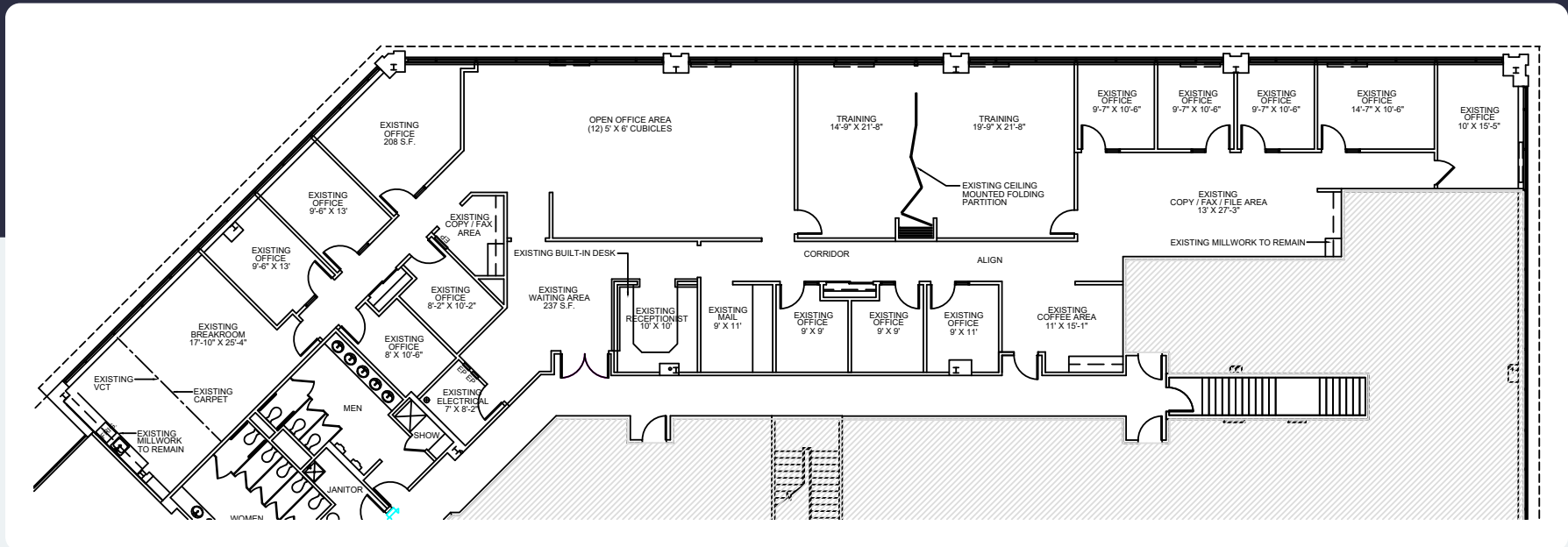
# 455 Business Center I Suite 250

Horsham, Pennsylvania 19044



## 6,186 SF Available for Lease

Office Space



## Leasing Information

700 Dresher Road, Suite 150  
(215) 328-2732  
[www.workspaceproperty.com](http://www.workspaceproperty.com)

Doug Himmelreich  
Director of Leasing  
[D.Himmelreich@workspaceproperty.com](mailto:D.Himmelreich@workspaceproperty.com)



# Spaces for the Way Work Happens Today.

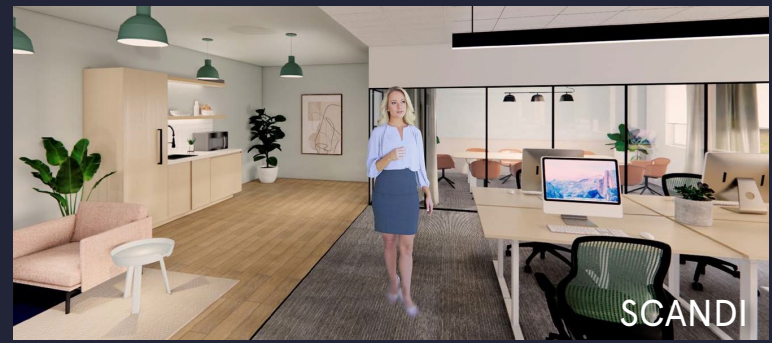
These beautifully designed themes inspire creativity and encourage productivity. Whether you are looking for 1,000 square feet or 100,000 square feet, our in-house design & development team can deliver a turnkey office solution.

## Tailored for the Evolution of Office:

- "A La Carte" or "On Demand" Furniture Packages Available
- Plug & Play IT Packages Available



Scan here to learn more about our premium theme selects.



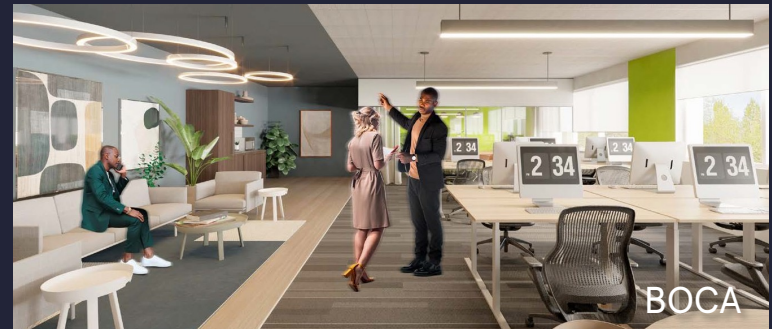
SCANDI



AZURE



TAHOE



BOCA

\*Indicative of the look and feel (not the actual suite)