

# Sunset Plaza

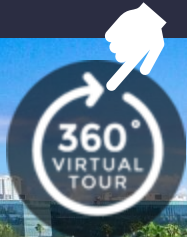
13621 NW 12<sup>th</sup> Street Suite 100

Sunrise, Florida 33323

4,844 SF Available Now

**workspace**  
property trust

Asking Rent: \$21.00/NNN  
2025 OPEX: \$13.94 RSF





# 13621 NW 12<sup>th</sup> Street Suite 100

Sunrise, Florida 33323

## PROPERTY HIGHLIGHTS

### AMENITIES

Three story Class 'A' office building located within the prestigious Sawgrass International Corporate Park. Renovated lobby with tenant locker rooms with showers. Outside tenant lounge with water views and abundant parking ratio of 5/1,000 SF. Access to bicycle and walking trails. Centrally located with close proximity to shopping centers, hotels, restaurants, banks and fitness centers.

### TRANSPORTATION

Easy access to Interstate 75, Sawgrass Expressway and Interstate 595

### TECHNOLOGY

AT&T, Comcast and FPL Fibernet

### SUSTAINABILITY

Certified LEED Silver building. Core & Shell Ongoing LEED initiatives in place.

**Building Owner:** Workspace Property Trust

**Total Building Size:** 106,425 Square Feet



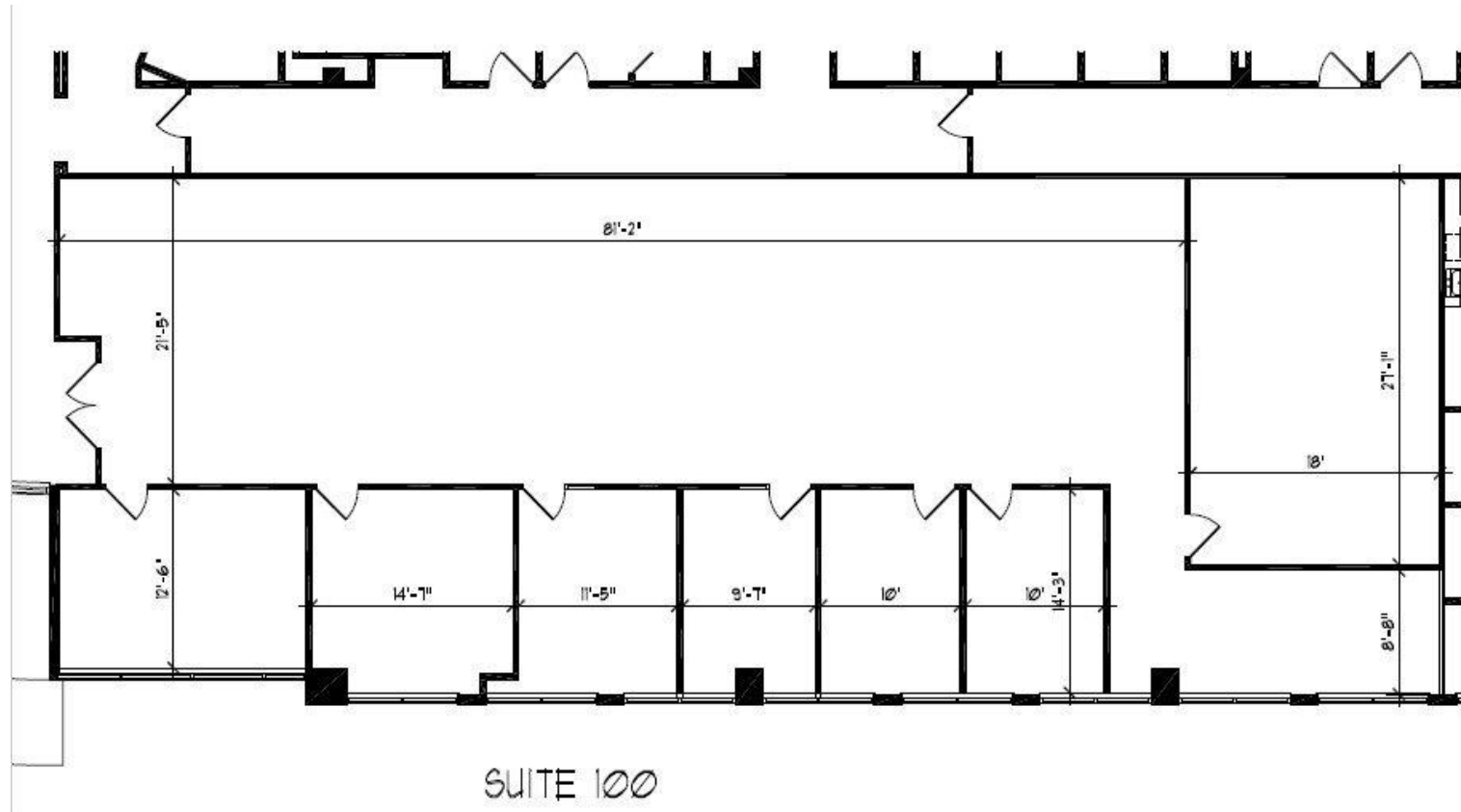
4,844 SF Available Now

# 13621 NW 12<sup>th</sup> Street Suite 100

Sunrise, Florida 33323

**workspace**  
property trust

## 4,844 SF Available Now



## Leasing Information

777 Yamato Road, Suite 105, Boca Raton, FL, 33431  
(954) 391-5503  
[www.workspaceproperty.com](http://www.workspaceproperty.com)

Mike, Nathanson  
Director of Leasing  
[mnathanson@workspaceproperty.com](mailto:mnathanson@workspaceproperty.com)

# Spaces for the Way Work Happens Today.

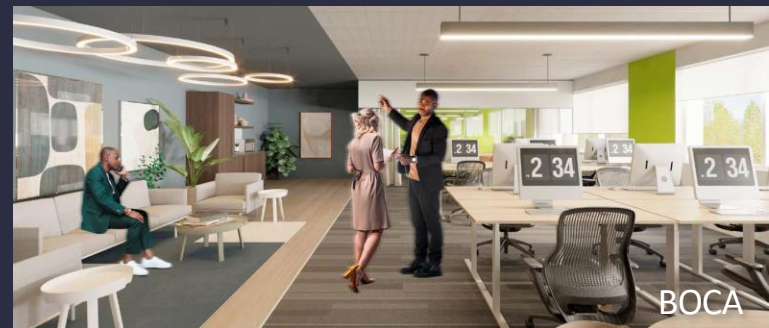
These beautifully designed themes inspire creativity and encourage productivity. Whether you are looking for 1,000 square feet or 100,000 square feet, our in-house design & development team can deliver a turnkey office solution.

## Tailored for the Evolution of Office:

- “A La Carte” or “On Demand” Furniture Packages Available
- Plug & Play IT Packages Available



Scan **here** to learn more  
about our  
premium theme selects.



\*Indicative of the look and feel (not the actual suite)