

Prairie View Office Bldg

7800 Equitable, Suite 100

Eden Prairie, MN 55344

7,436 SF Available Now

workspace
property trust

Asking Rent: Negotiable
2025 OPEX: \$13.49/RSF



7800 Equitable Dr | Suite 100

Eden Prairie, MN 55344

PROPERTY HIGHLIGHTS

AMENITIES

Located within the southwest suburb of Eden Prairie, this office building has a contemporary feel, excellent glass lines, lower level sitting area, private storage, tempered parking and an exterior south-facing patio.

TRANSPORTATION

Proximate access to Interstate 494 and Highways 212 & 5

TECHNOLOGY

Comcast

SUSTAINABILITY

Energy Star labeled building. Green initiatives in place by tenants and property management to include janitorial and recycling.

Building Owner: Workspace Property Trust

Total Building Size: 43,426 Square Feet

Ceiling Height: Finished 8'-7", Clear 8'-11"

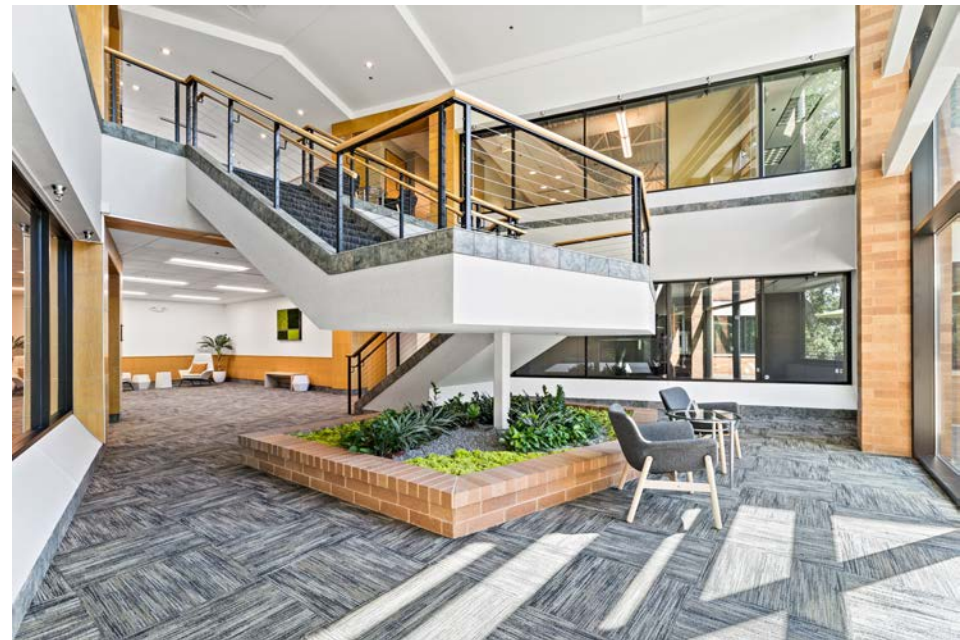
Docks: 1 Dock Door

Parking: 4/1000

7,436 SF Available Now

Office Space





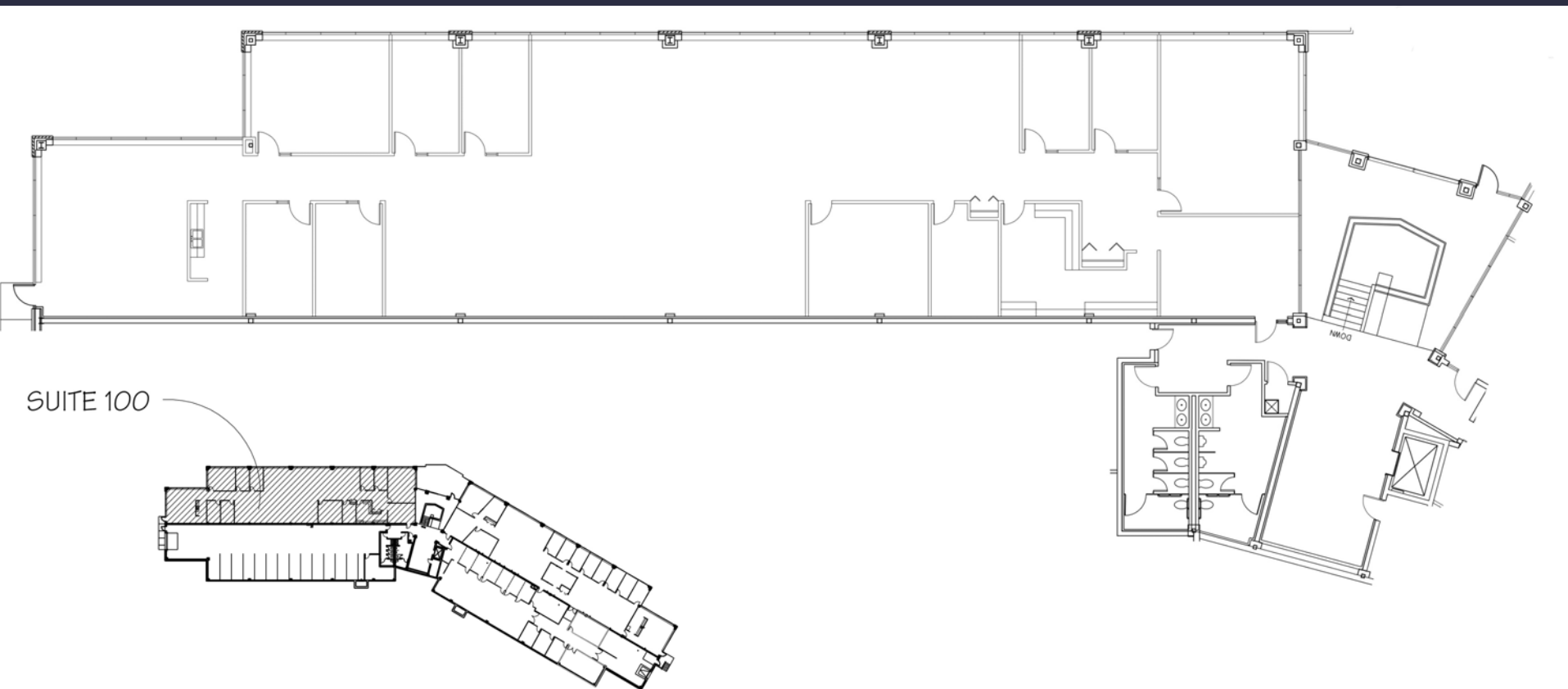
7,436 SF Available Now

7800 Equitable Dr | Suite 100

Eden Prairie, MN 55344

workspace
property trust

7,436 SF Available



Leasing Information

6625 W. 78t Street, Bloomington, MN 55439
(952) 292-4952
www.workspaceproperty.com

Brad Butler
VP, Regional Director
bbutler@workspaceproperty.com



Spaces for the Way Work Happens Today.

These beautifully designed themes inspire creativity and encourage productivity. Whether you are looking for 1,000 square feet or 100,000 square feet, our in-house design & development team can deliver a turnkey office solution.

Tailored for the Evolution of Office:

- "A La Carte" or "On Demand" Furniture Packages Available
- Plug & Play IT Packages Available



Scan here to learn more about our premium theme selects.



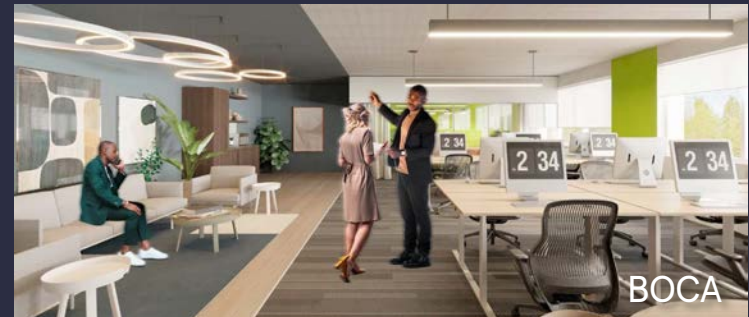
SCANDI



AZURE



TAHOE



BOCA

*Indicative of the look and feel (not the actual suite)