

3110 Cherry Palm Drive Suite 290

Tampa, FL 33619

workspace
property trust

5,861 SF Available Now

Asking Rent: \$14.25 NNN



3110 Cherry Palm Drive Suite 290

Tampa, Florida 33619

PROPERTY HIGHLIGHTS

- Twenty - one Dock Doors all grade level
- Parking Ratio: 4.66/1,000
- 12' Clear Height
- HART stops at Falkenburg Rd and Broadway Ave
- Located in the heart of the I-75 corridor with quick access to US Hwy 301, I-4, and the Selmon Expressway
- Brown Bag Deli on site and several 5-star restaurants near by
- Big box retail, banking and hotels less within 2-mile radius
- 7 daycare facilities within a 10-minute drive
- 25 mins from the Tampa International Airport



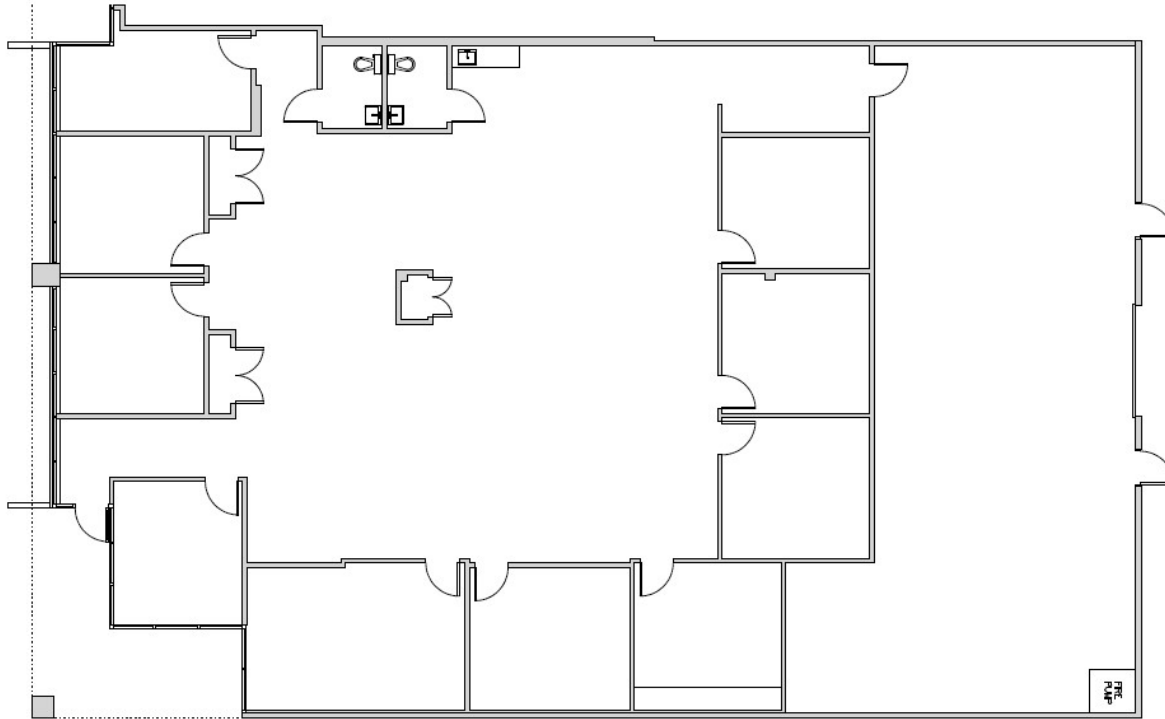
5,861 SF Available Now

3110 Cherry Palm Dr Suite 290

Tampa, Florida 33619



5,861 SF Available Now



Leasing Information

4631 Woodland Corporate Boulevard, Suite 209, Tampa, FL 33614
813-889-3733
www.workspaceproperty.com

Jeffrey, Lanning
Regional Director
jlanning@workspaceproperty.com

Spaces for the Way Work Happens Today.

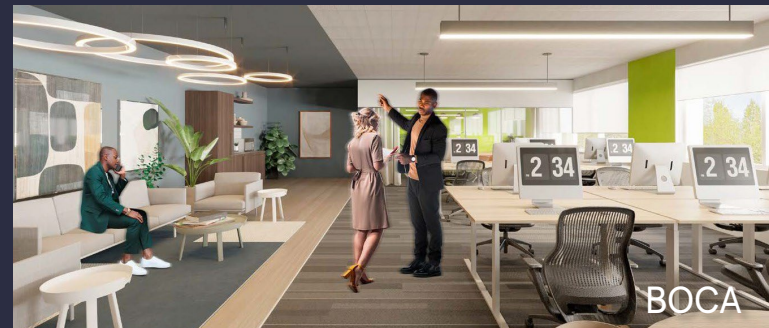
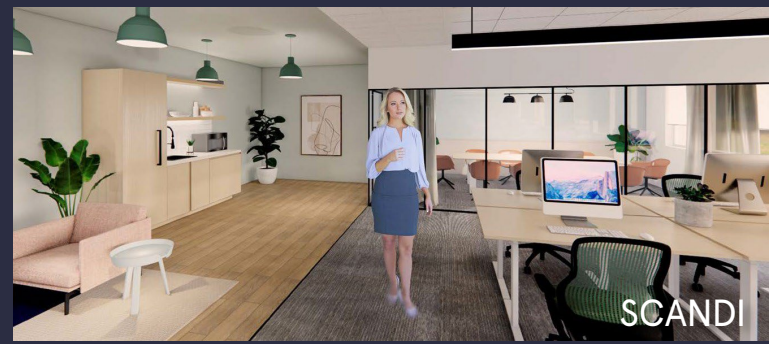
These beautifully designed themes inspire creativity and encourage productivity. Whether you are looking for 1,000 square feet or 100,000 square feet, our in-house design & development team can deliver a turnkey office solution.

Tailored for the Evolution of Office:

- “A La Carte” or “On Demand” Furniture Packages Available
- Plug & Play IT Packages Available



Scan here to learn more about our premium theme selects.



*Indicative of the look and feel (not the actual suite)