



6625 WEST
78TH STREET

Suite 200

Bloomington, MN 55439

workspace
property trust

5,692 SF Available Now

Asking Rent: \$18.00/NNN
2025 OPEX: \$12.93/RSF



ONE LIBERTY CORP. CENTER



6625 WEST
78TH STREET

Suite 160
Bloomington, MN 55439

PROPERTY HIGHLIGHTS

AMENITIES

Property amenities include a full-service cafe, lakeside walking trails, a beautifully appointed lobby with casual meeting areas, a workout room with private showers, EV charging stations and a 50-person Training room.

TRANSPORTATION

Proximate access to Interstate 494 and highways 100 and 169.

TECHNOLOGY

Comcast

SUSTAINABILITY

Energy Star labeled building. Green initiatives in place by tenants and property management to include water conservation, day lighting, janitorial and recycling.

Building Owner: Workspace Property Trust

Total Building Size: 325,000 SF

Ceiling Height: 10' Finished

Parking: 4.1/1000



Atrium

5,692 SF Available Now

Office Space



Fitness Room



Training Room



Café Lounge



Café 38



6625 WEST
78TH STREET

One Liberty Corporate Center

6625 W. 78th Street, Suite 200



6625 WEST
78TH STREET

One Liberty Corporate Center

6625 W. 78th Street, Suite 200

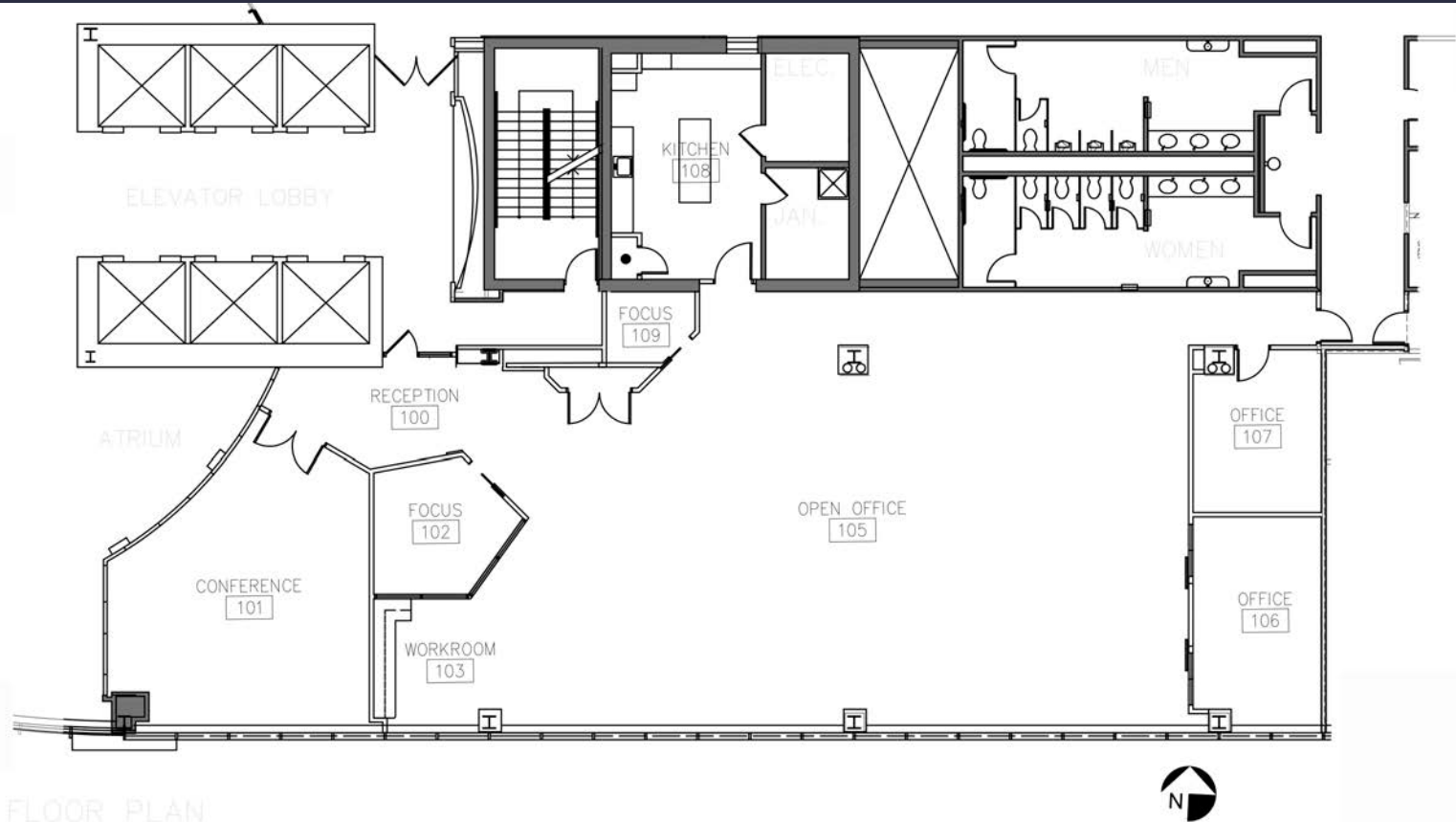


6625 WEST
78TH STREET

Suite 200

Bloomington, MN 55439

workspace
property trust



FLOOR PLAN

SUITE 200: 5,692 SFR

SCALE: 3/32" = 1'-0"

Leasing Information

6625 W. 78th Street, Bloomington, MN 55439
612-426-4033
www.workspaceproperty.com

Brad Butler
Vice President, Regional Director
bbutler@workspaceproperty.com



Spaces for the Way Work Happens Today.

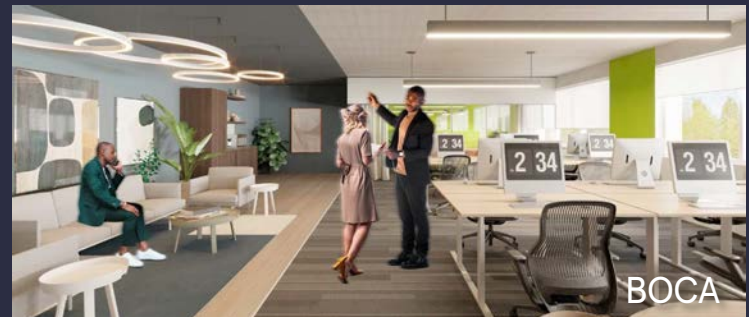
These beautifully designed themes inspire creativity and encourage productivity. Whether you are looking for 1,000 square feet or 100,000 square feet, our in-house design & development team can deliver a turnkey office solution.

Tailored for the Evolution of Office:

- "A La Carte" or "On Demand" Furniture Packages Available
- Plug & Play IT Packages Available



Scan here to learn more about our premium theme selects.



*Indicative of the look and feel (not the actual suite)