



**6625 WEST**  
78TH STREET

**Suites 230 & 250**  
Bloomington, MN 55439

**workspace**  
property trust

9,875 SF Available Now

Asking Rent: \$18.00/NNN  
2025 OPEX: \$12.93/RSF



**ONE LIBERTY CORP. CENTER**





**6625 WEST**  
78TH STREET

**Suites 230 & 250**  
Bloomington, MN 55439

## PROPERTY HIGHLIGHTS

### AMENITIES

Property amenities include a full-service cafe, lakeside walking trails, a beautifully appointed lobby with casual meeting areas, a workout room with private showers, EV charging stations and a 50-person Training room.

### TRANSPORTATION

Proximate access to Interstate 494 and highways 100 and 169.

### TECHNOLOGY

Comcast

### SUSTAINABILITY

Energy Star labeled building. Green initiatives in place by tenants and property management to include water conservation, day lighting, janitorial and recycling.

**Building Owner:** Workspace Property Trust

**Total Building Size:** 325,000 SF

**Ceiling Height:** 10' Finished

**Parking:** 4.1/1000



Atrium

**9,875 SF Available Now**

Office Space





Fitness Room



Training Room



Café Lounge



Café 38



**6625 WEST**  
78TH STREET

**One Liberty Corporate Center**

6625 W. 78<sup>th</sup> Street,  
Suites 230 & 250





Private Offices



Open Office



Open Office



2nd Floor Atrium View



**6625 WEST**  
78TH STREET

**One Liberty Corporate Center**

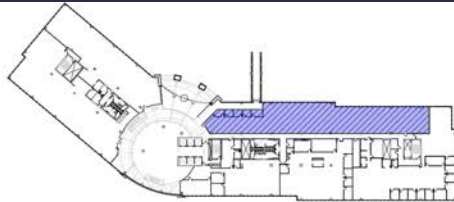
6625 W. 78<sup>th</sup> Street,  
Suites 230 & 250



**6625 WEST**  
**78TH STREET**

**Suites 230 & 250**  
Bloomington, MN 55439

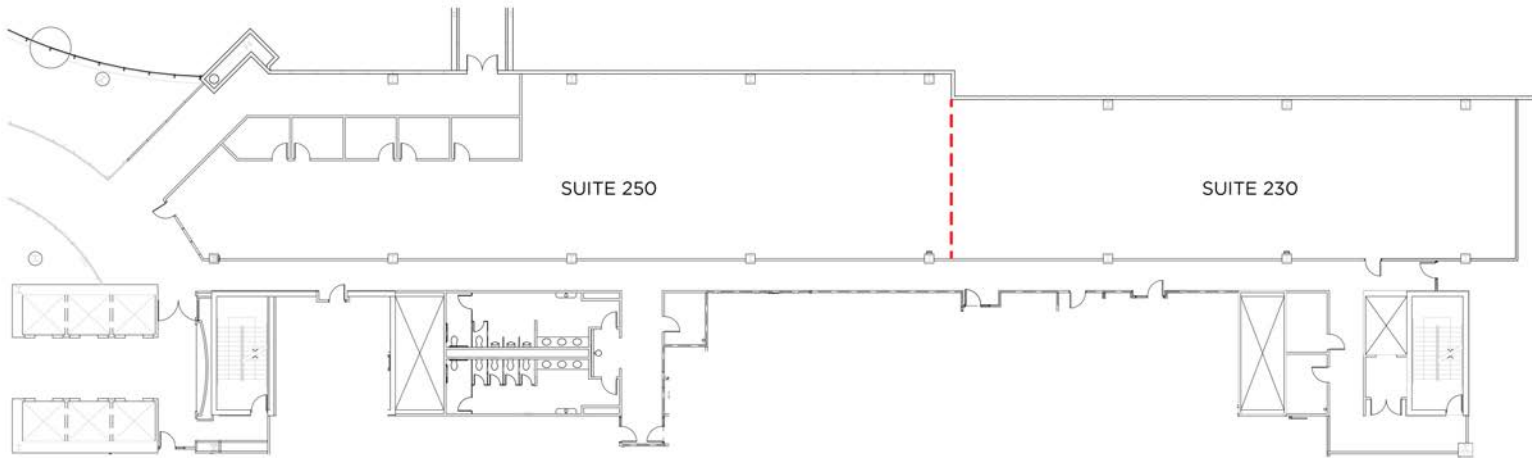
**workspace**  
property trust



**KEY PLAN**



NOT TO SCALE



**FLOOR PLAN**

SUITE 230	4,149 SFR
SUITE 250	5,726 SFR
<b>TOTAL</b>	<b>9,875 SFR</b>



SCALE: 1/32" = 1'-0"

**Leasing Information**

6625 W. 78<sup>th</sup> Street, Bloomington, MN 55439  
612-426-4033  
[www.workspaceproperty.com](http://www.workspaceproperty.com)

Brad Butler  
Vice President, Regional Director  
[bbutler@workspaceproperty.com](mailto:bbutler@workspaceproperty.com)





# Spaces for the Way Work Happens Today.

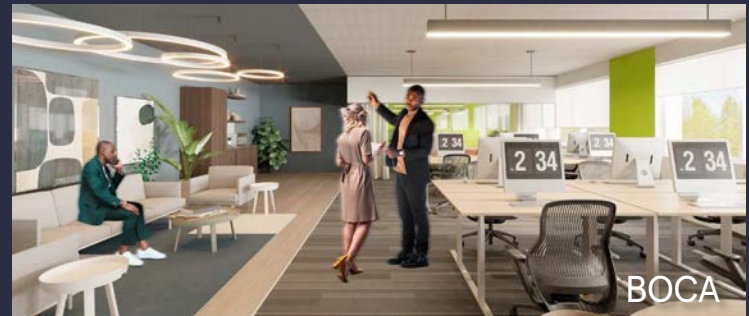
These beautifully designed themes inspire creativity and encourage productivity. Whether you are looking for 1,000 square feet or 100,000 square feet, our in-house design & development team can deliver a turnkey office solution.

## Tailored for the Evolution of Office:

- "A La Carte" or "On Demand" Furniture Packages Available
- Plug & Play IT Packages Available



**Scan here** to learn more about our premium theme selects.



\*Indicative of the look and feel (not the actual suite)