

0041

Liberty Ridge Drive, Suites 60 – 106

Wayne, PA 19087

workspace
property trust

14,509 – 72,351 Available for Lease

Office Space



1400 Liberty Ridge Drive, Suites 60 – 106

Wayne, PA 19087

This property provides gorgeous views of Valley Forge Mountain with generous amounts of outdoor seating. The ground floor hosts the 24/7 access fitness center with free weights, cardio, resistance machines, an exercise room, and spacious locker rooms. Follow the walking path to 1500, 1550 Liberty Ridge Drive, where you'll find a new conferencing center and a micro market for grab-and-go convenience. The trail system around the building will take you to Wilson Farm Park and Valley Forge National Park. Located in the Keystone Innovation Zone, this property includes easy access to Routes 202, 252, 422, 76, and public transportation.

Property Highlights

Building Owner: Workspace Property Trust

Total Building Size: 104,818 Square Feet

Available Space: 14,509 – 72,351 Square Feet

Amenities: 24/7 Fitness Center on Ground Floor,
Conferencing Center and Micro Market Next Door

Space Condition: Plug & Play/Move-in Ready



14,509 – 72,351 SF Available for Lease

Office Space

1400 Liberty Ridge Drive, Suites 60 – 106

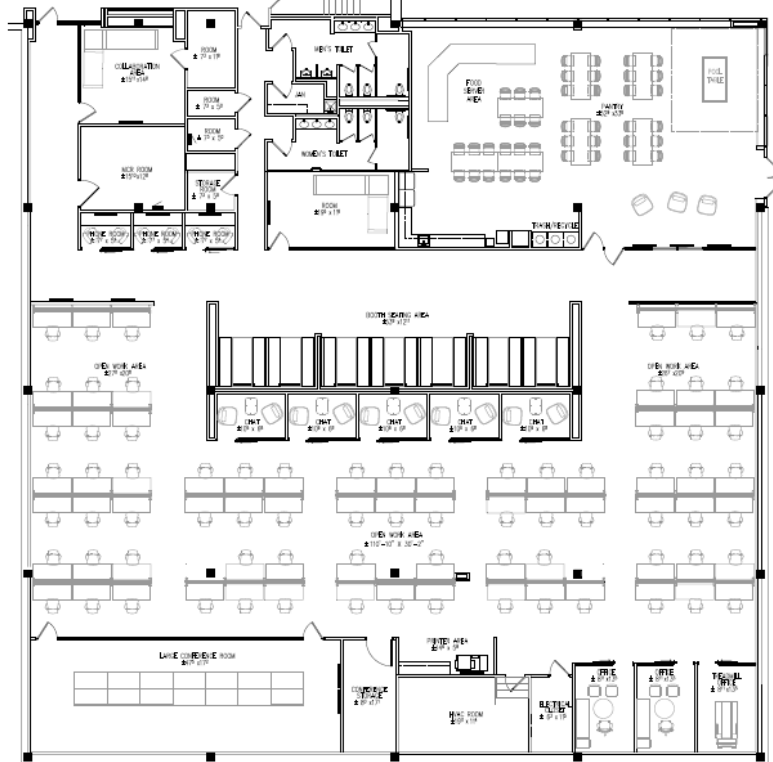
Wayne, PA 19087

workspace
property trust

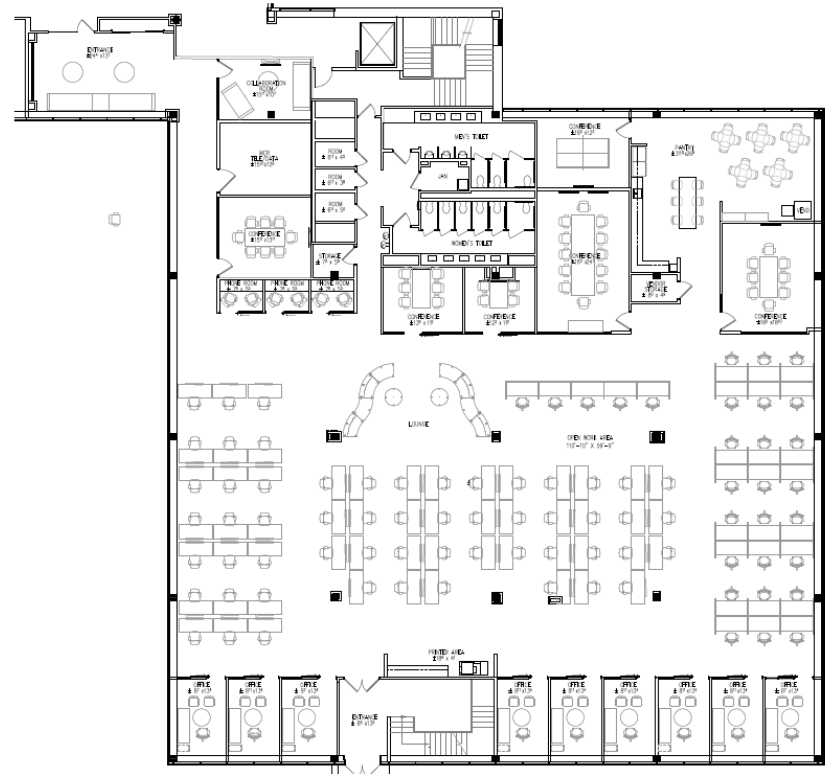
14,509 – 72,351 SF Available for Lease

Office Space

Suite 60 – 14,509 SF



Suite 106 – 16,433 SF



Leasing Information

7 Great Valley Parkway, Suite 190, Malvern, PA, 19355
(484) 320-3708
www.workspaceproperty.com

Doug Himmelreich
Director of Leasing
dhimmelreich@workspaceproperty.com



Spaces for the Way Work Happens Today.

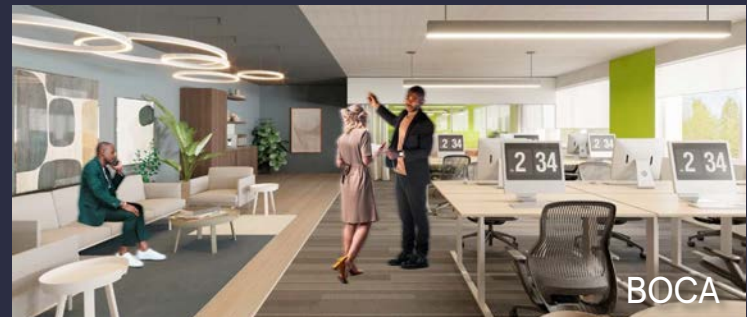
These beautifully designed themes inspire creativity and encourage productivity. Whether you are looking for 1,000 square feet or 100,000 square feet, our in-house design & development team can deliver a turnkey office solution.

Tailored for the Evolution of Office:

- "A La Carte" or "On Demand" Furniture Packages Available
- Plug & Play IT Packages Available



Scan here to learn more about our premium theme selects.



*Indicative of the look and feel (not the actual suite)